

BRISTAN

TAPS & SHOWERS

Installation Instructions & User Guide

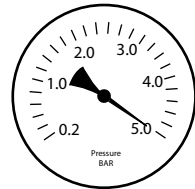
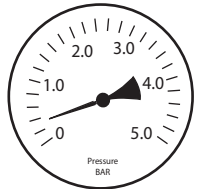
Please leave these instructions
with the end user

Product code: Z2 1/2 C

D6

Specifications

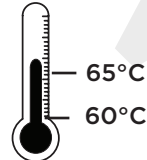
Dynamic Water Pressure
Min: 0.5 bar Max: 5.0 bar



Maximum Static Pressure: 10.0 bar

If the supply pressure is above 3 bar, a pressure reducing valve must be fitted

Maximum Operating Temperature



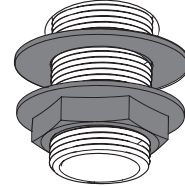
60-65°C
recommended



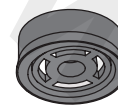
The Flow Valve is timed and
will shut off in 15 ± 5 seconds

*This will vary depending on system pressure

Inlet Connections

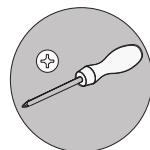


1/2" Male BSP Tap connector

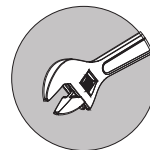


5/Ltr Flow Regulator
Pre-Fitted

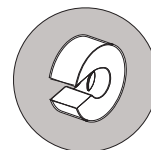
Tools You'll Need



Cross screwdriver



Adjustable spanner



Pipe cutter

Prior to Installation

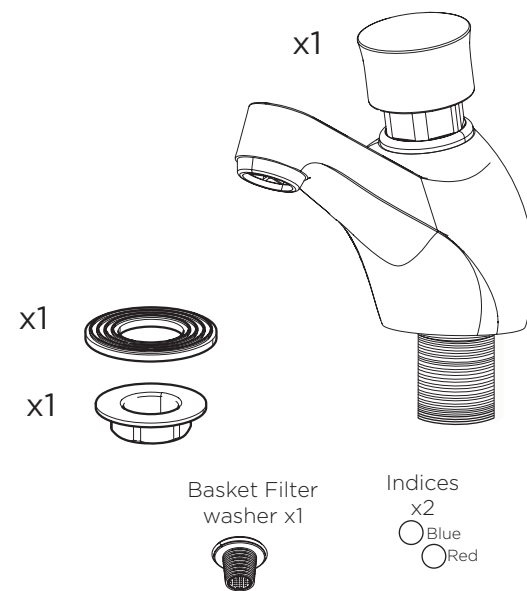
All products manufactured and supplied by Bristan are safe provided they are installed, used correctly and receive regular maintenance in accordance with these instructions.

This product has been tested to the Water Regulations Advisory Scheme (WRAS) and satisfies the requirements of the Water Supply (Water Fittings) Regulations 1999 and current bylaws. For full Installation Requirements & Notes (IRN) please visit wras.co.uk/directory.

We recommend isolation valves to be fitted to the inlet water supplies to ensure ease of future maintenance.

Before installing these taps the water supply must be thoroughly flushed in order to remove any swarf, solder etc. This product must not be modified in any way as this will invalidate the guarantee.

Pack Contents



Spare Parts For Your Tap

To replace any spare parts
for your tap, why not
scan the QR Code or
visit www.bristan.com
and search for your product.



Installation

1

Fit the tap to the
basin.

3

Important
If the supply
pressure is above
3 bar a pressure
reducing valve
must be fitted

Please fit the basket
filter washer into
the tail in the order
shown

5

**Turn
on water
supply for a
few minutes and
check all joints and
connections for
any leaks.**

Turn on
water
supply

2

Secure the taps to the basin by using the
washer and metal backnut below the basin

4

Important
Please ensure
that the correct
colour indice is
fitted

Depending on
chosen hot
or cold water
supply, fit indice
(supplied)

Operation

Push down
to get flow of
water

The tap will shut off up to
15 ± 5 seconds*

Maintenance - Cartridge Cleaning

1

Remove indice and unscrew the retaining screw

Remove handle.

2

Unscrew the valve and pull out the valve from the tap body

3

To gain access to the flow limiter you need to separate the valve.

The top of the valve will need to be pull up, whilst twisting the lower part.

4

When you remove the valve the flow limiter it may be in different positions with the valve

Pull out of this end

Push through the end

5

Rinse the flow limiter and valve body, if necessary wash with warm soapy water

O-rings

Apply grease around the valve body, in particular the 2 o-rings

6

Place flow limiter back in position and secure the valve together.

Replace handle

Important

Prior to doing any maintenance or servicing the isolation valves **must** be turned to the closed/off position.

General Cleaning

Your fitting has a high quality finish and should be treated with care to preserve the visible surfaces.

All surfaces will wear if not cleaned correctly, the only safe way to clean your mixer tap is to wipe with a soft damp cloth. Stains can be removed using washing up liquid. All bath cleaning powders and liquids will damage the surface of your fitting, even the non-scratch cleaners.

Note: Never use abrasive detergents or disinfectants or those containing alcohol, hydrochloric acid or phosphoric acid.

Troubleshooting

Symptom	Cause	Remedy
No flow or low flow rate	Partially closed isolation valve.	Open isolation valve.
	Instantaneous water heater cycles on and off as flow rate or pressure is too low.	Increase water flow rate or pressure through system.
	Head of water is below the minimum distance required.	5 meters minimum required.
	Hot or cold water being drawn off elsewhere causing pressure changes or instantaneous boiler temperature changes.	Do not use other water outlets when using the taps.
	Airlock or partial blockage in the supply pipework.	Flush through pipework to ensure removal of debris and any airlocks.
Water dripping from taps	This is normal for a short time after using the taps.	This is caused by residual water tension, the build up of water in the tap body.
	If water continues to drip, possibly due to the ceramic disc valves	Remove valves and clean, refer to 'Maintenance' section before starting any maintenance.
Taps do not turn on	Closed isolation valve.	Open isolation valve.
	Mains water supply turned off.	Turn on mains water supply.

Maintenance- Flow Straightener

1

Unscrew the flow straightener and soak in descaler.

2

Rinse the flow straightener

3

Replace the flow straightener into spout

Notes

Please use this space for any notes you or your installer may have regarding the installation/plumbing of this product.

At Bristan, we want to make things as easy as possible for our customers. That's why we offer solid guarantees on all our products, effective from the date of purchase, to give you peace of mind.

To start your free **guarantee** simply scan the QR code and register your product. Alternatively visit www.bristan.com/register to register your product via a computer.

For full guarantee terms and conditions visit www.bristan.com/guarantees.