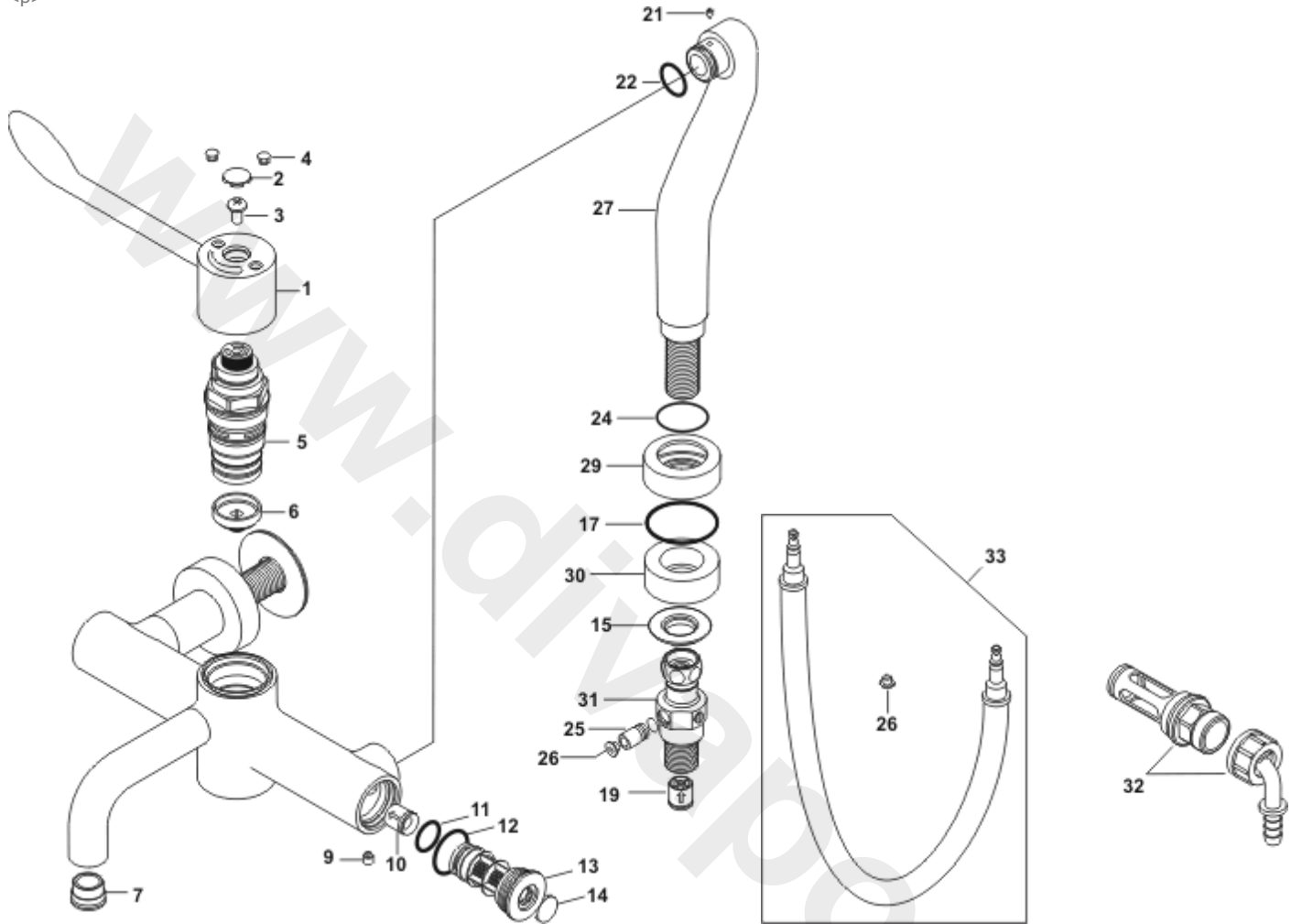


ARMITAGE SHANKS MARKWIK NEW S8249AA SEQUENTIAL THERMOSTATIC MXR LVR - DECK MOUNTED 135mm REACH

<p>



| Ref. | Description  |
|------|--|
| 1    | Lever Handle   |
| 1a   | Handle index kit (includes 2, 3, 4R & 4B)              |
| 2    | Cover cap  |
| 3    | Handle screw   |
| 4R   | Index button red                                       |
| 4B   | Index button blue                                      |
| 5    | Sequential, thermostatic cartridge                     |
| 6    | Cartridge seat insert                                  |
| 7    | Antisplash   |
| 9    | Grub screw M6 x 6                                      |
| 10   | Combined check valve & flow regulator CV15FR           |
| 11   | O-ring dia 17.6 x 2.4                                  |
| 12   | O-ring dia 27.6 x 2.4                                  |
| 13   | End cap, Maint carrier & filter                        |
| 14   | Index button   |
| 15   | Backnut  |
| 16   | Slip washer dia 60 x 25 x 2                            |
| 17   | O-ring 51.6 x 2.4                                      |
| 18   | Wall plate   |
| 19   | Check valve DW15                                       |
| 21   | Grub screw M4 x 6                                      |
| 22   | O-ring dia 19.6 x 2.4                                  |
| 26   | Dust cover   |
| 27   | Deck mounted inlet leg                                 |
| 30   | Spacer   |
| 32   | Purging kit (available separately) - Includes dust cap |
| 33   | Disinfection kit (available separately)                |
| 34   | Unisilikon GB2 grease (available separately)           |

| Part No.    |
|-------------|
| E960668AA   |
| E960615AA   |
| E907042NU11 |
| E918351NU   |
| E907022NU   |
| E907023NU   |
| E960575NU   |
| E960664NU   |
| A924305     |
| E91830067   |
| E910213NU   |
| E912659NU   |
| E912706NU   |
| E950507NU   |
| E960641AA   |
| E960112NU   |
| E960631NU   |
| E960632NU   |
| E960633NU   |
| A952849     |
| E91831067   |
| E912623NU   |
| E909600NU   |
| E960694AA   |
| E911126NU   |
| S8214AA     |
| S8239NU     |
| E960596NU   |

**NB -- colour/finish options**

[www.divapor.com](http://www.divapor.com)