

AFTERCARE INSTRUCTIONS

Your fitting has a high quality finish and should be treated with care to preserve the visible surfaces.

All surface finishes will wear if not cleaned correctly, the only safe way to clean your mixer is to wipe with a soft damp cloth. Stains can be removed using washing up liquid. All bath cleaning powders and liquids will damage the surface of your fitting, even the non-scratch cleaners. **NOTE: Never use abrasive detergents or disinfectants or those containing alcohol, hydrochloric acid or phosphoric acid.**

Bristan recommend E-Cloth for cleaning all of our bathroom & kitchen products. Using just water, E-cloth gives a smear free, deep clean by breaking up and holding dirt, which normal cloths leave behind. Order through your Bristan stockist. (ORDER CODE: ECLOTH)



GUARANTEE

All products are manufactured to the highest standards and a 5 year guarantee covers any defect in manufacture.

NOTE: The 5-year guarantee on the cartridge is invalidated if damaged by any waterborne debris.

All products must have access for servicing or replacement during the life of the product.

In the interests of continuous product development we reserve the right to alter specification as necessary

PRODUCT CODE:

PRODUCT IDENTIFICATION CODE LASER ETCHED ON PRODUCT
Installer please fill in code here _____.(Where applicable)

TELEPHONE HELPLINE: 0844 701 6273

Bristan Group Limited
Birch Coppice Business Park
Dordon
Tamworth
Staffordshire
B78 1SG
UK
A Masco Company
Website: www.bristan.com
Telephone: +44 (0) 844 701 6274
Facsimile: +44 (0) 844 701 6275
Email: enquire@bristan.com

BRISTAN

Prism Eco Click Basin Mixer



Fitting Instructions & Contents List

Before starting any installation project please consider:

Prior to drilling into walls, check there are no hidden electrical wires, cables or water supply pipes with the aid of an electronic detector. If you use power tools do not forget:

- Wear eye protection
- Unplug equipment after use



Please keep these instructions for future reference and request of replacement part

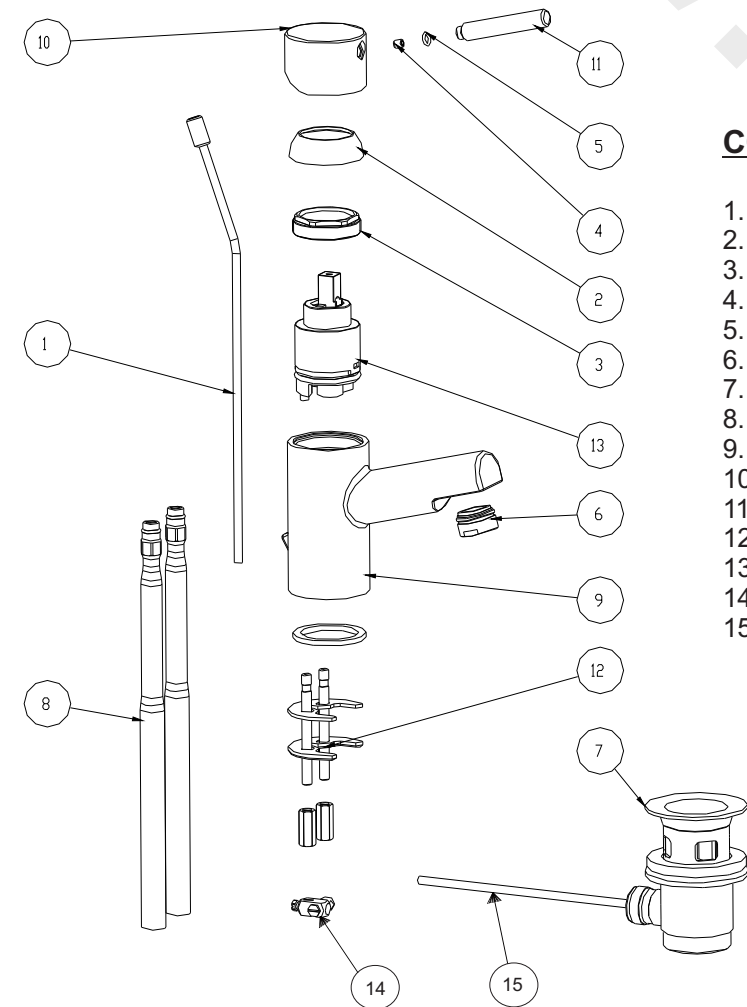
WATER PRESSURE

This tap is suitable for use at all supply pressures.

If the tap is installed at low pressure (tank fed), then the minimum distance from the highest installed position of the shower head to the underside of the cold tank should be at least 2 metres to ensure adequate shower performance.

Operating Pressures: Min 0.2 bar, Max 7.0 bar.

This mixer tap should be installed in compliance with the Water Regulations. Where the supplies are unbalanced, i.e. hot water from cylinder tank / cold from the mains, approved check valves must be fitted in the supply pipes. For further details contact your Local Water Authority.



CONTENTS

1. Operating Rod
2. Shroud
3. Retaining Nut
4. Grub Screw
5. Small Washer
6. Anti Splash
7. Waste Plug
8. Copper Tails
9. Mixer Body
10. Head
11. Lever
12. 'C' Plate Fixing Kit
13. Cartridge
14. Rod Connector
15. Waste Rod

ADDITIONAL SAFETY FEATURE

This mixer tap incorporates a facility to limit/reduce the maximum hot water from the tap.

Simply remove the handle lever (11) grub screw (4) and lever handle (10). A small plastic collar (temperature limiting ring) can be seen between the cartridge retaining nut (3) and the control shaft. Carefully prise the plastic collar upwards using a small screwdriver or similar tool. By replacing in a slightly different position by either rotating either to the left or the right, this can limit the lever movement (when replaced towards the hot or the cold side, thus allowing the maximum hot temperature to be altered as required).

INSTALLATION

1. Identify all components and check for completeness, particularly before commencing installation.
2. Fit the mixer body to the sink using the 'C' plate fixing kit (12). The 'C' shaped rubber washer and metal washers go on the underside of the sink to be secured by the threaded rod and retainer.
3. Fit the copper pipes (8) to the mixer (**BY HAND ONLY**) and (**DO NOT OVERTIGHTEN**) then connect the hot and cold supplies.
4. Fit the pop-up waste, with the flat washer below and the shaped washer above the basin. It is recommended that a silicon sealant be applied to both sealing faces of the washers. The plug height can be set by adjusting the waste rod (15) operating rod (1), rod connector (14) and screw in the base of the plug. Friction for the waste mechanism can be adjusted using the waste cap, which is attached to the bottom waste. (**DO NOT OVERTIGHTEN**)
5. Turn on the water supplies. Lift the handle both ways for a few minutes letting the water flow to check all joints and connections for leaks.
6. See over the page for aftercare instructions.

ECO CLICK

An innovative water saving feature that offers a subtle resistance as it reaches, approximately half of its full flow capability. For increased flow this feature can be overridden. At full flow the click cartridge uses 32% less water than a standard cartridge and when in eco click mode the reduction increases to 72%.



MAINTENANCE AND/OR CARTRIDGE REPLACEMENTS

If the fitting begins to drip:-

1. Turn off both water supplies.
2. Unscrew lever (11) and grub screw (4), then remove head (10).
3. Unscrew shroud (2) and retaining nut (3), then remove cartridge (13).
4. Clean seating and grease rubber washer.
5. Replace cartridge (13), shroud (2) and retaining nut (3).
6. Replace head (10), grub screw (4) and lever (11), then turn on water supplies.
7. Contact our helpline, if problem persists.