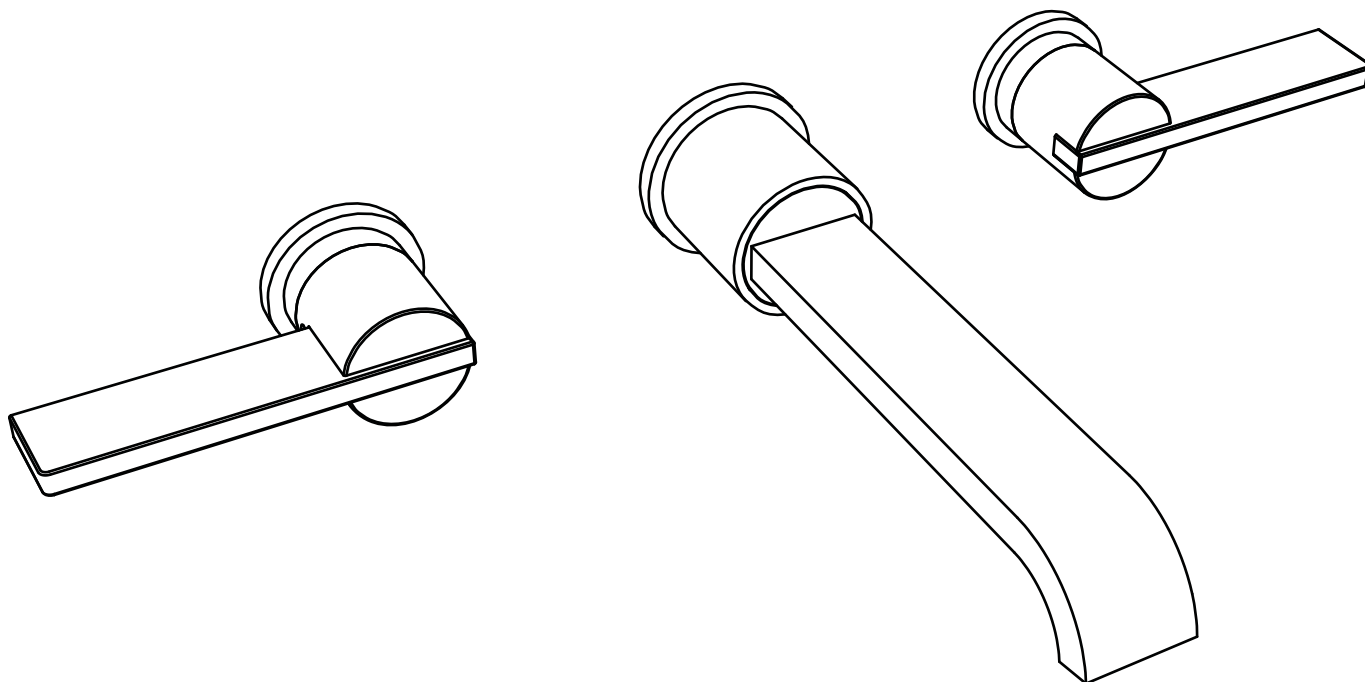


matki | S H O W E R I N G

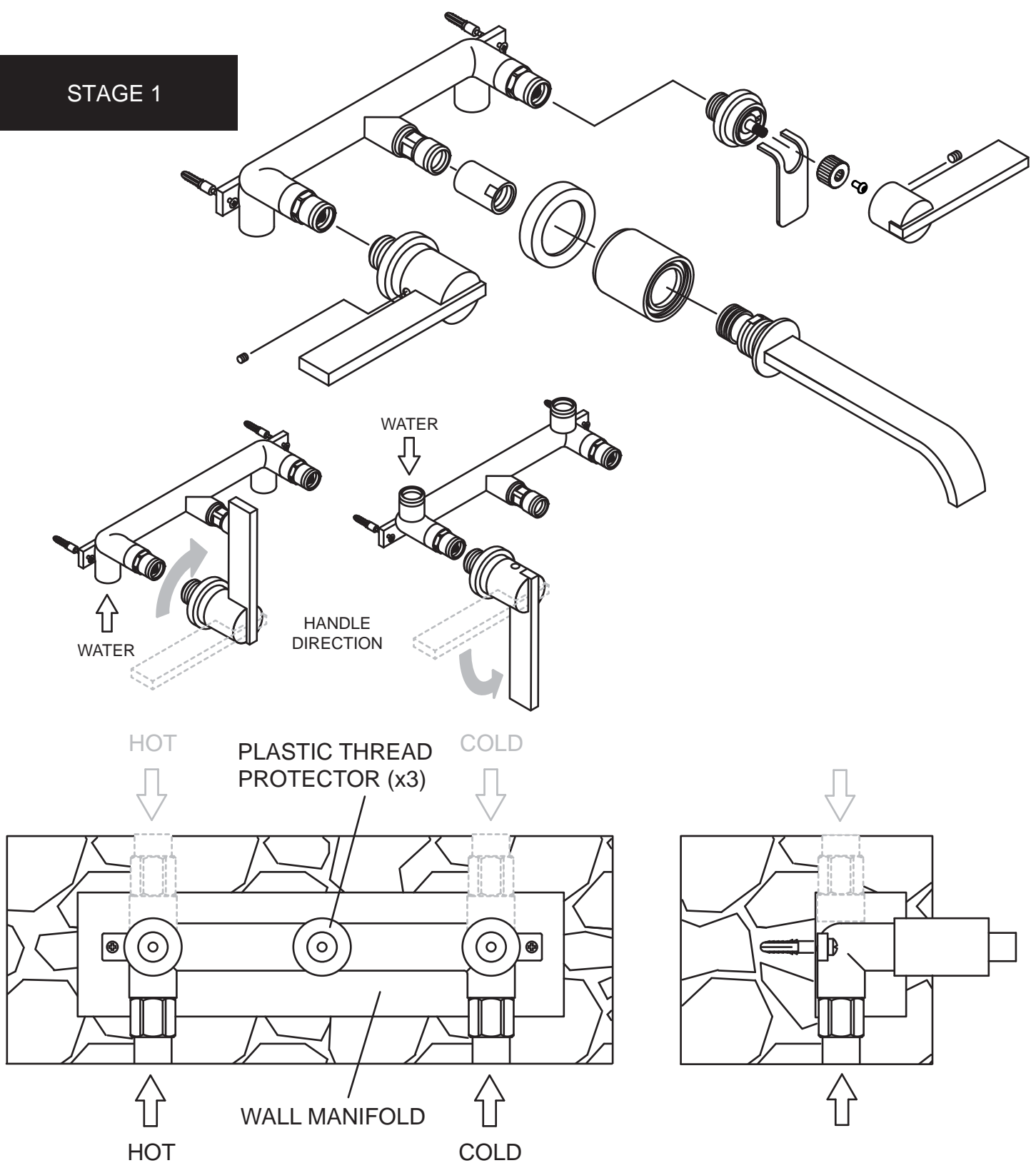
ELIXIR BASIN/BATH FILLER - BLADE DESIGN EXW20 - 150/185mm

INSTALLATION



MATKI PLC, CHURCHWARD ROAD, YATE, BRISTOL, BS37 5PL
TELEPHONE:01454 322 888 FAX:01454 315 284 EMAIL:techsupport@matki.co.uk

STAGE 1



This stage illustrates the assembly of tap and spout body.

Recess the wall manifold into the wall, please ensure the manifold is mounted level and straight. The white covers on the tap and spout bosses protect the screw threads during installation. Remove for testing and replace until tiling is complete.

The **Hot** and **Cold** manifold inlets are ½" BSP Female parallel threaded connections.

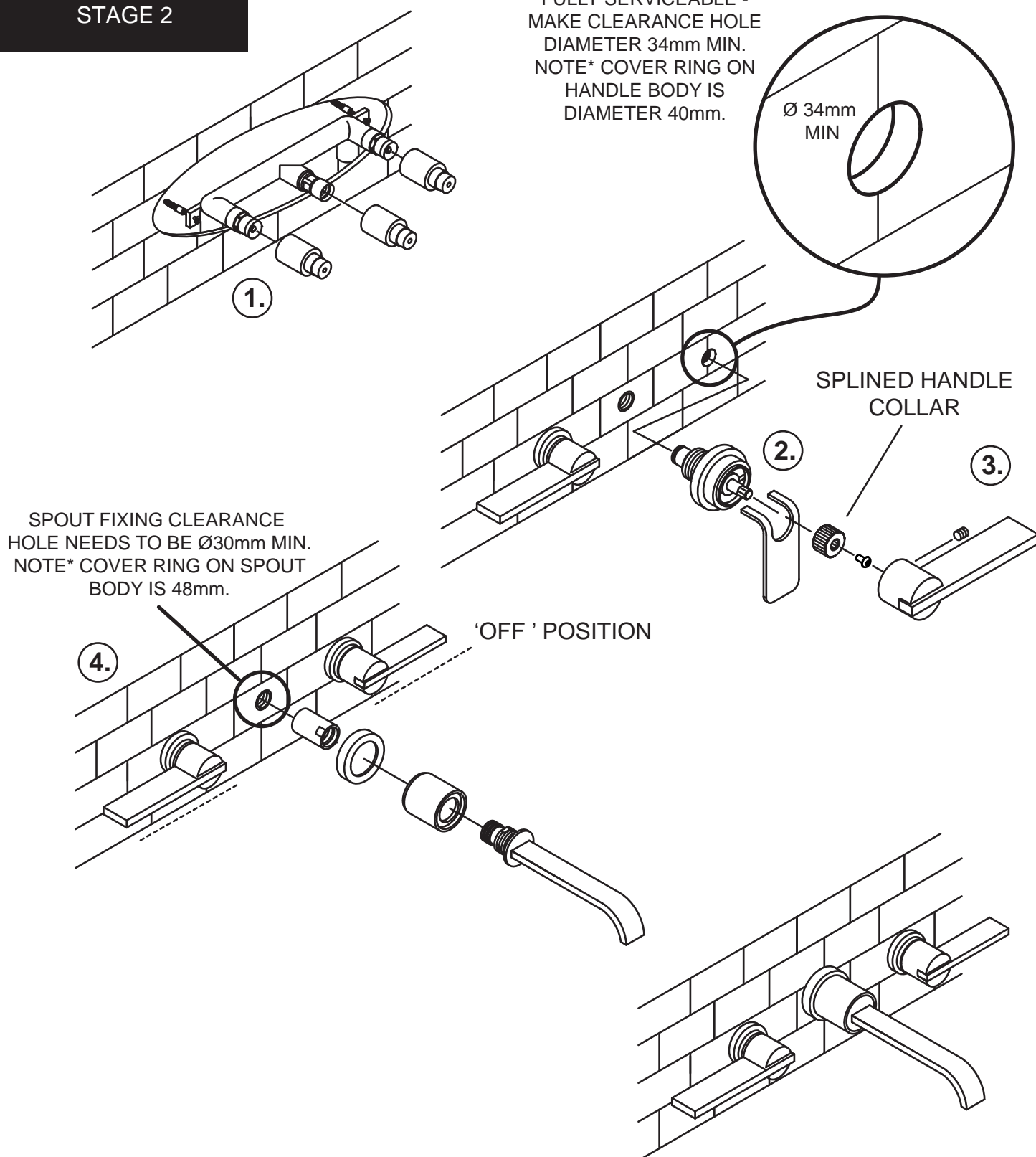
Important, do not use tapered threaded adaptors when connecting to the **Hot & Cold** inlets.

Threaded joint connections should be made with PTFE tape. Do not use Oil based non setting jointing compounds. Please fit isolation valves to the **Hot** and **Cold** supplies as close as possible to the inlet connections.

Plumb **Hot** on the **Left**, **Cold** on the **Right**. Temporarily test the joints for leakage by fitting the Handles and Spout.

STAGE 2

TO ENSURE CARTRIDGE IS FULLY SERVICEABLE - MAKE CLEARANCE HOLE DIAMETER 34mm MIN. NOTE* COVER RING ON HANDLE BODY IS DIAMETER 40mm.



This stage illustrates the final-fit of the tap handles and spout.

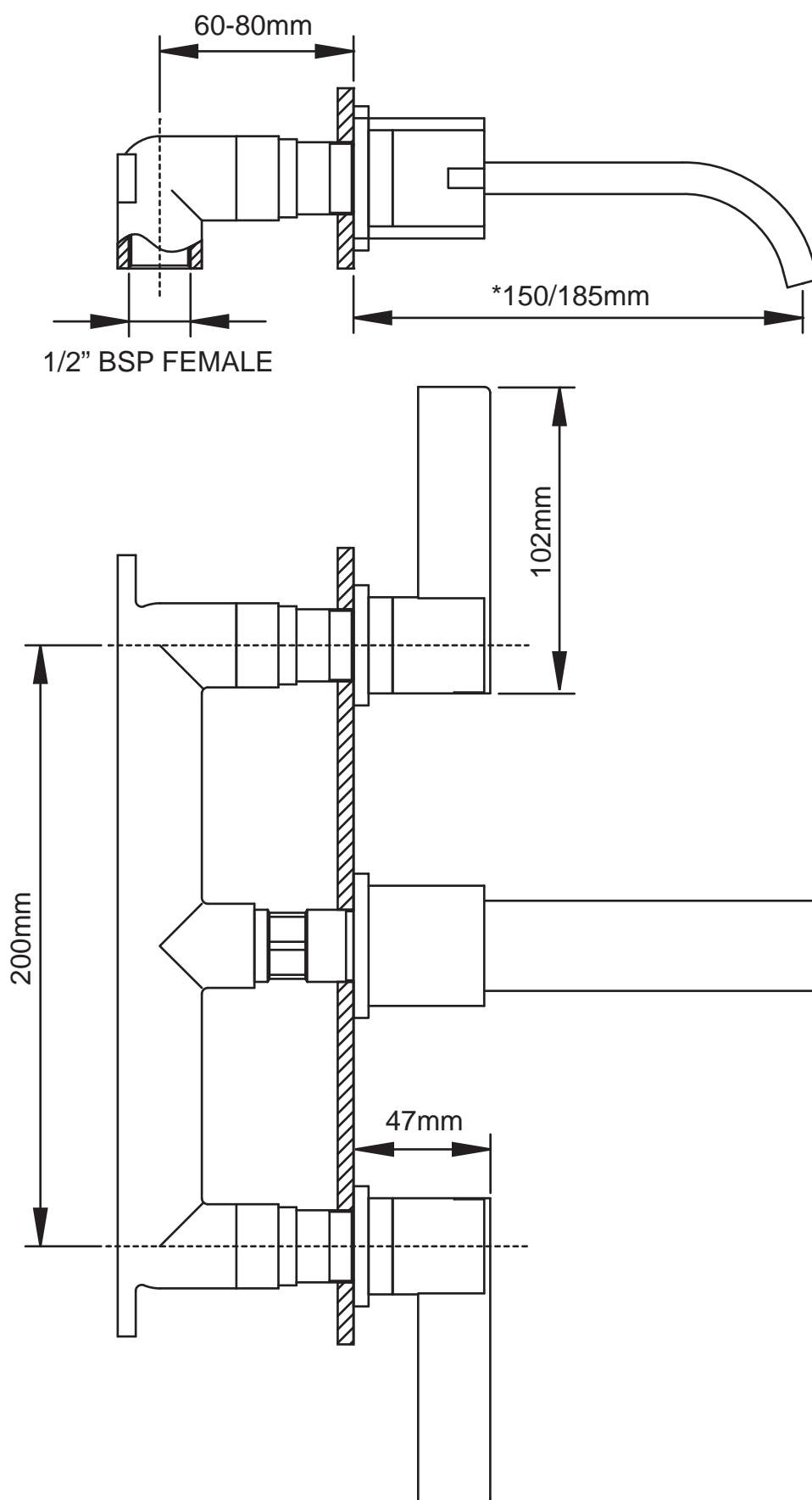
Remove the 3x plastic thread protectors from the wall manifold (1).

Screw the handle bodies on - use the tool provided to fully tighten the handle body to the wall (2).

Attach each handle to the handle body ensuring a 1/4 turn, on/off movement is achieved - and that 'Off' is in the horizontal position. The Handle can be adjusted at this point to ensure a horizontal 'Off' position is achieved - re-adjust the Splined Handle Collar if necessary. Tighten the grub screw with the allen key provided (3).

Screw-fit the spout to the spout outlet in the manifold and fully tighten to the wall (4).

DIMENSIONS



*Depending on model.
Dimensions are approximate. All Dimensions are in mm.