

AFTERCARE INSTRUCTIONS

Your fitting has a high quality finish and should be treated with care to preserve the visible surfaces.

All surface finishes will wear if not cleaned correctly, the only safe way to clean your tap is to wipe with a soft damp cloth. Stains can be removed using washing up liquid. All bath cleaning powders and liquids will damage the surface of your fitting even the non-scratch cleaners.

GUARANTEE

All products are manufactured to the highest standards and a 5 year guarantee covers any defect in manufacture.

NOTE: - the 5 year guarantee on the valves is invalidated if damaged by any waterborne debris.

In the interests of continuous product development we reserve the right to alter specification as necessary

PRODUCT CODE: D 3HBAS C CD

TELEPHONE HELP LINE! 01827 311345

Bristan Limited
Lagrange
Lichfield Road Industrial Estate
Tamworth
Staffordshire
B79 7XD
UK

Web Site: www.bristan.com
Telephone: 01827 68525
Facsimile: 01827 68553

(FI D 3HBAS)

BRISTAN

Art Deco 3 Hole Basin Mixer

Fitting Instructions & Contents List

Please keep these instructions for future reference

WATER PRESSURE

This mixer is suitable for use at all supply pressures. However for optimum use both the hot and cold supplies should be reasonably balanced. If the fitting is installed at low pressure (tank fed), then the minimum distance from the outlet of the nozzle to the underside of the cold tank should be 2 metres to ensure adequate performance.

This mixer should be installed in compliance with Water Regulations. Where the supplies are unbalanced, i.e. hot water from the cylinder tank / cold from the mains, approved check valves must be fitted in the supply pipes. For further details contact your Local Water Authority.

INSTALLATION

1. Identify all the components and check for completeness, particularly before arranging installation.
2. Fit the spout (1) and side bodies (2) to the basin using the nuts (3), washers (4&5) and cover flanges (6).
3. Connect the centre tee (12) to the side bodies, using the flexible hoses supplied (looping hoses to fit, if necessary, as shown in the diagram).
4. Fit the valves (7) and cover with shrouds (8), Fit handles (9) and secure with handle screws (10) then finish with indices (11).
5. Place the waste operating rod (13) through the spout and fit the pop up waste, with washer (16) below and washer (17) above the basin. It is recommended that a silicon sealant be applied to both sealing faces of washers 16 and 17. The plug height can be set by, adjusting the waste rod (15) and operating rod (13) connecting bracket (14), and the screw (18) in the base of the plug.
6. Connect hot and cold supplies and fully open both valves, letting them run for a few minutes to check all joints and connections for leaks.
7. See over the page for aftercare instructions.

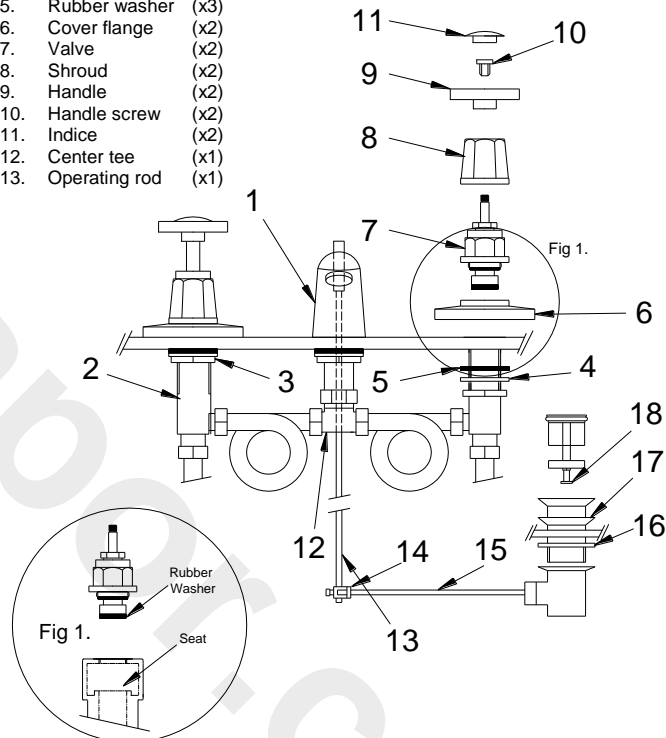
MAINTENANCE

If the fitting begins to drip:

1. Turn off the water supply.
2. Remove indices (11), unscrew handle screw (10) and remove handle (9).
3. Unscrew shroud (8) and remove valve (7).
4. Carefully clean seating and rubber washer (fig 1).
5. Replace valve, shroud and handle then turn on the water supply.
6. Contact our helpline if problem persists.

CONTENTS

- | | | | | | |
|-----|---------------|------|-----|--------------------|------|
| 1. | Spout | (x1) | 14. | Connecting bracket | (x1) |
| 2. | Side body | (x2) | 15. | Waste rod | (x1) |
| 3. | Nut | (x3) | 16. | Washer | (x1) |
| 4. | Metal washer | (x3) | 17. | Washer | (x1) |
| 5. | Rubber washer | (x3) | | | |
| 6. | Cover flange | (x2) | | | |
| 7. | Valve | (x2) | | | |
| 8. | Shroud | (x2) | | | |
| 9. | Handle | (x2) | | | |
| 10. | Handle screw | (x2) | | | |
| 11. | Indices | (x2) | | | |
| 12. | Center tee | (x1) | | | |
| 13. | Operating rod | (x1) | | | |



Please Note: -

In the unlikely event you find a part missing please contact our Customer Service Help line on 01827 311345 for immediate despatch of part.