

## **AFTERCARE INSTRUCTIONS**

Your fitting has a high quality finish and should be treated with care to preserve the visible surfaces.

All surface finishes will wear if not cleaned correctly, the only safe way to clean your mixer is to wipe with a soft damp cloth. Stains can be removed using washing up liquid. All bath cleaning powders and liquids will damage the surface of your fitting, even the non-scratch cleaners.

## **GUARANTEE**

All products are manufactured to the highest standards and a 5 year guarantee covers any defect in manufacture.

As gold and special effect finishes are softer than chromium plate, Special care must be taken when cleaning, a 3 year guarantee covers these finishes.

**NOTE: The 5-year guarantee on the cartridge is invalidated if damaged by any waterborne debris.**

In the interests of continuous product development we reserve the right to alter specification as necessary

**PRODUCT CODE: CL 2HBAS C / CL 2HBAS CB**

**PRODUCT IDENTIFICATION CODE LASER ETCHED ON PRODUCT**

Installer please fill in code here \_\_\_\_\_.

TELEPHONE HELPLINE! +44 (0)844 701 6273

Bristan Group Limited  
Birch Coppice Business Park  
Dordon  
Tamworth  
Staffordshire  
B78 1SG  
UK  
A Masco Company  
Website: [www.bristan.com](http://www.bristan.com)  
Telephone: +44 (0) 844 701 6274  
Facsimile: +44 (0) 844 701 6275  
Email: [enquire@bristan.com](mailto:enquire@bristan.com)

# BRISTAN

## **Chill 2 Hole Basin Mixer**



## **Fitting Instructions & Contents List**

**Please keep these instructions for future reference and request of replacement part**

## WATER PRESSURE

This mixer is suitable for use at all supply pressures. However for optimum use both the hot and cold supplies should be reasonably balanced.

If the fitting is installed at low pressure (tank fed), then the minimum distance from the outlet of the nozzle to the underside of the cold tank should be approximately 3.0 metres to ensure adequate performance.

This mixer should be installed in compliance with Water Regulations. Where the supplies are unbalanced, i.e. hot water from the cylinder tank / cold from the mains, approved check valves must be fitted in the supply pipes.

For further details contact your Local Water Authority.

## INSTALLATION

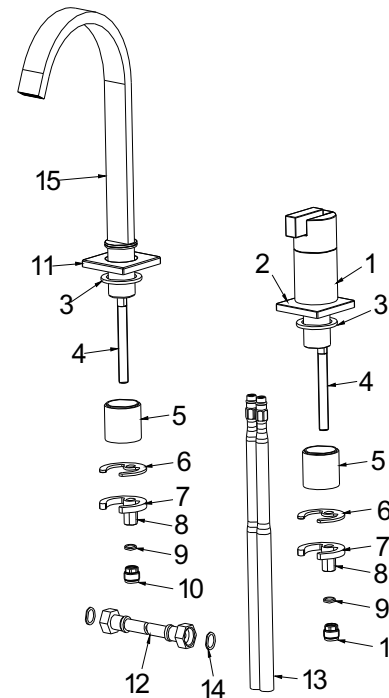
- Identify all components and check for completeness, particularly before arranging fitting.
- Fit the mixer body (1) to the basin or worktop using the fixing kit provided. The body plinth (2) and foam washer (3) go between the fitting and the mounting Surface, and the plastic spacer (5), rubber and metal 'C' washers (6,7) underneath. Secure using nut (8) on threaded stud (4).
- Fit the spout (15) to the basin or worktop using the fixing kit provided. The spout plinth (11) and foam washer (3) go between the fitting and the mounting surface, and the plastic spacer (5), rubber and metal 'C' washers (6,7) underneath. Secure using nut (8) on threaded stud (4).
- Screw the two adaptors (10) to the threaded studs (4) ensuring washers (9) are in place.
- Connect the flexible hose (12) to the two adaptors (10) to link the mixer and spout, ensure washers (14) provided are used.
- Fit the tail pipes (13) to the fitting and connect the hot and cold supplies. DO NOT OVERTIGHTEN. Soft copper tails can be carefully bent and cut to length to meet supply pipes.
- Fully open the mixer letting it run for a few minutes, check all joints and Connections for leaks.
- See over the page for aftercare instructions.

## MAINTENANCE

### **If the fitting begins to drip:**

- Turn off the water supply.
- Lift lever (a) into the 'on' position and loosen visible grubscrew (b).
- Pull off lever and then main part of handle (c).
- Using suitable tool (28 mmA/F), remove cartridge retaining nut (d).
- Carefully clean cartridge (e), seal and seating.
- Replace components and turn on the water supply.
- Contact our helpline if problem persists.

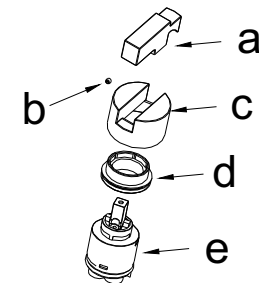
## INSTALLATION DIAGRAM



## CONTENTS:

1. Mixer Body	(x1)
2. Body plinth	(x1)
3. Foam washer	(x2)
4. Threaded stud	(x2)
5. Plastic spacer	(x2)
6. Rubber 'C' Washer	(x2)
7. Metal 'C' Washer	(x2)
8. Nut	(x2)
9. Small washer	(x2)
10. Adaptor	(x2)
11. Spout plinth	(x1)
12. Flexible hose	(x1)
13. Inlet pipe	(x2)
14. Small Washer	(x2)
15. Spout	(x1)

## Maintenance Diagram



### **Please Note: -**

In the unlikely event you find a part missing please contact our Customer Service Help line on +44(0)844 701 6273 or email [enquire@bristan.com](mailto:enquire@bristan.com) for immediate despatch of part.