

Figure 7 B8419AA Rosita Basin Mixer Single Lever with Pop-up

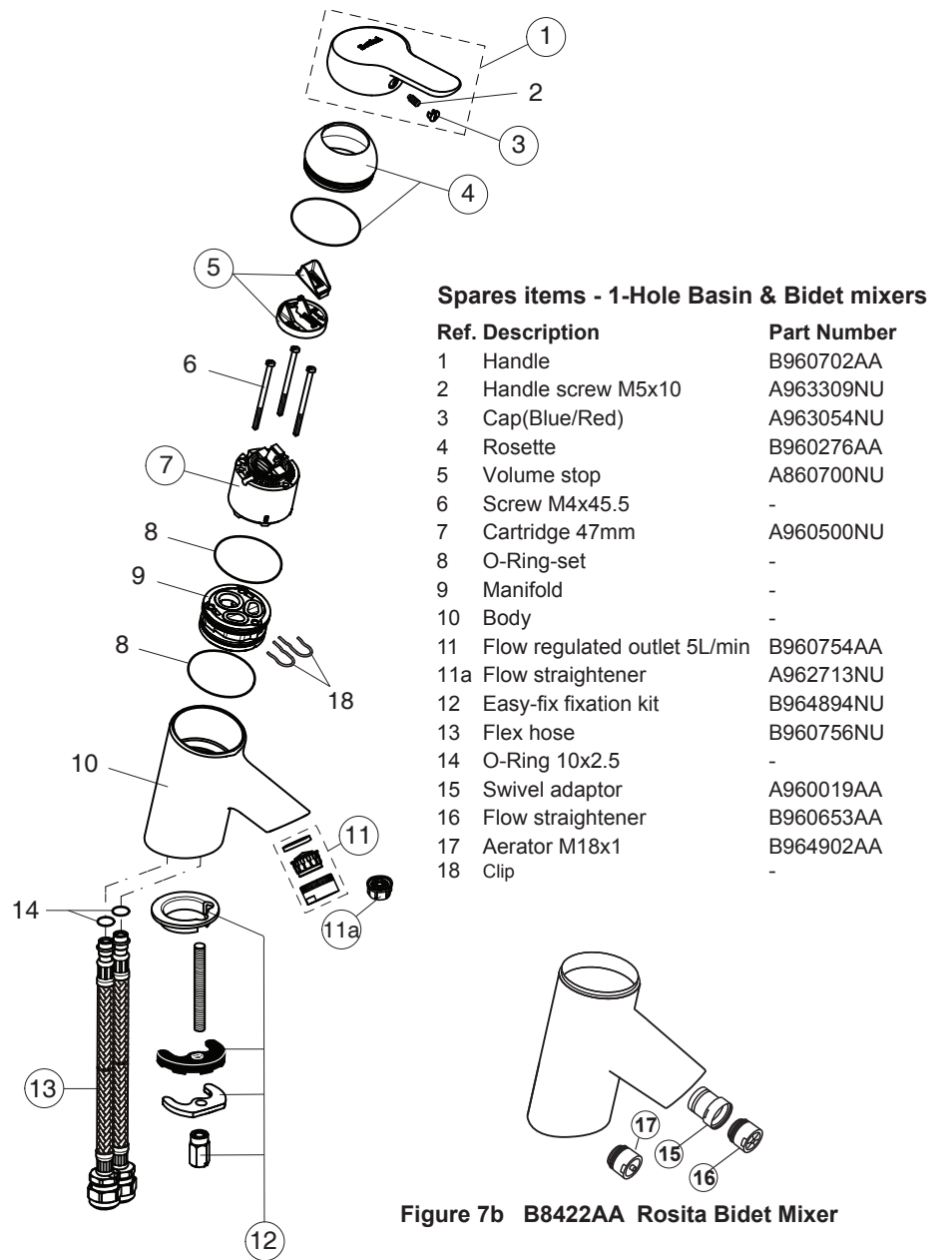
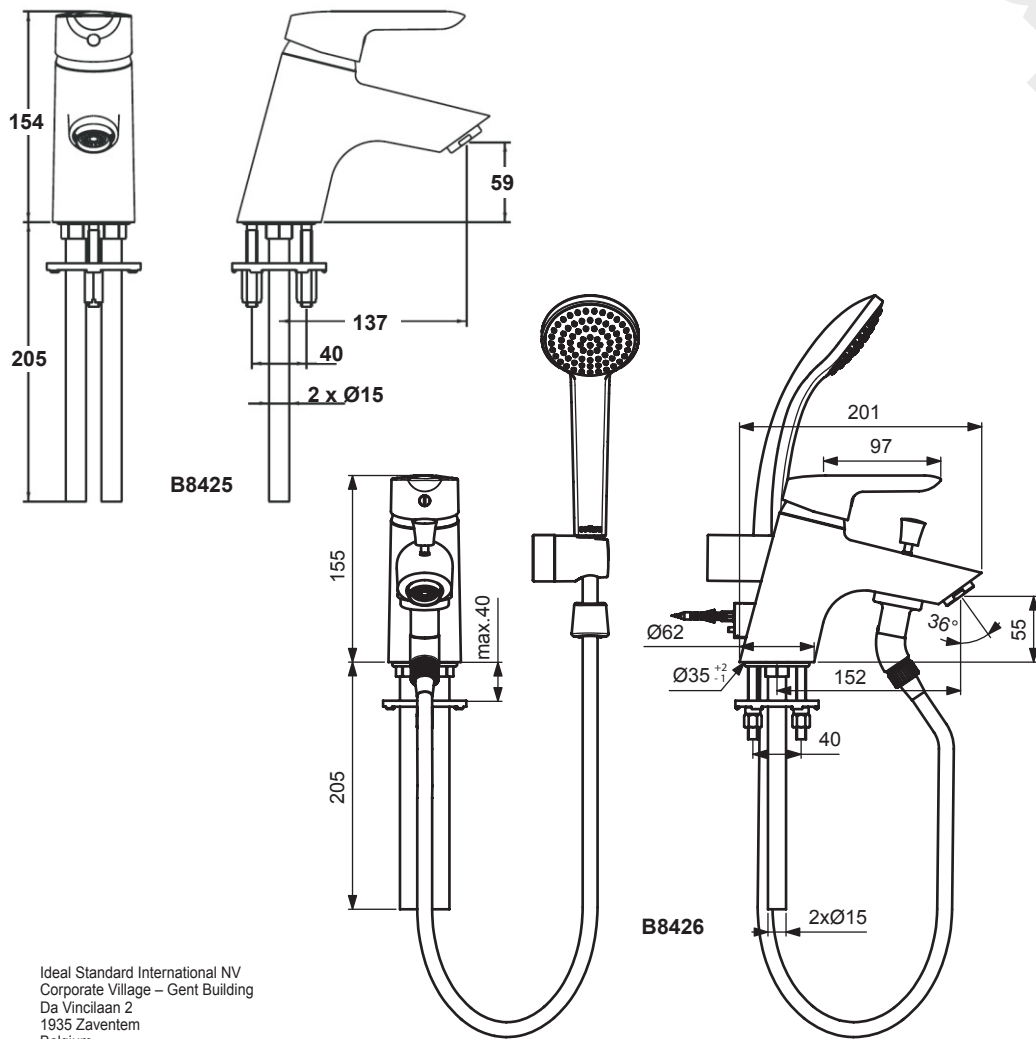


Figure 7b B8422AA Rosita Bidet Mixer

Figure 7a B9241AA Mixer Single Lever without Pop-up



Ideal Standard International NV
Corporate Village – Gent Building
Da Vincilaan 2
1935 Zaventem
Belgium
<http://www.idealstandardinternational.com>

CUSTOMER CARE HELPLINE
0870 129 6085

CUSTOMER CARE FAX
01482 499611

E-MAIL
UKcustcare@IdealStandard.com

Sottini pursues a policy of continuing improvement in design and performance of its products. The right is therefore reserved to vary specification without notice.

Sottini is a division of Ideal Standard (UK) Ltd

Sottini
The Bathroom Works, National Avenue
Kingston-upon-Hull, HU5 4HS England

4763 01/16

B865372

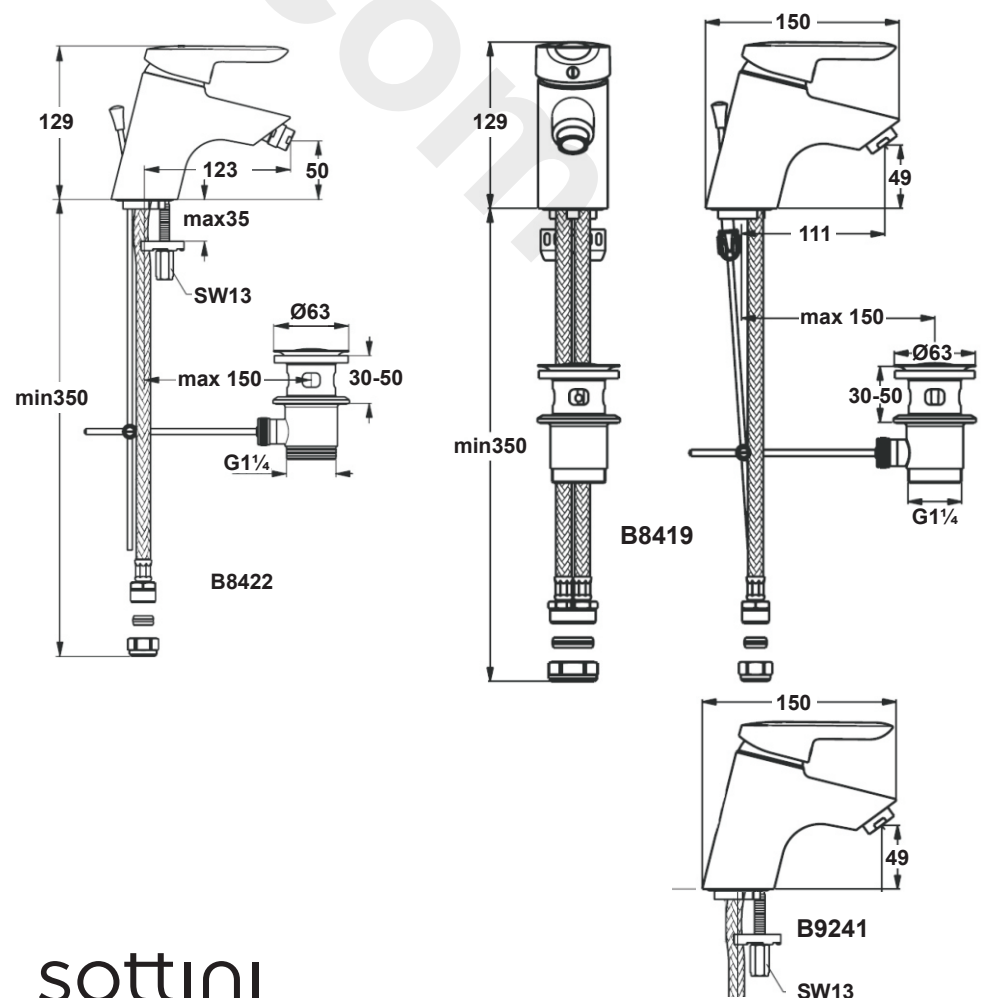
Installation Instructions

ROSITA

Single Lever Bathroom Fittings

B8419AA
B9241AA
B8422AA
B8425AA
B8426AA

ROSITA BASIN MIXER SINGLE LEVER WITH POP-UP
ROSITA BASIN MIXER SINGLE LEVER WITHOUT POP-UP
ROSITA BIDET MIXER SINGLE LEVER
ROSITA BATH FILLER 1- HOLE SINGLE LEVER
ROSITA BATH SHOWER MIXER 1-HOLE SINGLE LEVER



sottini

INSTALLER: After installation please pass this instruction booklet to user

2 RANGE, SUPPLY CONDITIONS & OPERATION

The fittings covered by this installation and maintenance instruction should be installed in accordance with the water regulations published in 1999*, therefore, Sottini would strongly recommend that these fittings are installed by a professional installer

*A guide to the Water Supply (Water Fittings) Regulations 1999 and the Water Byelaws 2000, Scotland, is published by WRAS (Water Regulations Advisory Scheme) Fern Close, Pen-y-Fan Industrial Estate, Oakdale, Newport, NP11 3EH. ISBN 0-9539708-0-9

WATER SUPPLIES

Rosita single lever fittings are designed for use on systems where the water pressure is a minimum of 0.1 bar (0.2 bar for bidet) and they are suitable for use up to a pressure of 5.0 bar. It is recommended that the hot and cold supply pressures are reasonably balanced and from a common source. With the exception of the basin mixers B8419AA & B9241AA, Rosita single lever fittings are supplied with a flow straightener in the spout. When fitting on pressures in excess of 1.0 bar it is recommended that an aerator (not supplied) should be substituted. The Rosita basin mixers, B8419AA & B9241AA come fitted with a 5 litre/min regulated aerator (B960889NU). A flow straightener insert (A962713NU), which may be preferable where pressures are lower than 1.0 bar, is supplied separately.

CODE FOR SUSTAINABLE HOMES

The Basin and Bidet Mixers are fitted with a "click" mechanism designed to encourage the user to select a flow rate of about 50% of maximum. Also, both Basin and Bidet mixers are supplied with a regulated aerator loose in the box. This regulated aerator which has a flow rate value of 5 litres/minute should be fitted where an installation is seeking an optimum rating under the Code for Sustainable Homes.

CONNECTIONS

It may be necessary to insert the flexible inlet tails of the Basin and Bidet fittings through the tap hole from below before screwing them into the fitting body as the inlet end connectors may not pass through the tap hole when fitted. Ensure they are tightened before securing the fitting to the tap deck.

Basin/bidet monoblock - Flexible inlet tails with 15mm compression connectors
Bath Filler - 15mm copper tails
Bath/Shower Mixer - 15mm copper tails

For the Bath mixers only it should be noted that the hot supply should be connected on the right and the cold connection on the left. (See Figure 2)

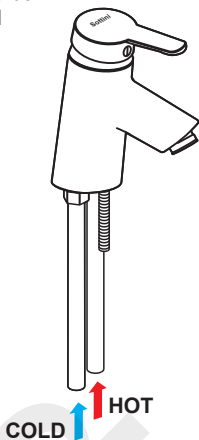


Figure 2 Bath Mixer Connections

3 LOCATION & FIXING

ONE HOLE BATH FILLERS

IMPORTANT NOTE
These one hole bath fittings are designed for a corner installation (see fig 6) or a position along the front side rim of the bath. Do not fit in line with the overflow assembly

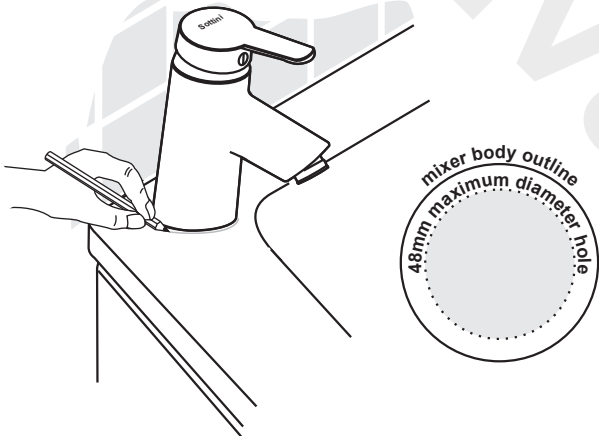


Figure 3 Drilling the bath tub

The one hole bath filler requires a bath supplied without tap holes. The installer will have to drill a 48mm diameter hole in the rim but before doing this it is worth considering the following questions.

- Will a shower screen, if fitted, foul the fitting?
- Is there adequate space for the handle rotation?

Check the position before fitting the inlet tails and draw a pencil line around the base of the mixer (Fig 3). In the centre of the of the outline, drill a 48mm hole. (It is important not to exceed this size otherwise the sealing washer may not seal correctly.)

4 CARTRIDGE REPLACEMENT

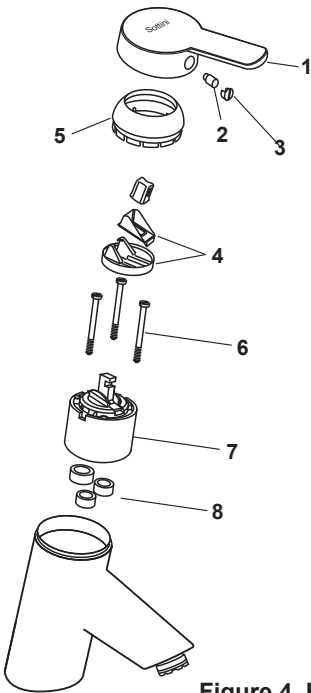


Figure 4 Basin and Bidet Mixers

Basin and Bidet Fittings

- Turn off both hot and cold water supplies.
- Raise lever handle fully, remove plastic index cap (3) and undo grub screw (2). Pull off handle.
- Pull off shroud (5).
- Remove click mechanism components (4).
- Undo screws (6). The cartridge (7) can then be lifted out.
- Ensure seals (8) have been removed with the cartridge.
- Position new cartridge ensuring the location peg engages in the appropriate hole and reverse the above procedure for assembly.

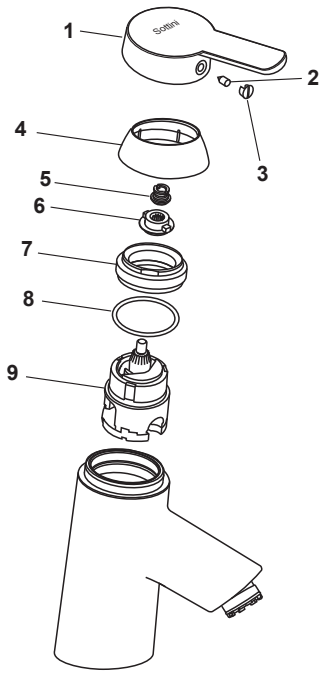


Figure 5 Single Lever Bath Filler

5 OPERATION

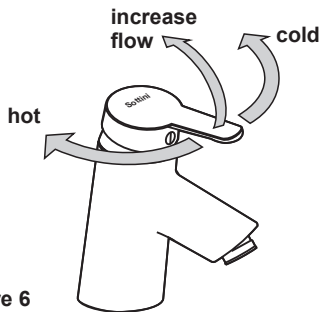


Figure 6

6 CLEANING

When cleaning the fittings always use soap based cleaners. Never use abrasive or scouring powders and never use cleaners containing alcohol, ammonia, nitric acid, phosphoric acid or disinfectants.

7 SPARE PARTS

Spares items - 1-hole bath mixers

| Ref. | Description | Part Number |
|------|----------------------------------|-------------|
| 1 | Lever, with Sottini logo | B960701AA |
| 2 | Screw M4x8 | B960491NU |
| 3 | Cap (Blue/Red) | A963054NU |
| 4 | Cap | B960493AA |
| 5 | Drive insert nut M6 | - |
| 6 | Drive insert | A960034NU |
| 7 | Multiport locking ring | A963022NU |
| 8 | O-Ring 35x3.2 | A962715NU |
| 9 | Multiport cartridge 40 high flow | A960145NU |
| 10 | Diverter knob | B960514AA |
| 11 | Body bath/shower, RM | - |
| 12 | Flow straightener M28x1 | A960460AA |
| 13 | O-Ring 31.47x1.778 | - |
| 14 | Nipple M36x1/M34x1.5 | - |
| 15 | Diverter set | B960495AA |
| 16 | Elbow set | B960496AA |
| 17 | Non return valve | B961346NU |
| 18 | Connecting set | B960492NU |
| 19 | Intet tails 15mm Copper | A960133NU |
| 20 | Flex. hose G1/2/1800mm | A963173NU |
| 21 | Wall bracket | B960925AA |
| 22 | Wall fix | - |
| 23 | Handspray | - |

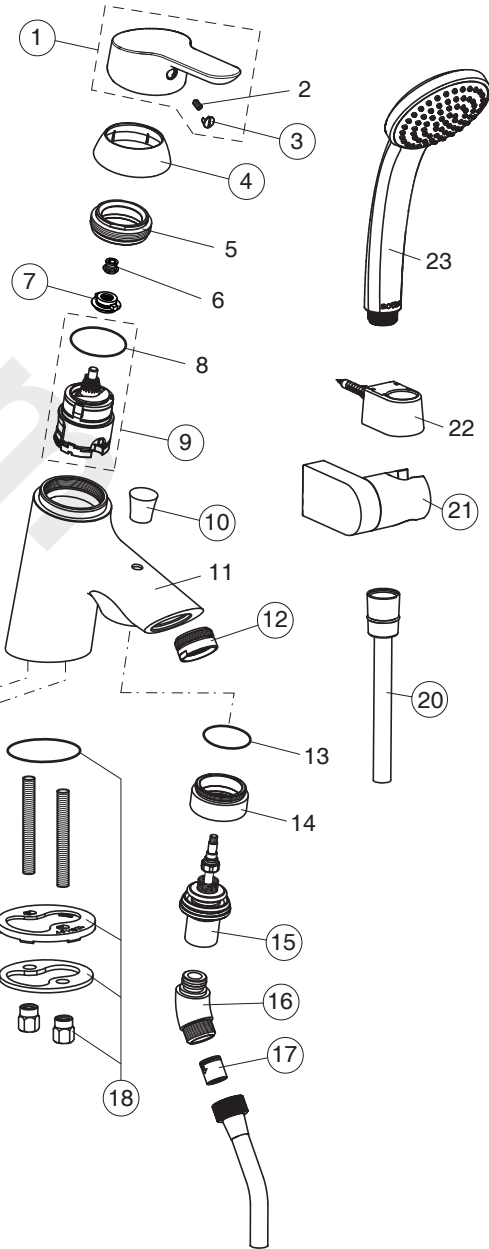


Figure 9 B8426AA Rosita Bath Shower Mixer 1-hole Single Lever

Figure 8 B8425AA Rosita Bath Filler 1-Hole Single Lever