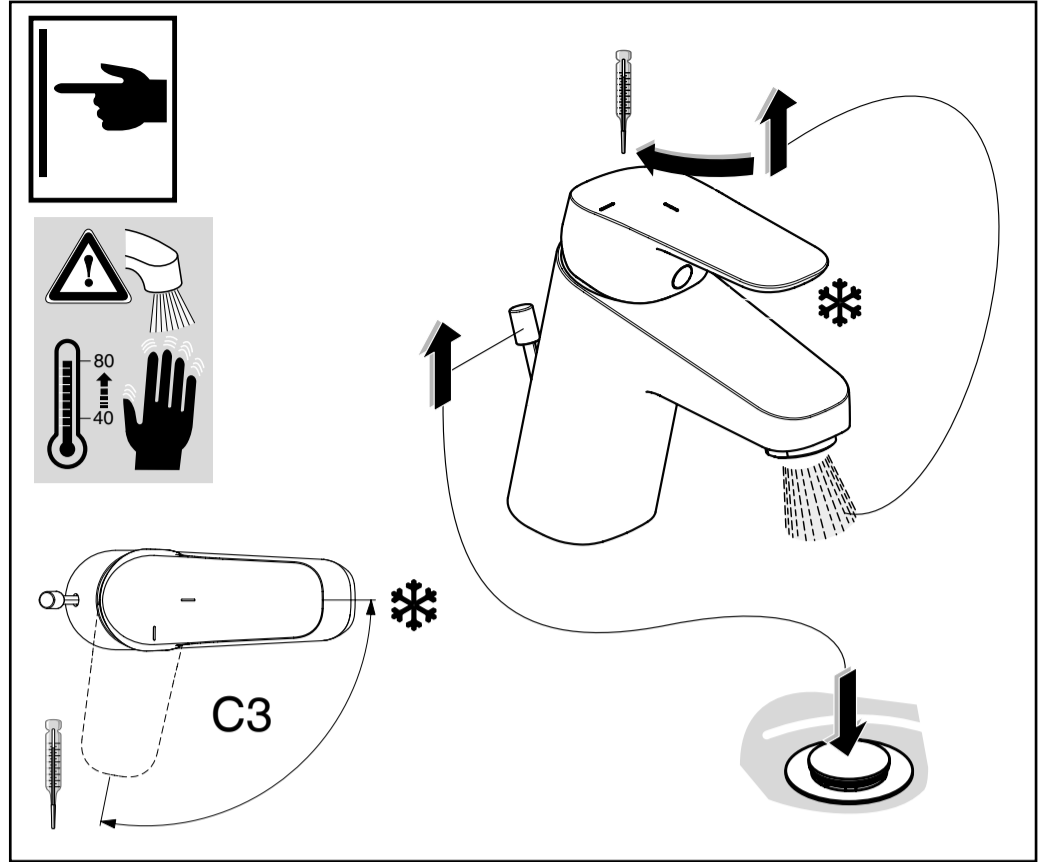


	P	bar		MAX. 10		5			Q	(3 bar)
	T	°C		MAX. 80		65				l/min
						40				5



	P		T	°C	°C	°C	°C	°C	°C	0	1	2	3	4	5
										°C	°C	°C	°C	°C	°C
	50°C	15°C	50	49	44	40	35	33							
	65°C	15°C	65	63	57	50	44	40							
	85°C	15°C	85	83	74	64	56	50							

