

FORGE

stainless steel wall 3 hole mounted basin mixer

20004010645



DIMENSIONS

Height of the body	83mm
Reach of the spout	184 – 194 mm

CARE AND MAINTENANCE:

To maintain the appearance of this product, ensure that it is regularly cleaned only using a clean, soft damp cloth. A solution of warm water and a mild detergent may be used where necessary, and then the fitting rinsed thoroughly and wiped dry. Any other cleaning action will invalidate your warranty.

The aerator should be unscrewed and cleaned periodically in warm water. Abrasive cleaners, scouring cleaners and acidic cleaners must not be used under any circumstances. Avoid contact with all solvents (including chlorinated solvents, ketones or acetones as these may result in surface deterioration or etching). Isolate the water to the tap before performing any form of internal maintenance.

CLEANING THE CARTRIDGE

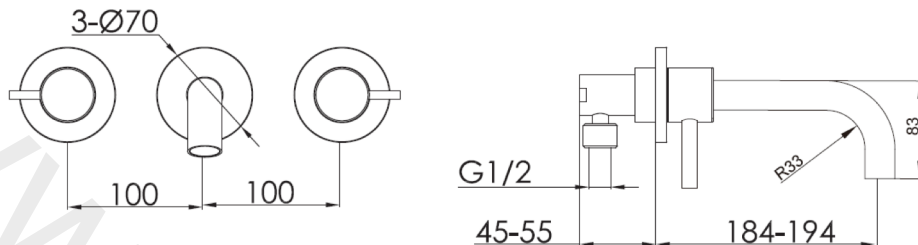
The concealed cartridge should give trouble free service, but in the event of any problems, servicing is straight forward.

With an Allen key loosen the screw on the handle. Pull off the handle and unscrew the cover. Using the correct size spanner unscrew and remove the retaining nut. Pull out the cartridge taking note of its orientation. Wash the cartridge with clean running water and make sure that any trapped debris has been removed. Dry and lightly grease the seal (only use silicone grease) and replace the cartridge followed by the nut, cover and handle.

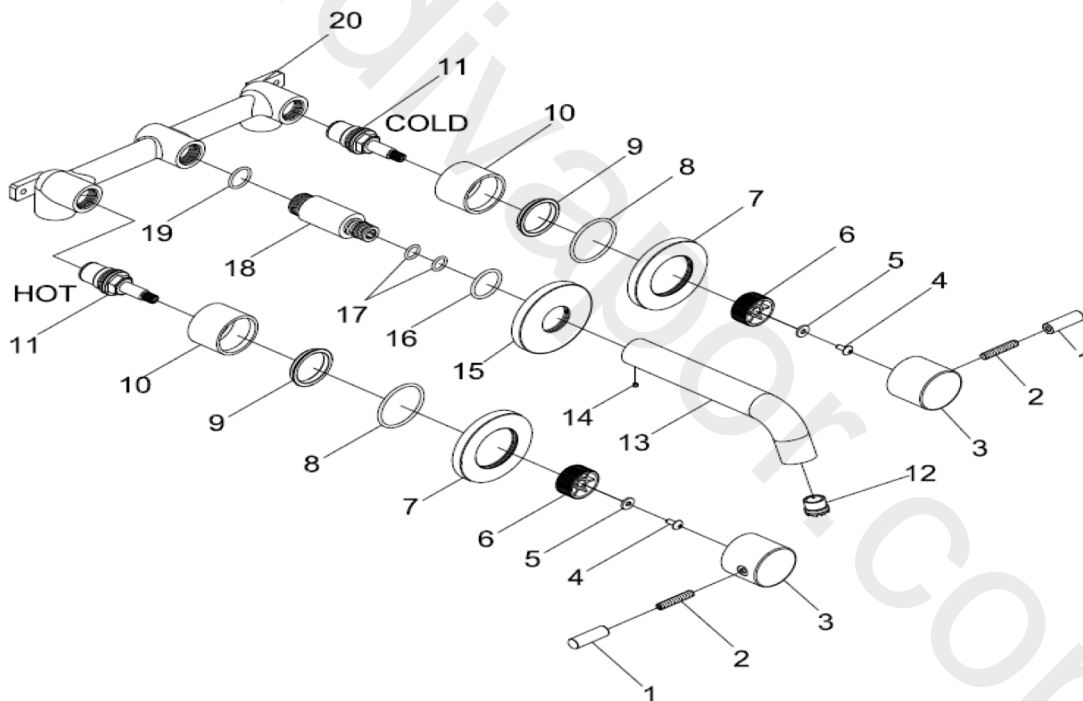
INSTALLATION GUIDELINES

1. Installation should be carried out by a competent engineer, in accordance with water regulations.
2. If isolating valves aren't already fitted, fit them to the inlet feeds.
3. Before installation, ensure supply pipes are flushed clean. Debris or loose particles will affect the efficiency of the ceramic disc cartridge. Failure to flush through pipe work before installation of taps may cause serious damage to the ceramic disc cartridge, for which bathstore will not be liable.
4. Hot & cold pressures should be equally balanced.
5. To prolong the life of the cartridges in hard water areas and reduce servicing periods we recommend that a suitable water softener be fitted.
6. The cavity in the wall needs to be 40mm-60mm depth, 270mm wide and 50mm High.
7. Remove the handles spout and covers.
8. Install the body in the cavity and connect to the hot and cold feeds, ensure that it is secure.
9. Fit handles and spout, turn on water supply, flush through and check for leaks. Then turn off water supply and remove the handles and spout.
10. Measure out and cut holes in the tiles/wall panels for controls and spouts to connect through.
11. Fit the tiles/wall panels
12. Refit covers handles and spout
13. Turn on the water supply and check again for leaks.

DIMENSIONAL DRAWING



EXPLODED PARTS – DRAWING



Please refer to part numbers when contacting Bathstore.

FLOW RATE & OPERATING CONDITIONS

Recommended water pressure 1 - 3 bar

Optimum water pressure 3 bar

0.5 BAR	8.8 L/Min
1 BAR	12.2 L/Min
2 BAR	16.4 L/Min
3 BAR	19.5 L/Min