

This installation guide covers model:

ARR-101-CP
ARR-201-CP

ARRONDI™

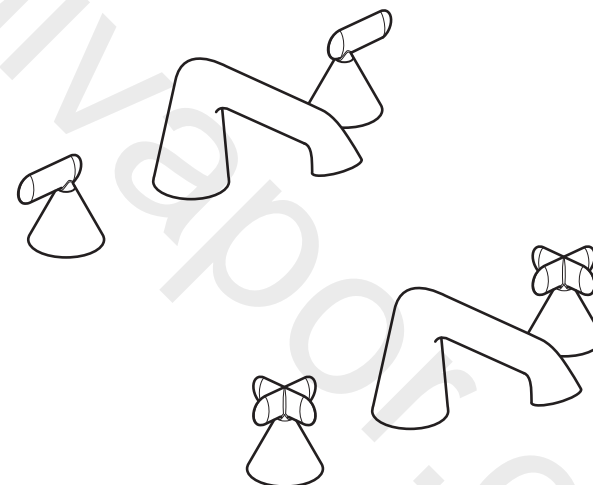
3 hole basin mixer

Installation Guide

ARR-101-CP
ARR-201-CP



WHERE
INSPIRATION
FLOWS



VADO
Wedmore Road Cheddar Somerset England BS27 3EB
tel 01934 744466
fax 01934 744345
www.vado.com
sales@vado.com

Version 1, 1-4-22

CONRAN AND
PARTNERS

VADO

Important - Please Read

Please read these instructions carefully before starting installation and keep for future reference.

Remove all packaging and check the product for missing parts or damage before starting installation.

Any alterations made to this product and fittings may infringe water regulations and will invalidate the guarantee.

The installation must comply with all Local/National Water Supply Authority Regulations/Byelaws and Building and Plumbing Regulations.

To be installed in accordance with BS EN806.

We strongly recommend that you use a qualified and registered plumber.

General Installation

This fitting is a mixing device and therefore water supplies should be reasonably balanced.

When installed, the fitting must comply with the requirements of the Water Supply (Water Fittings) Regulations 1999 and Scottish Byelaws 2004.

For further information, contact the Water Regulations department of your local water supplier (see the WRAS website www.wras.co.uk for details) or the Water Regulations Advisory Scheme by email (info@wras.co.uk) or telephone: 01495848454.

Before making any inlet pipe connections, all supply pipes MUST be thoroughly flushed to remove debris. Failure to do so could result in damage or low flow from the mixer unit. Water Supply (Water Fittings) Regulations 1999 Schedule 2 Section 13.

The fitting of isolating valves to the inlet feeds is advised for ease of maintenance.

Please take great care when installing this mixer not to damage its surface.

Please note if installing in an enclosed environment, access should be left for servicing and maintenance. No costs relating to inadequate access can be accepted.

Please note: installation for the ARR-101-CP is shown throughout this guide, please follow the same instructions to install the ARR-201-CP.

Operating Specifications

Operating Pressure

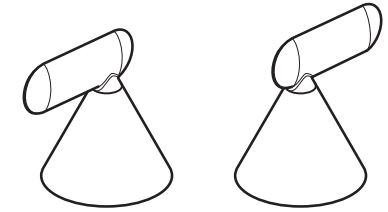
Minimum operating pressure - **1 bar**

Maximum operating pressure - **5 bar**

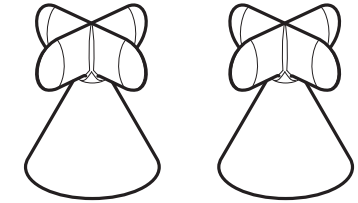
Contents of Packaging



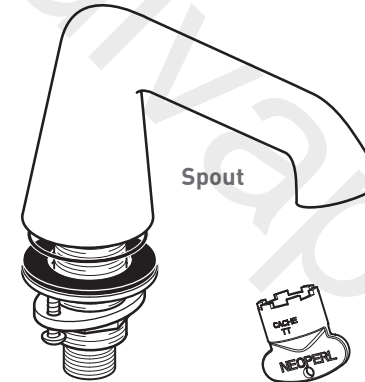
Installation guide & User manual



ARR-101 handles to suit your model



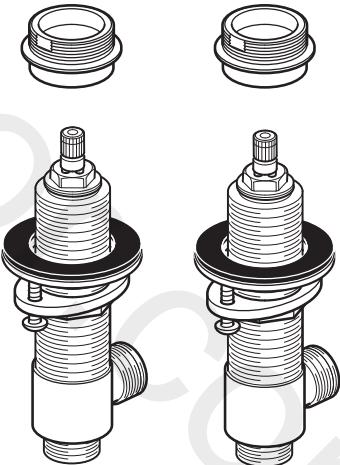
ARR-201 handles to suit your model



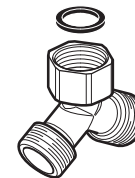
Spout



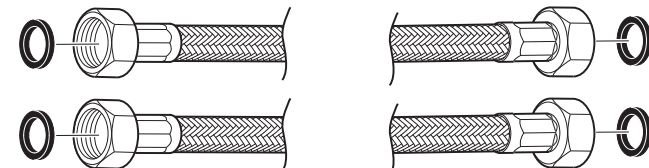
Aerator key



Hot & Cold valves with covers

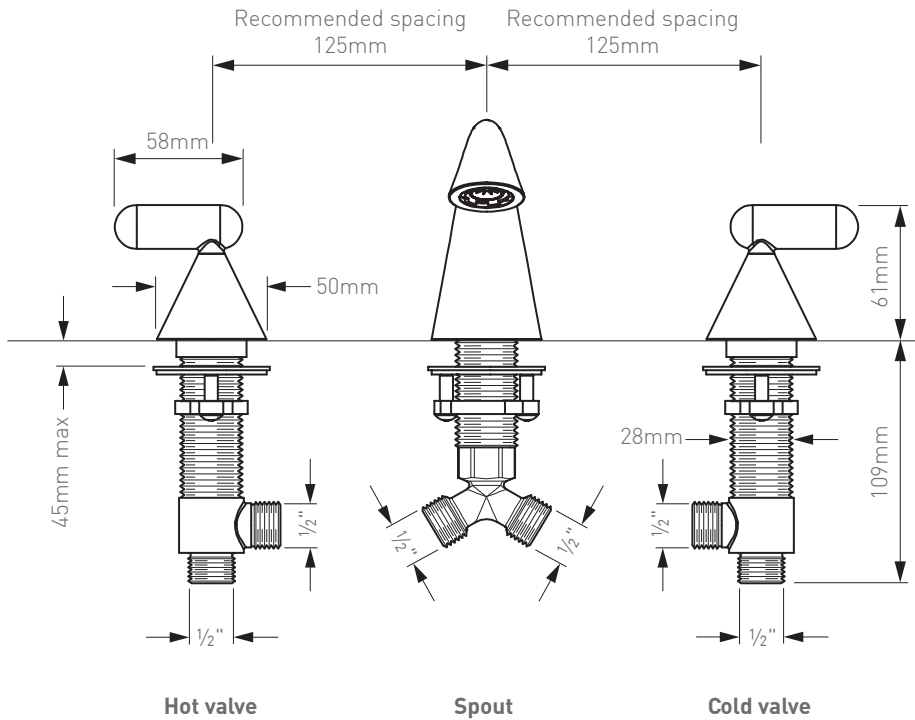
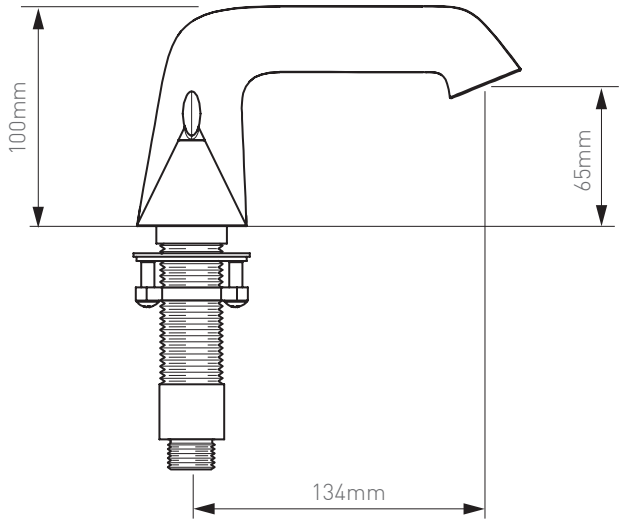


Tee piece and washer

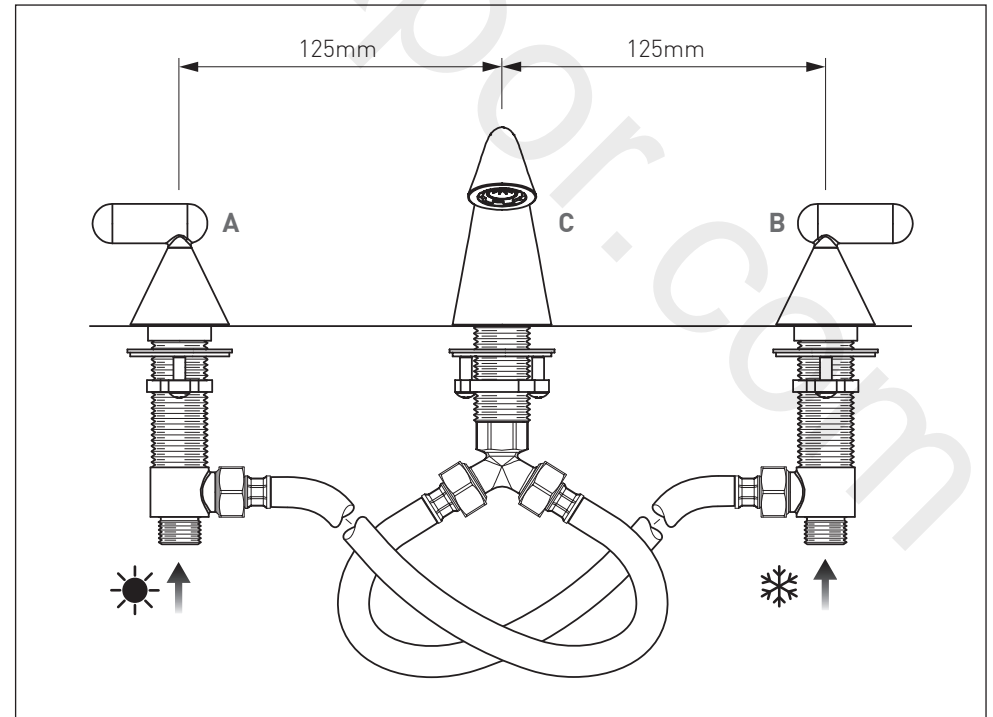
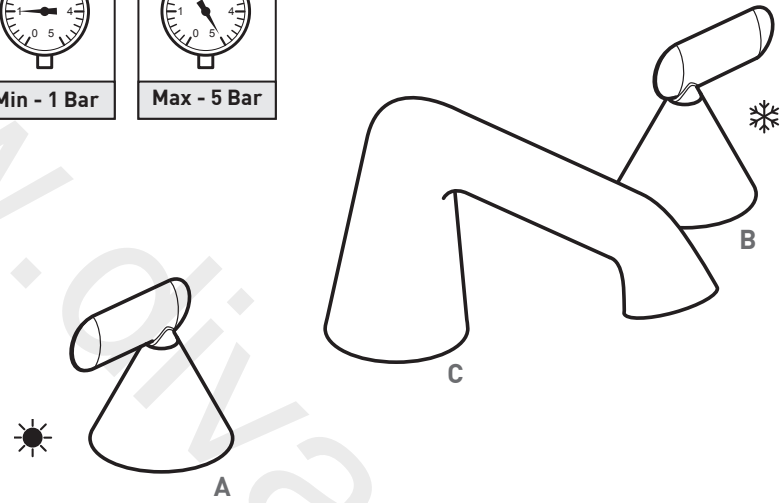
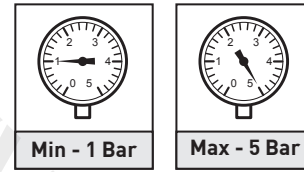


Flexible hoses with 2 washers x 2

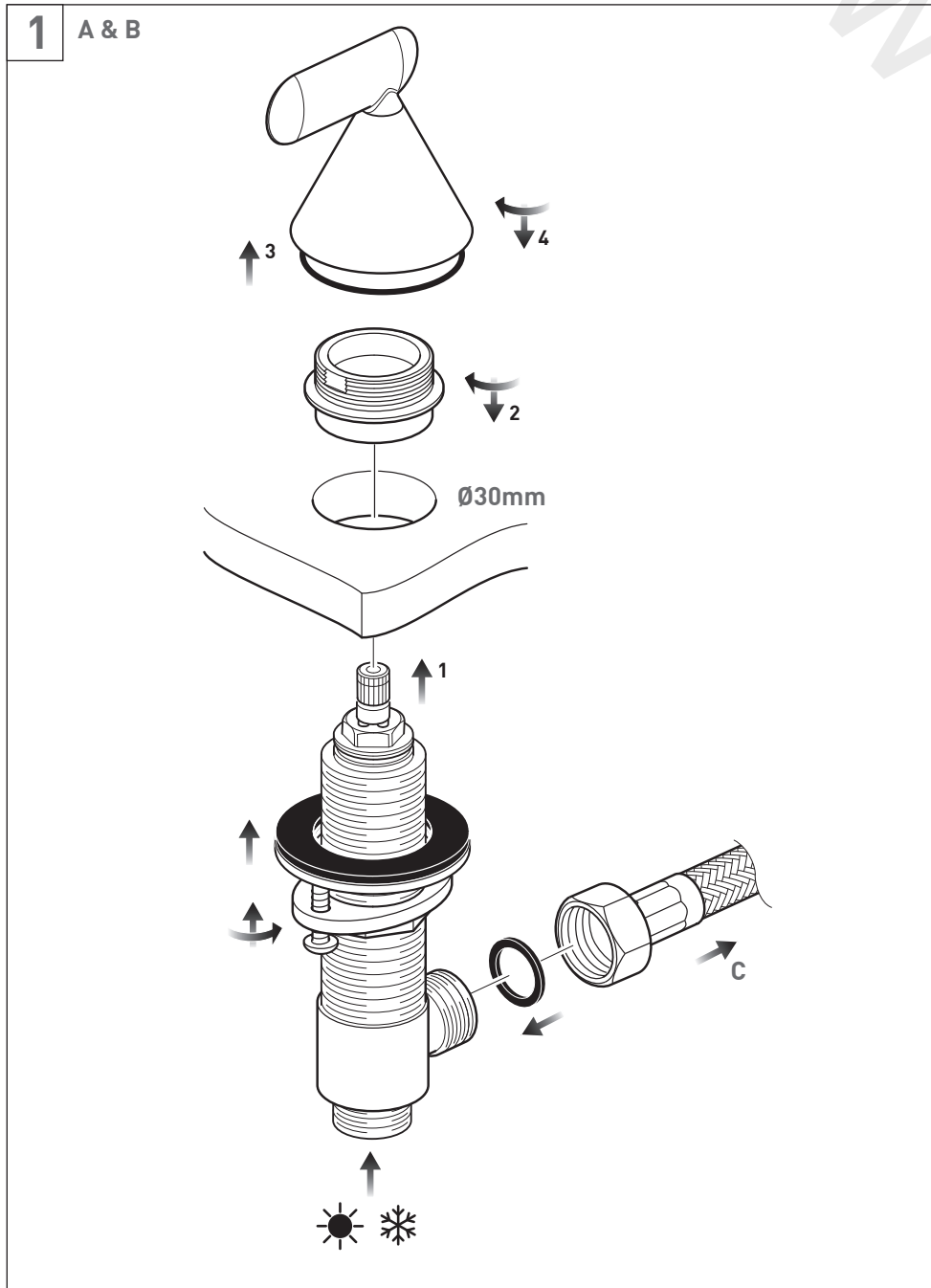
Dimensions



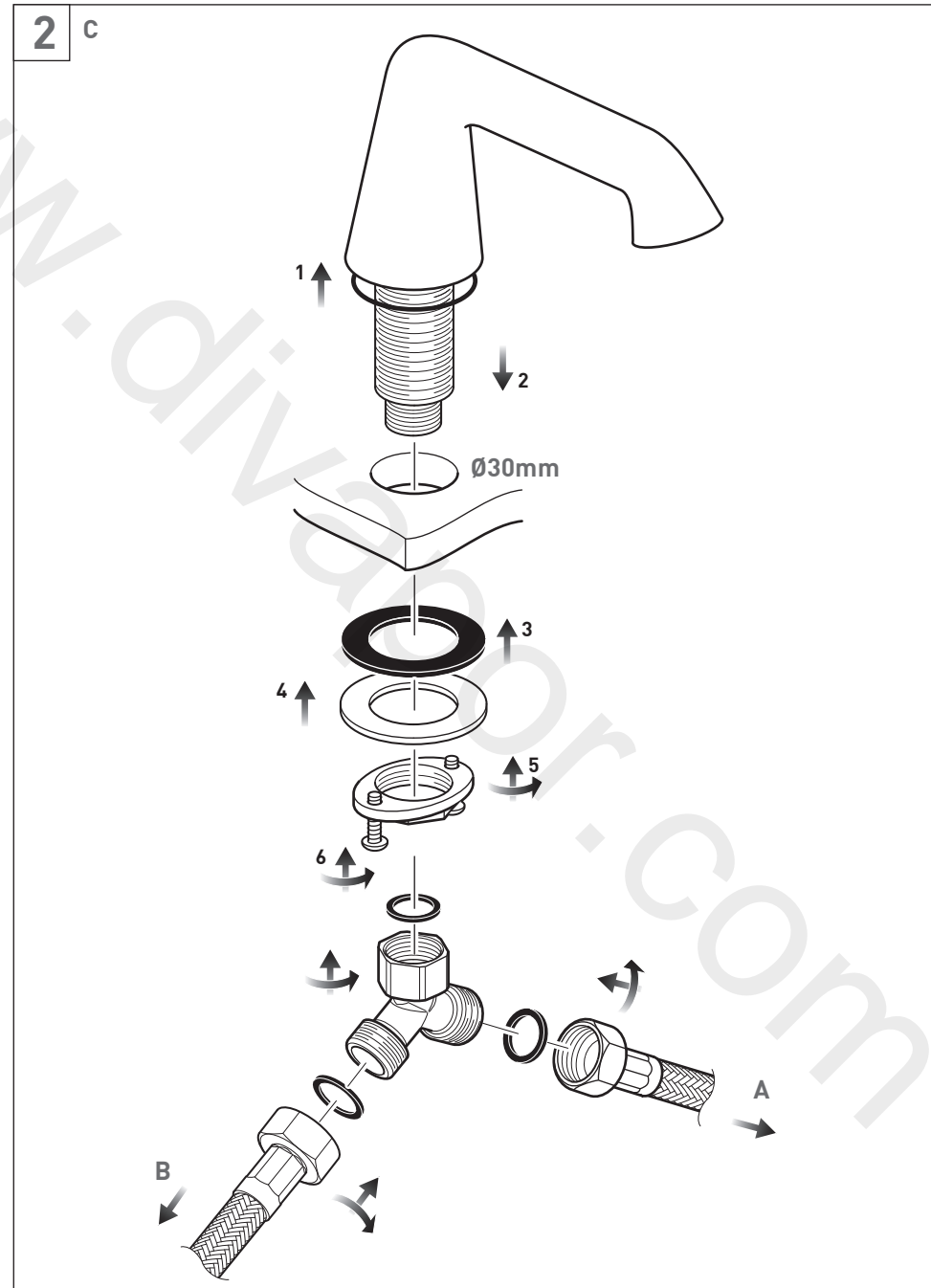
Installation - Quick Guide



Installation - Quick Guide



Installation - Quick Guide



Installation - Flow Control

Before installing, flush through the pipe work to ensure removal of debris, turn off the water supply.

Make sure the O-ring is in place on the underside of the shroud.

Identify the hot and cold valves (each valve will be marked). The hot valve should be on the left side and cold on the right.

Remove the threaded cover from the top of the valve body.

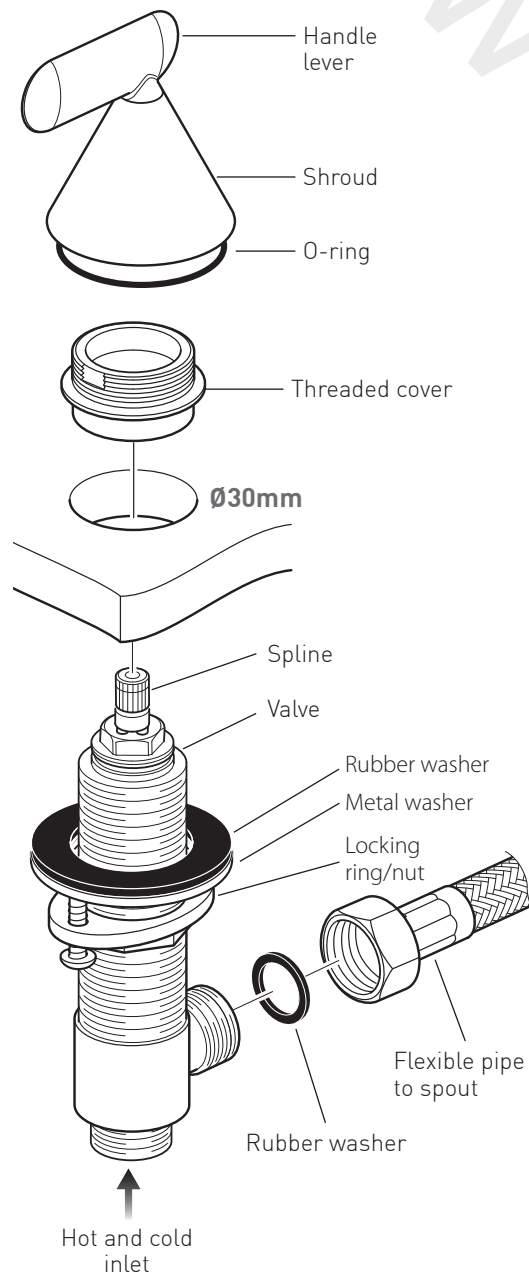
Push the valve body up through the corresponding hole in the basin, ensuring the outlet connection is pointing roughly in the right direction (towards the spout). Screw the threaded cover back on.

Make sure the two bolts in the locking ring are unscrewed but do not remove them. From the underside, slide up the rubber and metal washer, the rubber washer should be on top. Screw up the locking ring until the bolts touch the metal washer. Tighten the two bolts to clamp the mixer to the basin.

CAUTION: Do not over-tighten the bolts as this may damage the basin.

With the valve in the off position (fully anti-clockwise for hot and clockwise for cold) carefully slide the handle onto the splines of the valve, making sure the handle is in the correct off position. Screw the base until secure. Connect the flexible hose to the outlet connection, ready to attach to the spout tee piece. Connect the inlet water supply, **hot on the left, cold on the right**.

CAUTION: When installing the flexible hoses, do not kink or bend them more than the 60mm diameter.



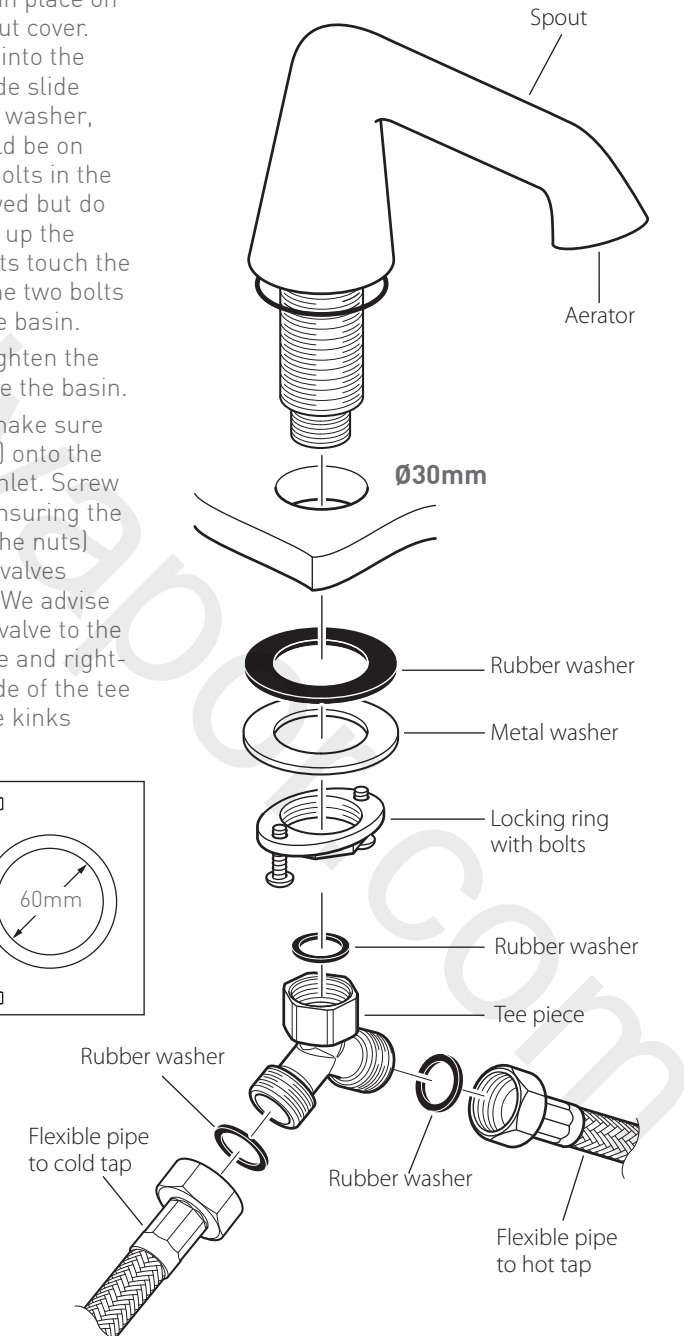
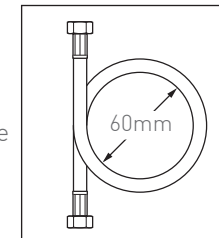
Installation - Spout

Make sure the O-ring is in place on the underside of the spout cover. Position the spout down into the basin. From the underside slide on the rubber and metal washer, the rubber washer should be on top. Make sure the two bolts in the locking ring are unscrewed but do not remove them. Screw up the locking ring until the bolts touch the metal washer. Tighten the two bolts to clamp the mixer to the basin.

CAUTION: Do not over tighten the bolts as this may damage the basin.

Screw in the tee piece (make sure the washer is still inside) onto the bottom of the threaded inlet. Screw the two flexible hoses (ensuring the washers are present in the nuts) coming from the handle valves into the spout tee piece. We advise connecting the left-side valve to the right side of the tee piece and right-side valve into the left side of the tee piece, this is to eliminate kinks (as shown on page 5).

CAUTION: When installing the flexible hoses **do not** kink, or bend them more than the 60mm diameter as shown right.



Notes:

Notes:

www.divapor.com