



Product features:

- Metal construction throughout
- Thermostatic valve for safety & comfort
- 2 exit alternate control for output to 2 x shower or 1 x shower & 1 x bath
- Freshly designed contemporary blend
- 5 year limited warranty

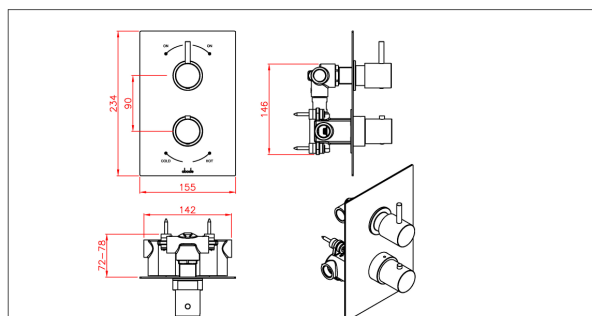
Packaged properties:

Box length (mm): 355 Box depth(mm): 150
Box width(mm): 205 Boxed weight (Kg): 3.8

Includes pop up waste?: No

Additional comments:

Product dimensions:



Euphoria
Thermostatic 2 Exit Concealed Shower
(Harmonie)

AB4530/4533 v1

abode

our policy is to continually
improve and develop products,
and accordingly we reserve the
right to amend specifications
without prior notice

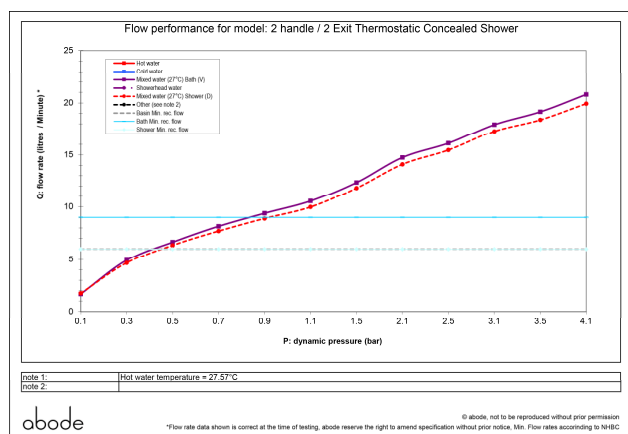
- Product mounted where: Wall
- Recommended hole size: 200 x 180 mm

- Overall Height / projection: 63 (max) mm
- Exit reach: N/A mm
- Exit height: N/A mm
- Base size: 155 x 234 mm

- Inlet centre distance(s):

- Min. fitting depth required: 72-78 mm10 mm
- Max. surface depth: n/a

Product flow characteristics:



- Min / Max water pressure (bar): 0.50* / 5.00
- *Detailed minimum pressure requirements for this product: Shower 0.5, Bath 0.9 (bar)

- Part G max. mixed flow rate at 3 bar (l/m): 17.92

- Inlet connection type / length: Fixed / n/a mm
- Inlet (plumbing connection) / outlet size: 1/2" F / 1/2" F

- Product flow characteristics: N/a
- Non return valve(s) supplied or position: h&c inlets

- Aerator type: N/a

- Control valve type: Thermostatic and diverter (8-20)
- Includes output diverter?: Yes

- Inlet meshed particle filters included: 0.60 mm
- Shower hose type / length: N/A / N/A

Warranty Summary (full details available on request):

- Materials and workmanship defects warranted for 5 years
- Valves and working parts warranted for 5 years
- Surface warranty defects warranted for 1 year
- O-rings, hoses & gaskets warranted for 1 year

Care instructions:

- Clean the mixers and showers regularly as required, using soap, do not use any other cleaners.
- Regular cleaning will prevent the build-up of lime scale and dirt
- After cleaning rinse thoroughly with clean water to remove any cleaner residue
- Residues of liquid soaps, shampoos and shower foams can also cause damage, so rinse with clean water after using, avoid contact with any abrasives