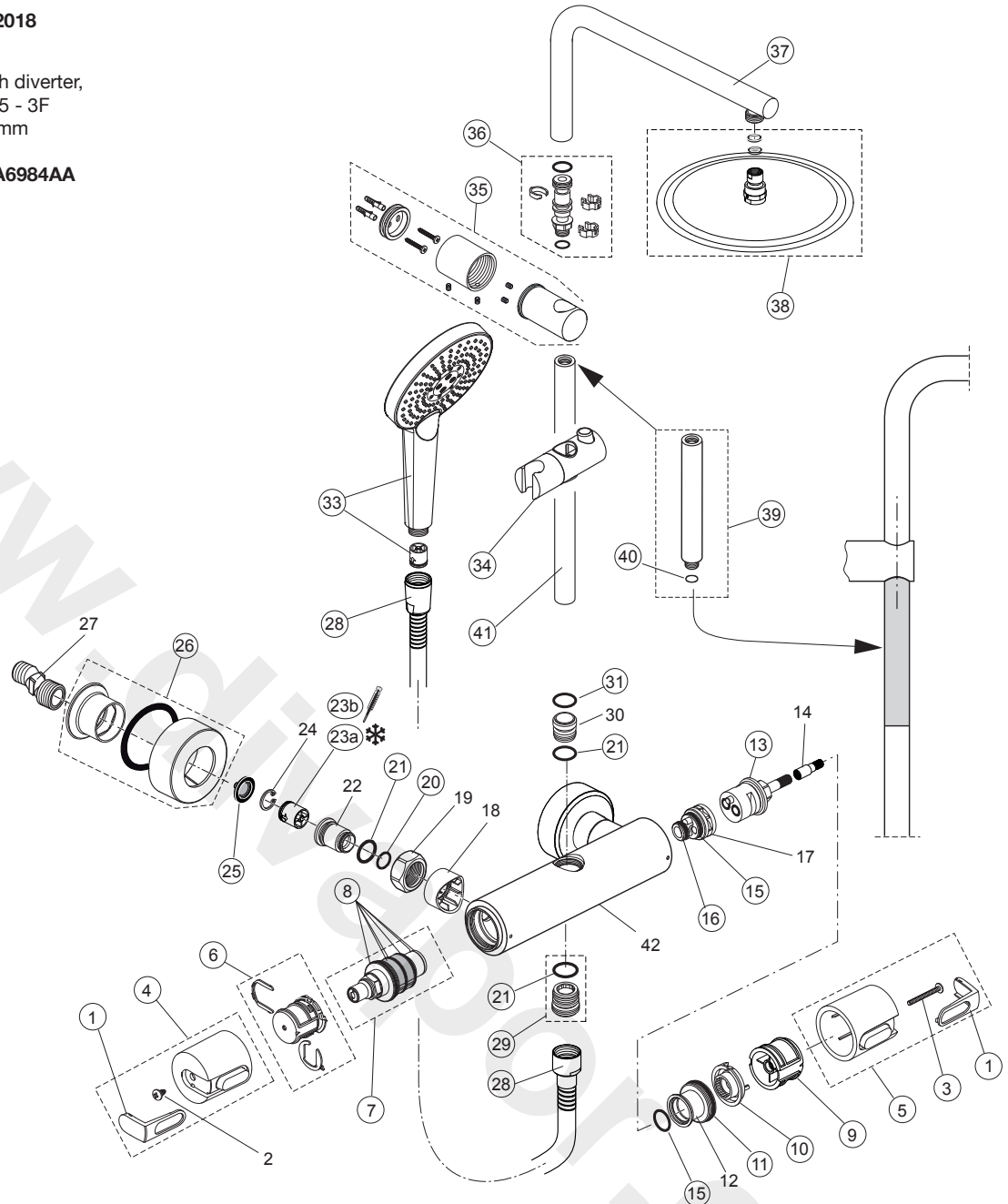


Produced from: **June 2018**

Shower Thermostat with diverter,
slide bar, handspray 125 - 3F
and Rainshower Ø 300mm

chrome **A6984AA**



Pos.	Description	Part-Number	Qty.	Pos.	Description	Part-Number	Qty.
1	Handle cap w. and w/o Logo	A 962 872 AA*	1 Set	23a	Non-return valve DW15CW	A 962 594 NU	2 pcs
2	Screw Ejot PT KB50x10			23b	Non-return valve DW15HW	F 960 942 NU	1 pcs
3	Screw M4 L=40	A 861 298 NU	2 pcs	24	Lock Ring		
4	Handle for Temperature	A 860 951 AA	1 Set	25	Strainer (screen)	A 962 595 NU	2 pcs
5	Handle for Volume control	A 861 296 AA*	1 Set	26	Escutcheon cpl.	B 961 016 AA	2 Set.
6	Temp. adjustment cpl.	A 963 427 NU*	1 Set	27	S-Connector		
7	Thermostatic Cartridge	A 962 229 NU	1 Set	28	Shower hose 1750 mm	A 4109 AA	1 pcs
8	Repair-Set Cartridge	A 962 230 NU	1 Set	29	Nipple G1/2 outside cpl.	A 963 651 NU	1 pcs
9	Handle insert (Set)	A 963 432 NU*	1 Set	30	Connector nipple shower bar		
10	Volume control stop ring	A 962 563 NU*	1 pcs	31	O - ring Ø 18,7 x 2,6	A 860 933 NU	1 Set
11	O - ring Ø 18 x 2	A 963 299 NU	1 Set	33	Handspray	B 1759 AA	1 pcs
12	Thread ring M34 x 1,5			34	Slider & holder f. handshr.	A 860 807 AA	1 Set
13	Stop valve with diverter	A 962 568 NU*	1 pcs	35	Wall fixation complete	F 960 891 AA	1 Set
14	Extension			36	Connector nipple cpl.	F 961 042 NU	1 Set
15	O - ring Ø 18,77 x 1,78	A 962 529 NU	1 pcs	37	Pipe (bend)	F 961 149 AA	1 pcs
16	O - ring Ø 12,42 x 1,78	A 961 332 NU	2 pcs	38	Headshower cpl.	B 0385 MY	1 pcs
17	Manifold diverter			39	Extension kit 150mm long	A 860 873 AA	1 pcs
18	Escutcheon			40	O - ring	A 961 332 NU	1 pcs
19	Coupling nut G3/4			41	Shower bar	A 861 144 AA	1 pcs
20	O - ring Ø 14 x 1,78	A 961 810 NU	2 pcs	42	Body		
21	O - ring Ø 17 x 2	F 960 894 NU	2 pcs				
22	Seat M20x1 left thread						

*Universal set (not all parts needed)