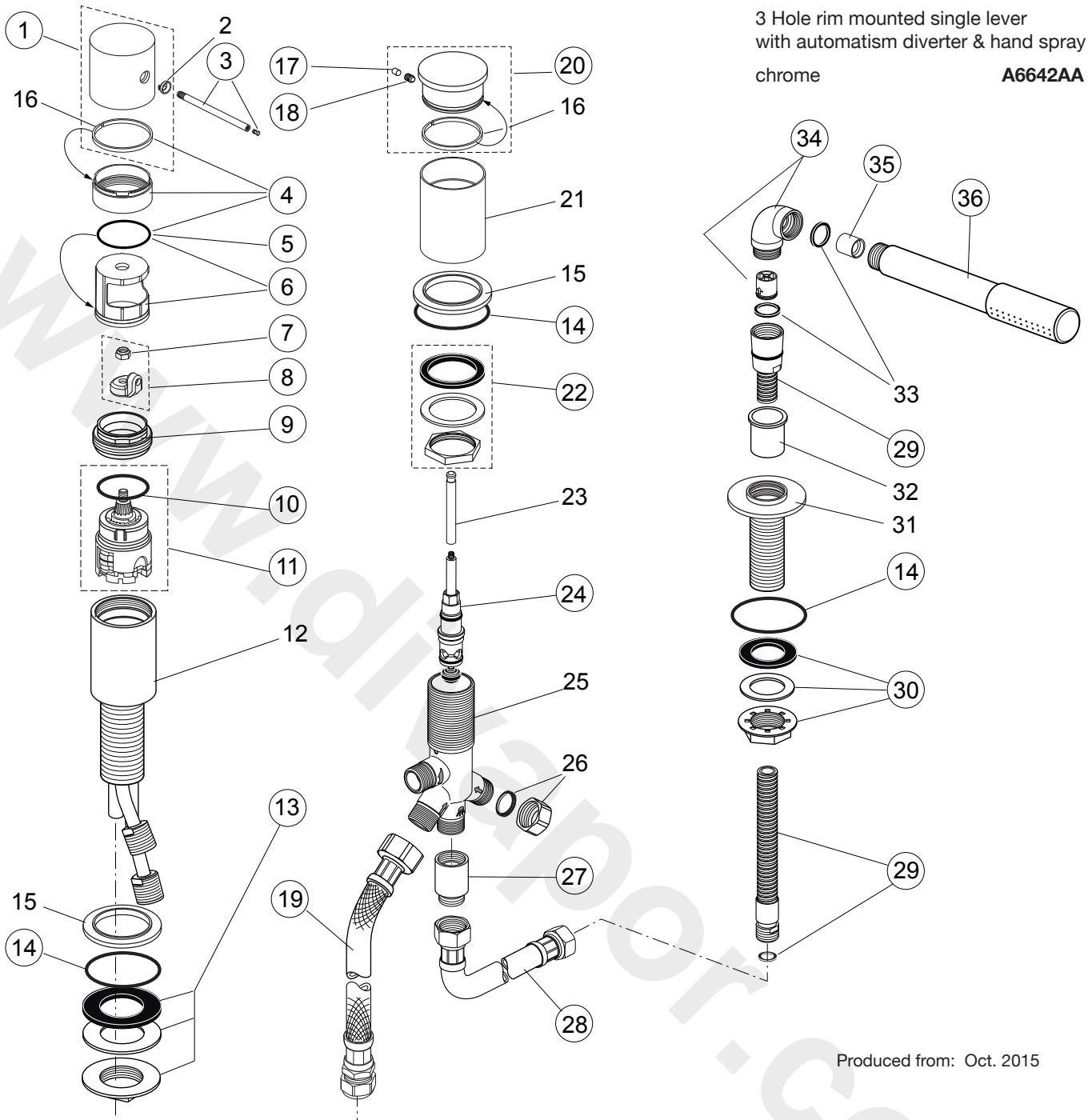


3 Hole rim mounted single lever
with automatism diverter & hand spray
chrome **A6642AA**



Produced from: Oct. 2015

Pos.	Description	Part-Number	Qty.	Pos.	Description	Part-Number	Qty.
1	Handle cap cpl.	F 960 994 AA	1 Set	20	Pull knob cpl. + Pos.23	F 961 022 AA	1 Set
2	Handle cap insert			21	Sleeve with Logo Sottini		
3	Lever stainl. steel polished	F 960 988 NU	1 Set	22	Fixation kit diverter	A 963 026 NU	1 Set
4	Cover ring Ø 45 complete	F 960 995 AA	1 Set	23	Spindle extension (Pos.20)		
5	O - ring Ø 41 x 1,78	A 961 863 NU	1 pcs	24	Diverter unit	A 963 805 NU	1 Set
6	Guide sleeve handle	F 960 996 NU	1 Set	25	Body diverter		
7	Fixing nut	A 961 974 NU*	1 pcs	26	Plug with Fibre-ring		
8	Lever adapter + pos. 7	F 960 997 NU	1 Set	27	Non-return valve complete	A 963 287 AA	1 pcs
9	Clamping nut M43 x 1,5	A 963 022 NU	1 pcs	28	Flex. hose G1/2 - M15x1	H 960 185 NU	1 pcs
10	O - ring Ø 35 x 3,2	A 962 715 NU	1 pcs	29	Shower hose G1/2 -M15x1	H 960 440 AA	1 pcs
11	Cartridge Multiport cpl.	A 860 621 NU	1 Set	30	Fixation kit shower-holder	H 960 657 NU*	1 Set
12	Body Single lever			31	Holder for hand shower		
13	Fixation kit G 1"	H 960 294 NU*	1 Set	32	Plastic insert		
14	O - ring Ø 48 x 3,0	F 961 021 NU	1 Set	33	Washer Ø 20,8 x 14,5 x 2,5		
15	Escutcheon			34	Elbow 96° f. Hand spray	F 960 865 AA	1 pcs
16	Sliding ring Ø 43 x 1,6			35	Flow limiter 8l/min	B 961 093 NU	1 pcs
17	Handle plug	A 963 751 NU	1 pcs	36	Hand shower	F 960 900 AA	1 pcs
18	Thread pin M5x10 DIN915	A 963 309 NU	1 pcs				
19	Flex. hose G1/2 x 400mm	A 962 823 NU	1 pcs				

* Universal-Set (not all parts needed)