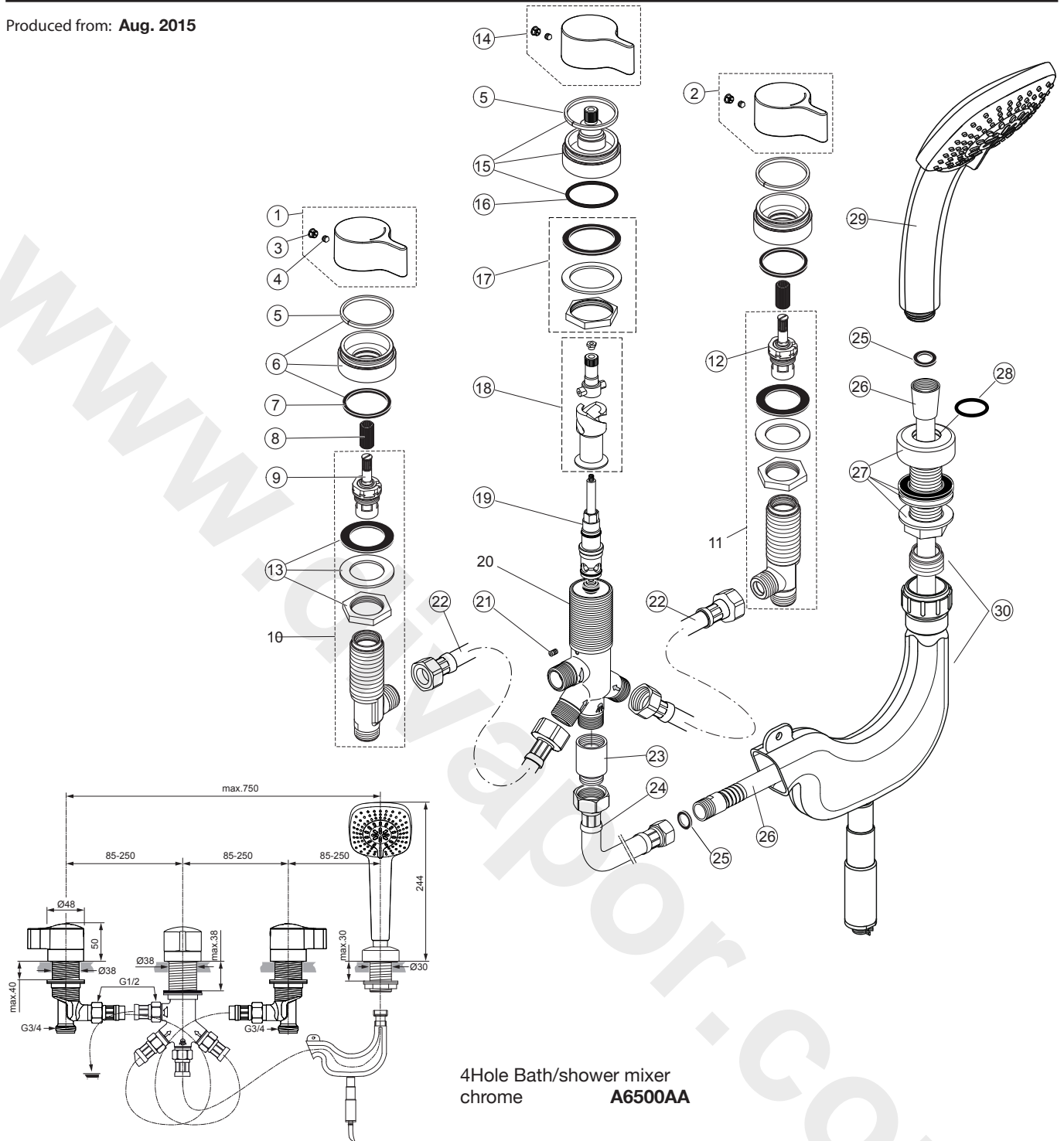


Produced from: Aug. 2015



Pos.	Description	Part-Number	Qty.	Pos.	Description	Part-Number	Qty.
1	Handle w. Logo Sottini - red	A 861 009 AA	1 Set	17	Fixation-set Diverter	A 963 026 NU*	1 Set
2	Handle w. Logo Sottini - blue	A 861 010 AA	1 Set	18	Spindle complete	A 860 452 NU	1 Set
3	Handle cap	A 960 396 AA	1 pcs	19	Diverter unit	A 860 453 NU	1 pcs
4	Thread pin M5x5 DIN914	A 961 268 NU	2 pcs	20	Body Diverter valve		
5	Gliding f. Handle	A 962 143 NU*	1 pcs	21	Thread pin M4x7 SW2	A 962 371 NU	1 pcs
6	Escutcheon with washer	A 961 864 AA	1 Set	22	Flex. hose G1/2 x G1/2	H 960 312 NU	1 pcs
7	Washer Ø 41 x 34 x 3	A 960 499 NU	1 pcs	23	Non-return valve complete	H 960 184 NU	1 pcs
8	Handle adapter	N 042 677 NU	2 pcs		Non-return valve DW15	A 962 594 NU	2 pcs
9	Headwork (hot side)	A 960 462 NU	1 pcs	24	Flex. hose G1/2 x M15x1	H 960 185 NU	1 pcs
10	Side valve hot complete			25	Washer	A 961 817 NU	5 pcs
11	Side valve cold complete			26	Shower hose G1/2xM15x1	H 960 440 AA	1 pcs
12	Headwork (cold side)	A 961 010 NU	1 pcs	27	Holder cpl. f. Handshower	A 962 061 AA	1 Set
13	Fixation-set Side valve	A 963 026 NU*	1 Set	28	O - Ring Ø 22 x 3	A 960 239 NU	1 pcs
14	Handle Diverter w/o Logo	A 962 059 AA	1 Set	29	Handshower complete	F 961 048 AA	1 pcs
15	Escutcheon complete	A 962 060 AA	1 Set	30	Hand-shower Drainage	F 961 079 NU	1 Set
16	O - Ring Ø37,77 x 2,62	A 962 574 NU	1 pcs				

* Universal-Set (not all parts needed)