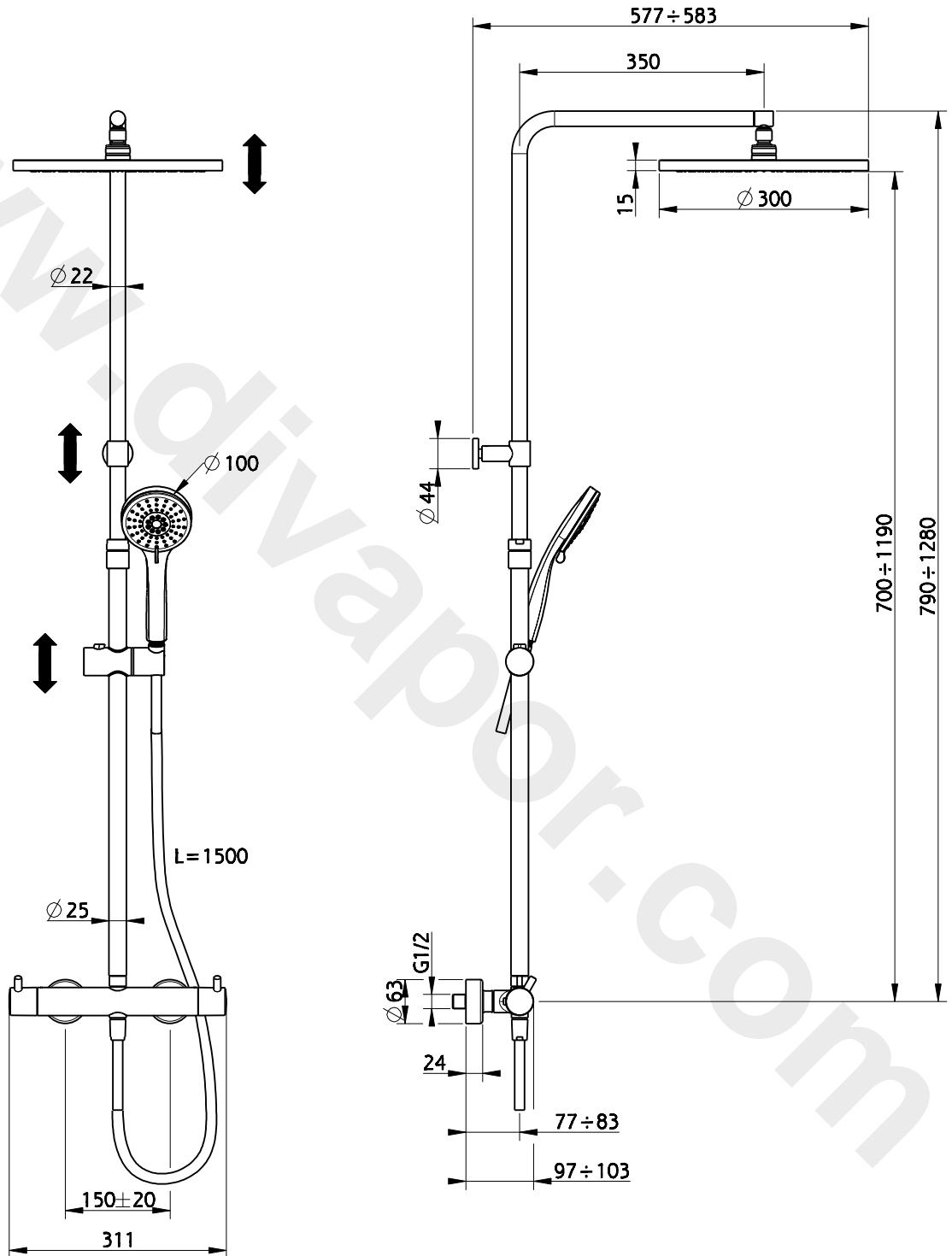


BLACK / TECHNO adjustable

Thermostatic Shower Column



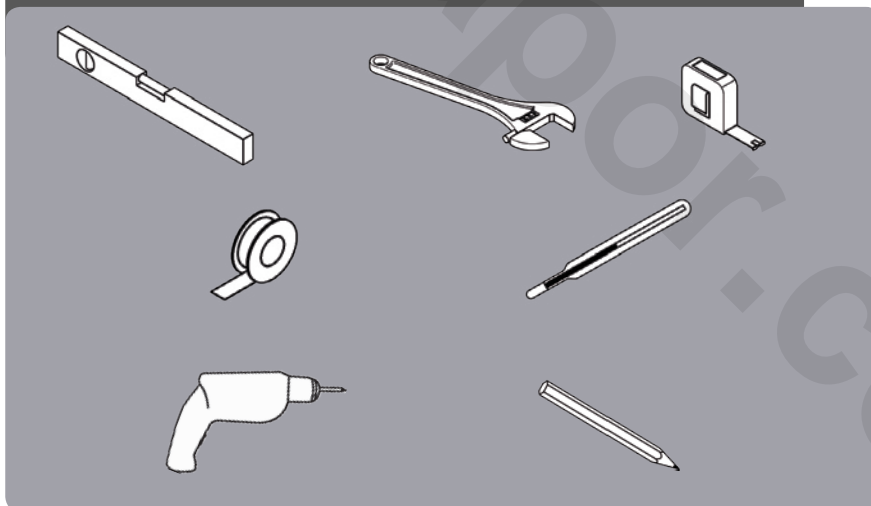


OPERATING CONDITIONS

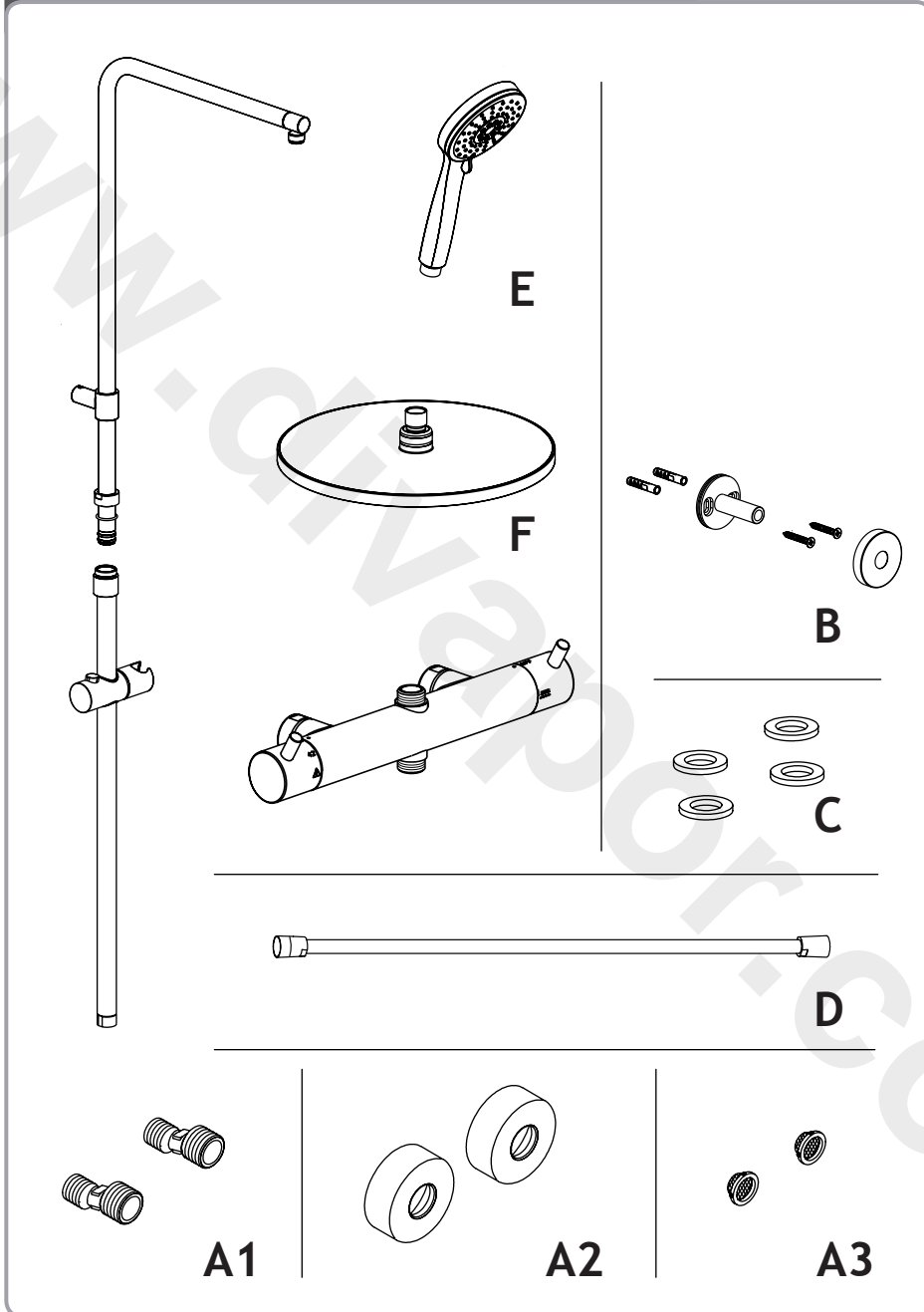
- Minimum dynamic pressure.....1 bar
- Recommended working pressure (static).....3 bar
(ATTENTION: when pressure exceeds 5 bar, the installation of a pressure reducer is recommended)
- Maximum working pressure (static).....5 bar
- Maximum test pressure (static).....16 bar
- Maximum hot water temperature.....80 °C
- Recommended hot water temperature.....65 °C (for safety and energy saving)

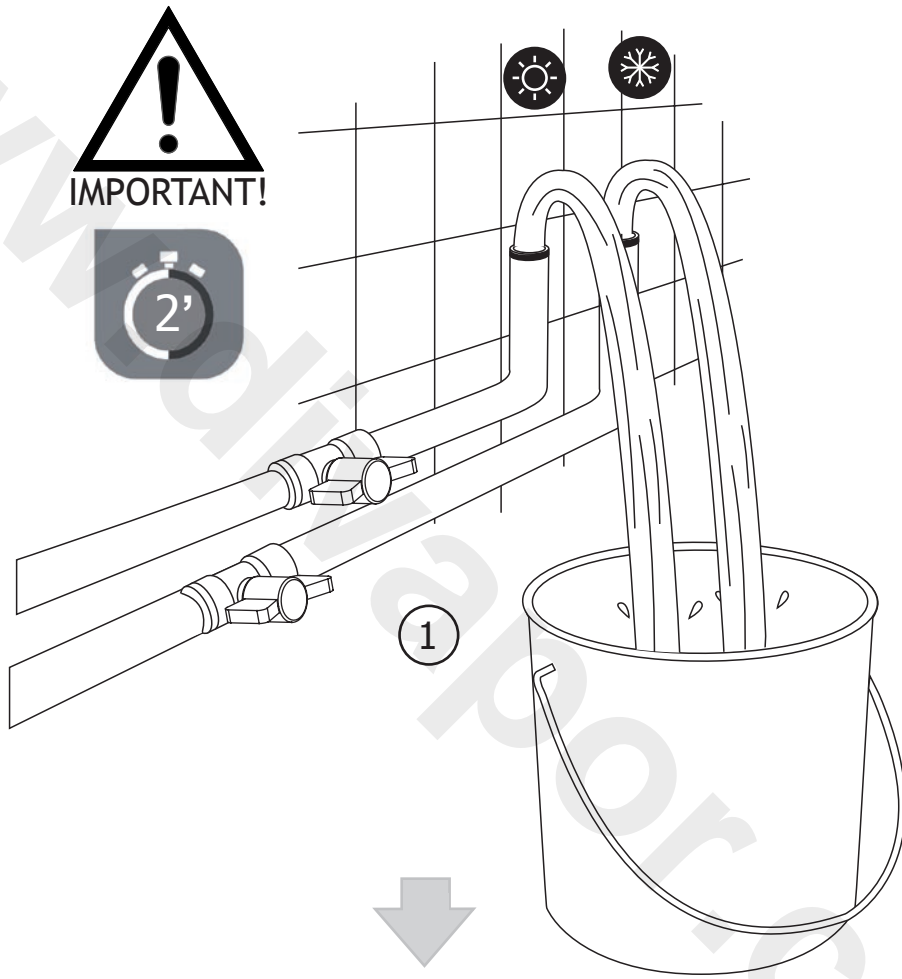


Not included / Non inclus / δεν συμπεριλαμβάνονται / Não incluído / Non incluso / brak w zestawie
no incluido / не входит до комплекта / neinclus / dahil değildir / Не входит в комплект

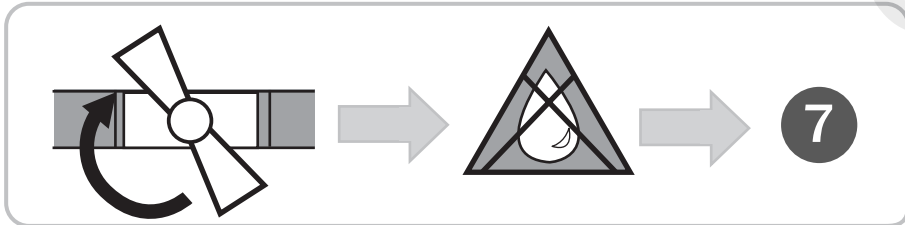


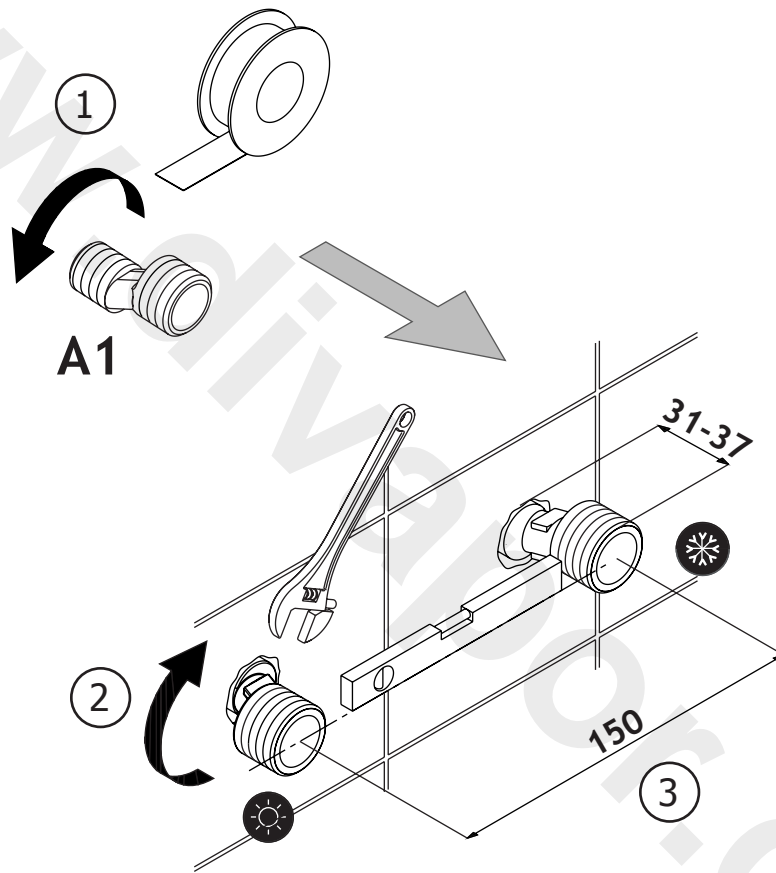
Included / inclus / συμπεριλαμβάνονται / incluido / incluso / W zestawie
incluido / входит до комплекты / inclus / dahildir / входит в комплект

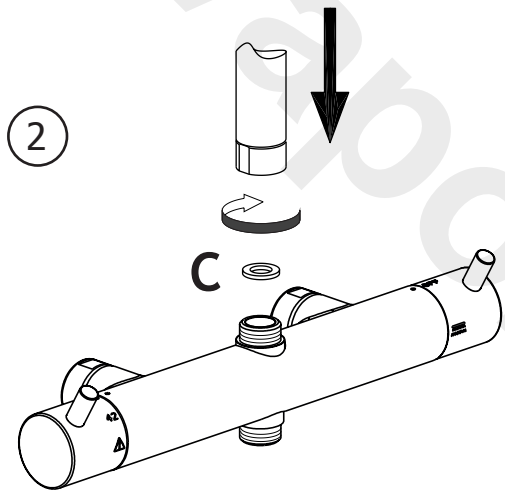
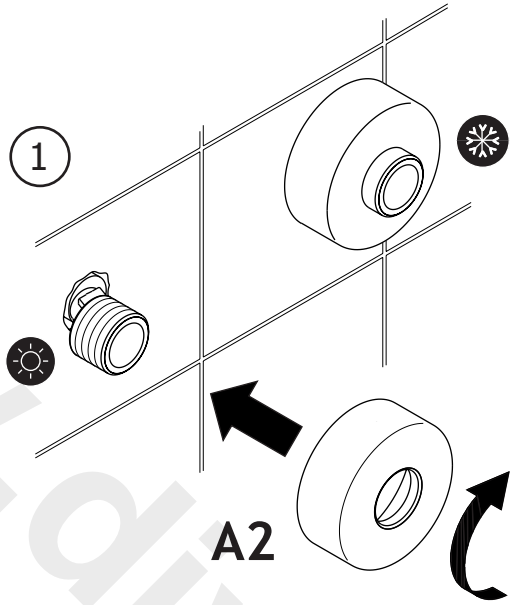


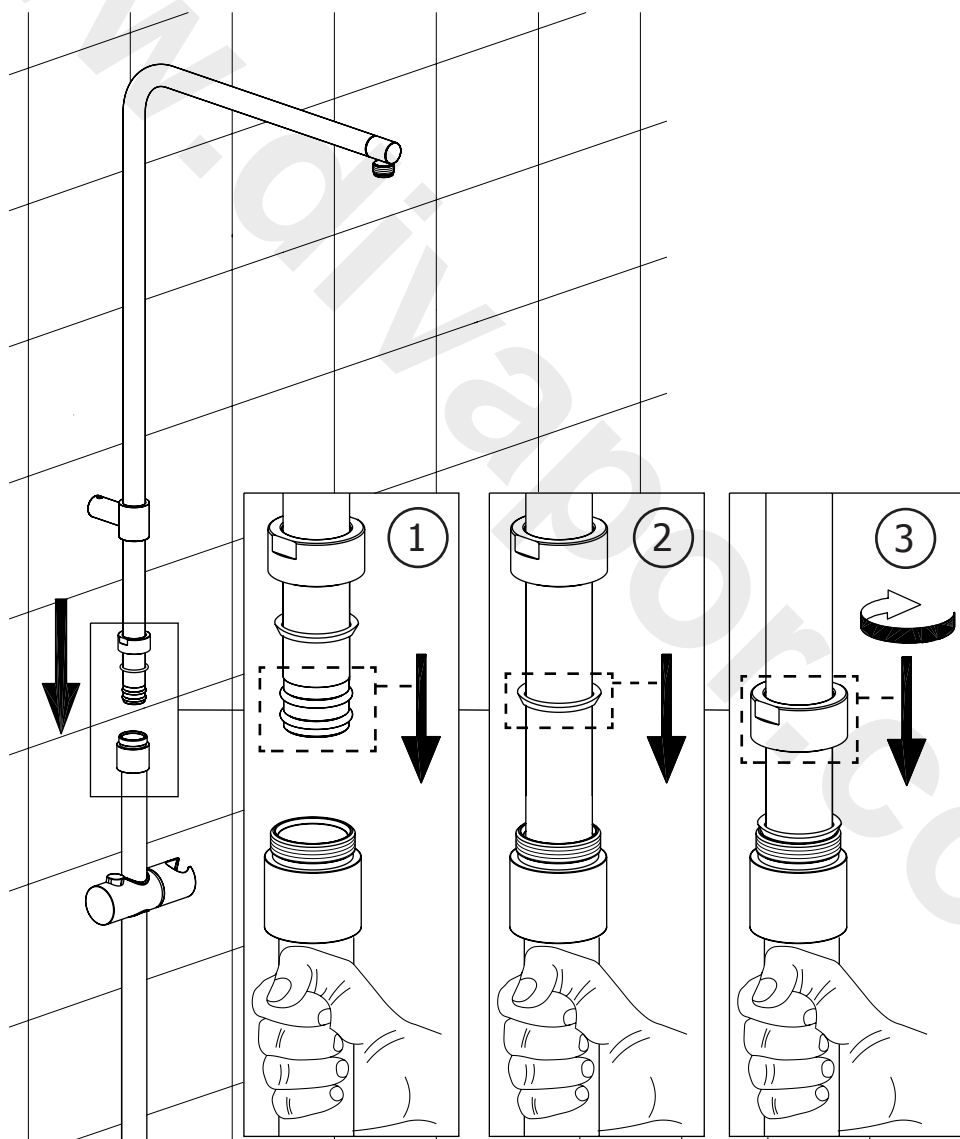


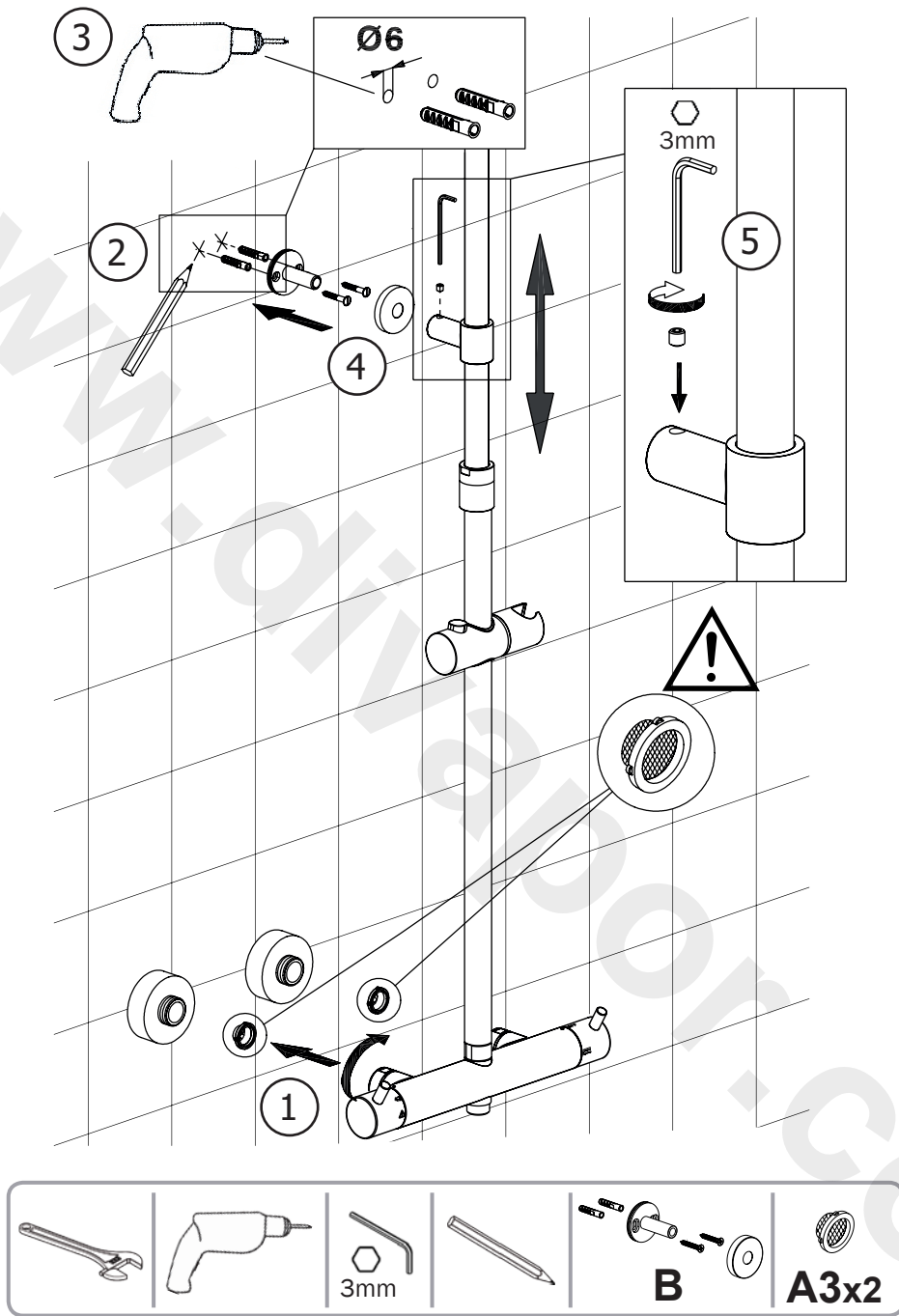
2

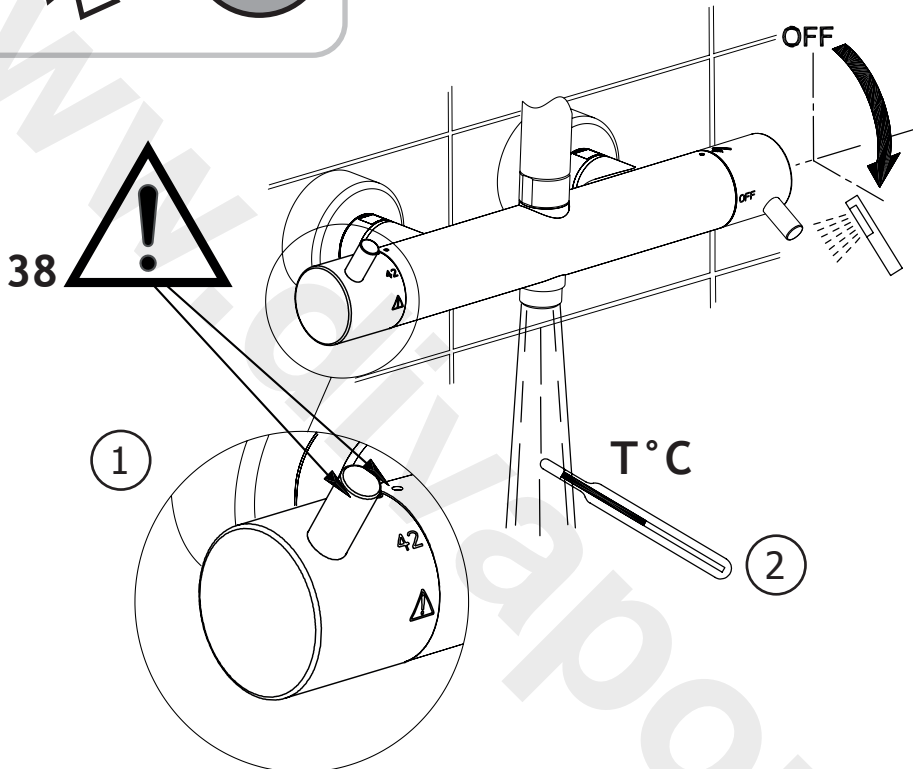
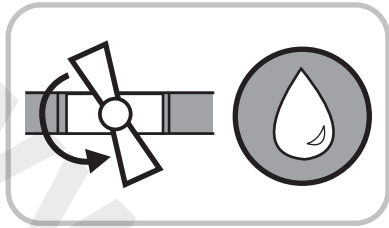






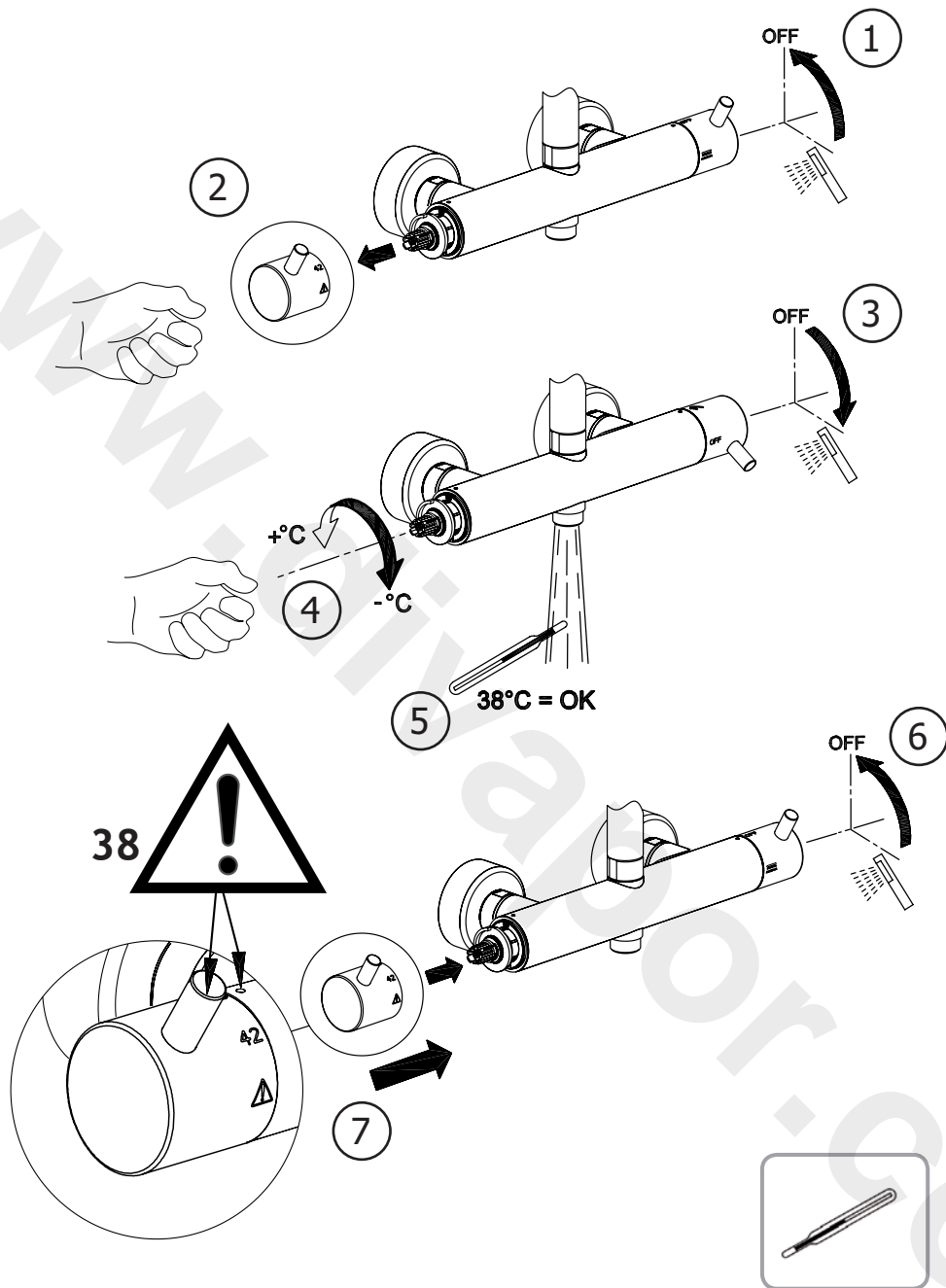




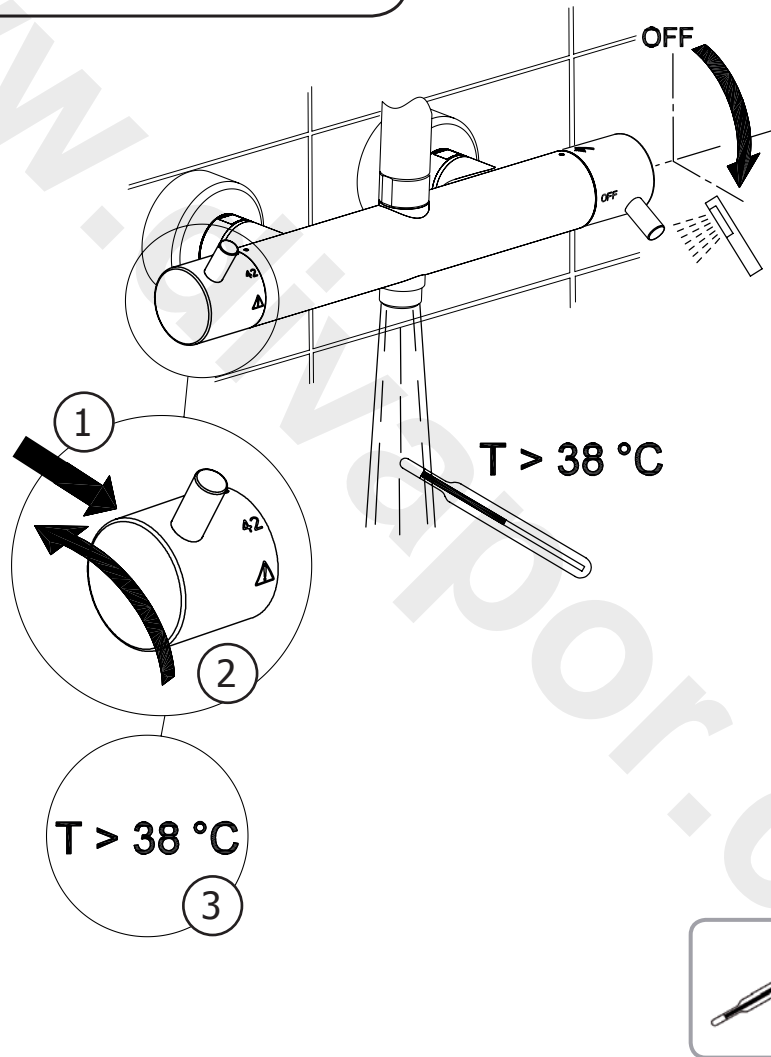


③ $T^{\circ}\text{C} \cong 38^{\circ}\text{C} \rightarrow \text{OK} \rightarrow 13$
 $T^{\circ}\text{C} \neq 38^{\circ}\text{C} \rightarrow 12$



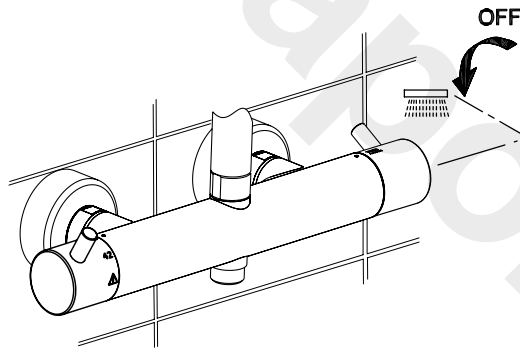
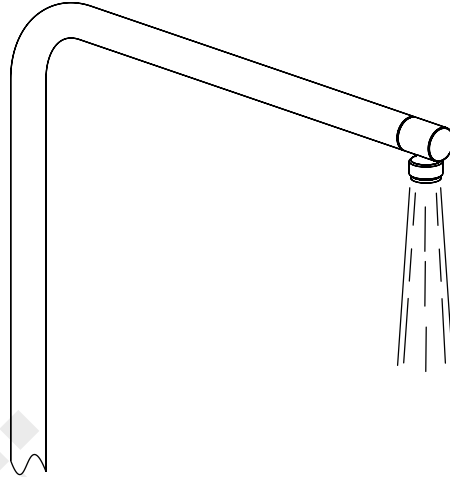


Fonction 38 SafeStop
Función 38 SafeStop
Funzione 38 SafeStop
38 SafeStop Funktion
38 SafeStop Function



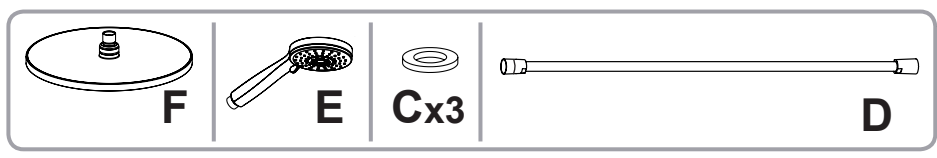
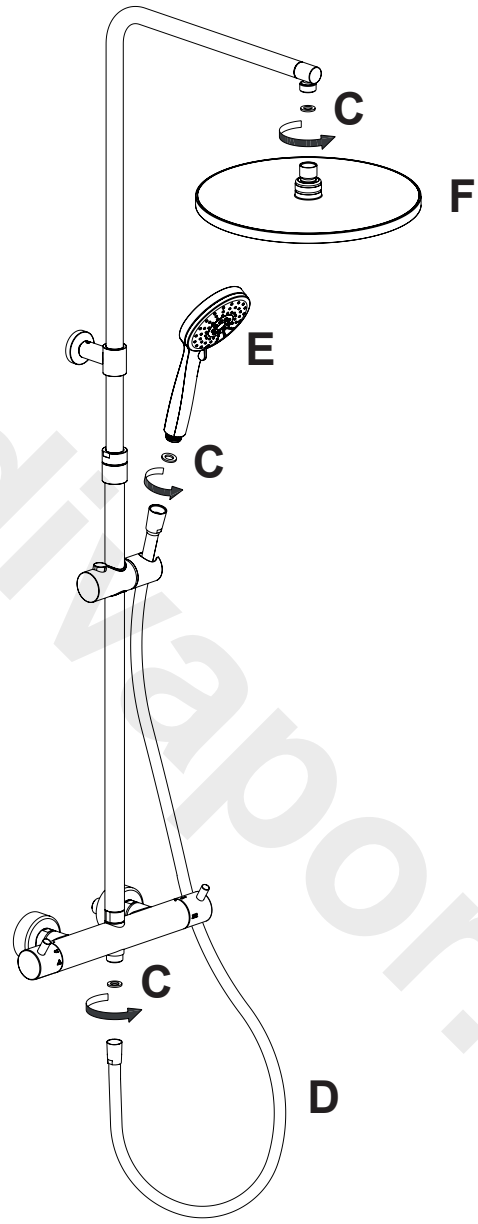
**Code: 780TH-614
780TH-625**

technical specifications



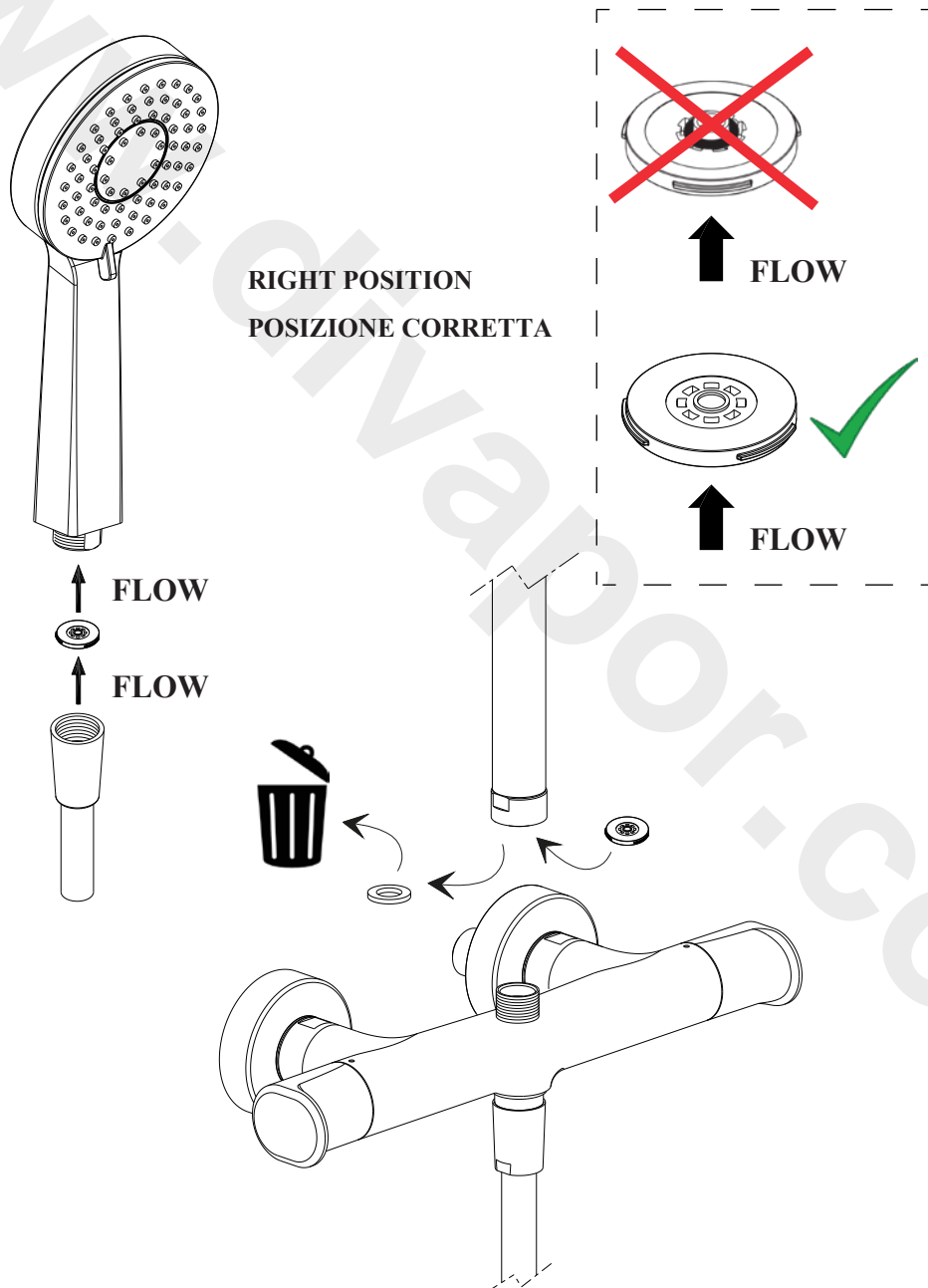
www.cifial.co.uk
cifialuk@btconnect.com

dimensions mm

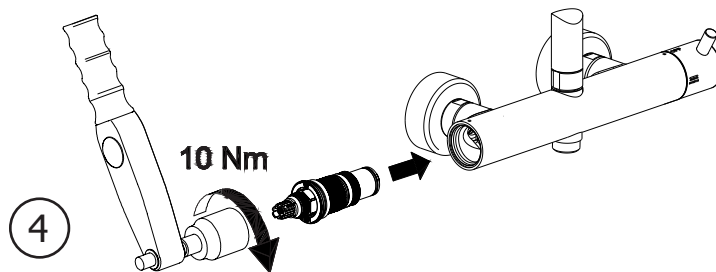
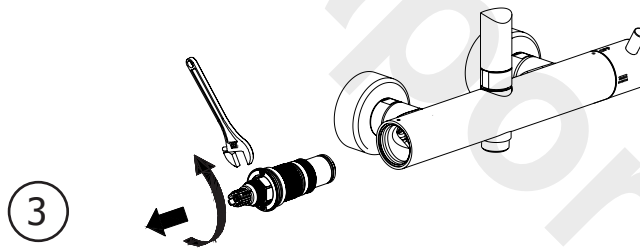
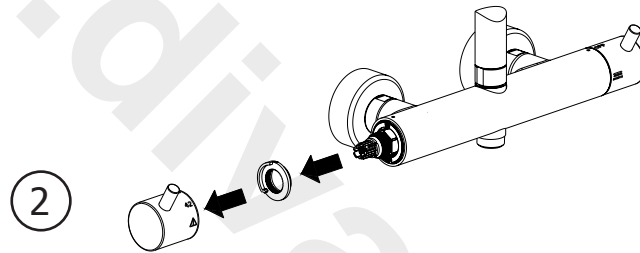
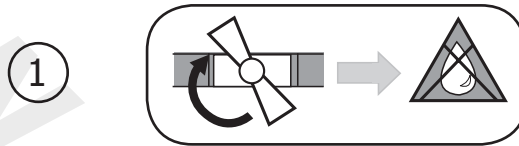
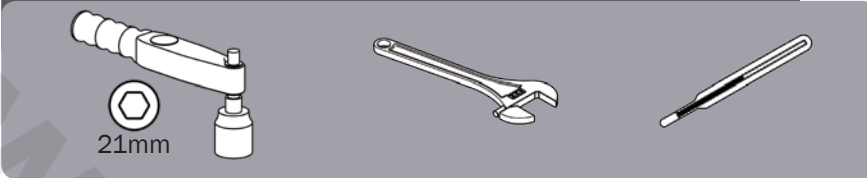


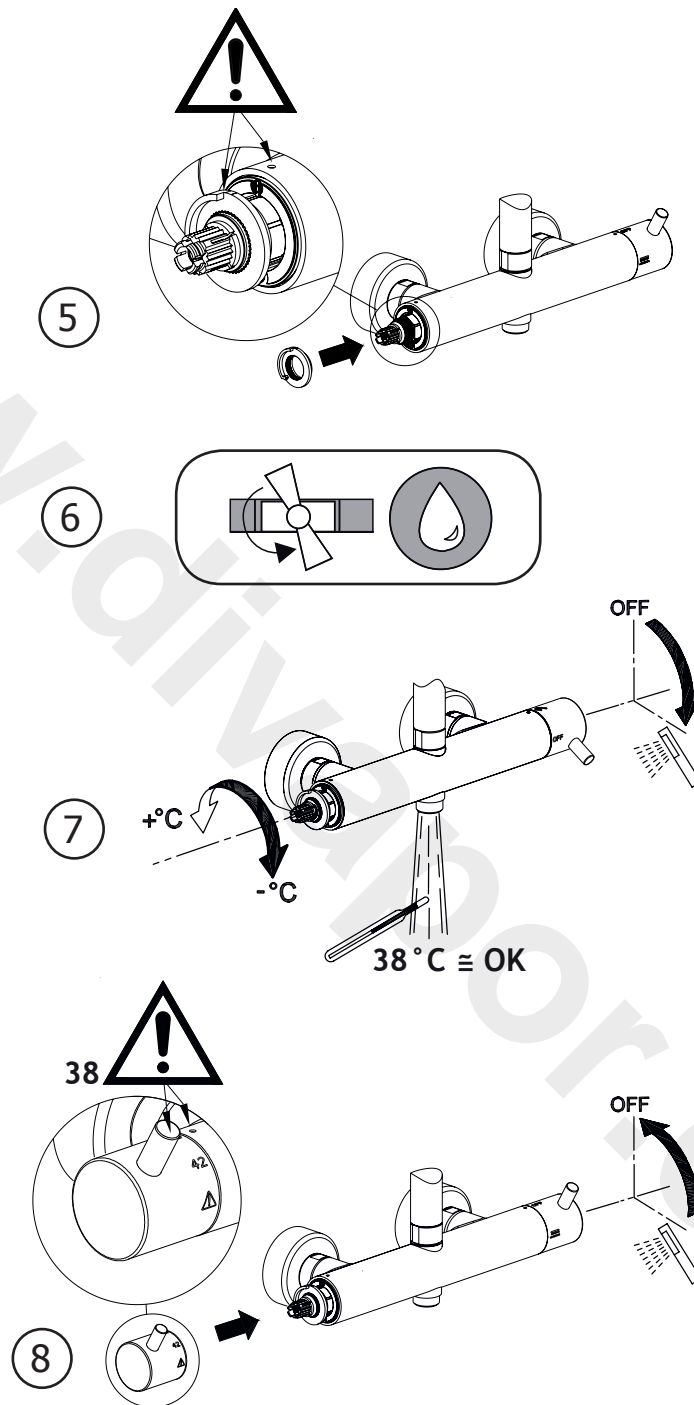
ATTENZIONE: IL FLUSSO D'ACQUA DEVE COLPIRE PER PRIMO L'O-RING

WARNING: THE WATER FLOW MUST HITS O-RING FIRST



Not included / Non inclus / δεν συμπεριλαμβάνονται / Não incluído / Non incluso / brak w zestawie
no incluido / не входит до комплекту / neinclus / dahil değildir / Не входит в комплект







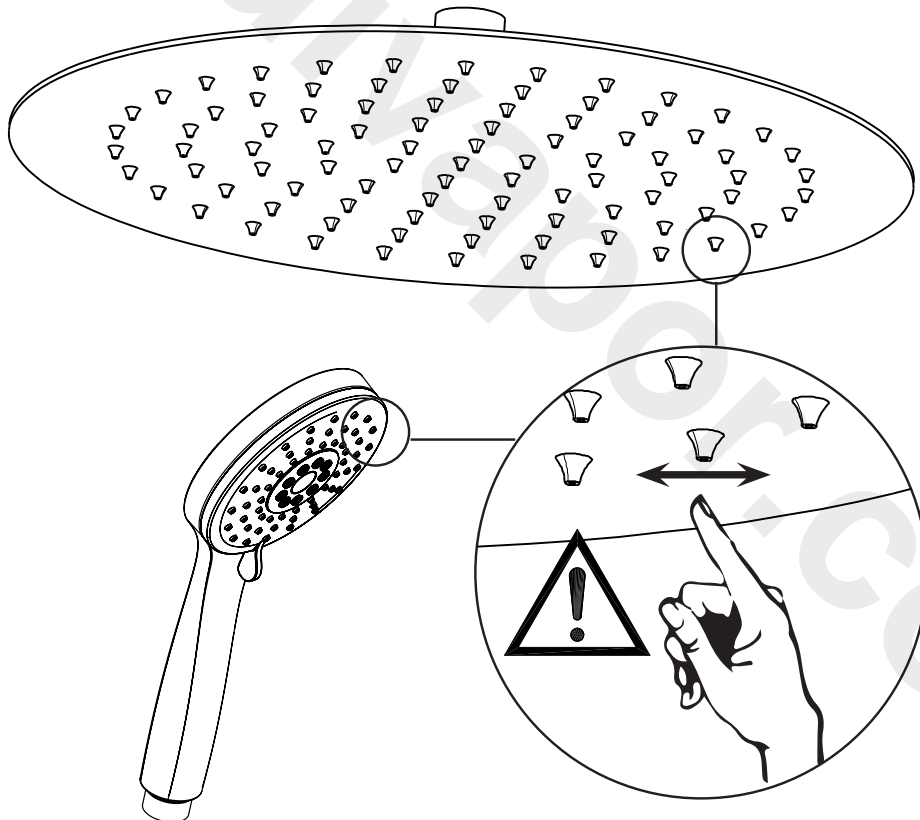
Pressione dinamica minima di utilizzo consigliata 1,5 bar
Pulire regolarmente gli ugelli

Minimum Dynamic Pressure Suggested 1,5 bar
clean the nozzles periodically

Pression dynamique minimum recommandée 1,5 bar
Nettoyer régulièrement les picots

Empfehlender min. dymanischer Nutzungsdruck 1,5 Bar
Düsen regelmäßig reinigen

Presión dinámica mínima de trabajo recomendada 1,5 bar
Limpiar regularmente las salidas de agua anti-cal





**UTILISER UN CHIFFON OU DU TISSU
POUR PROTÉGER LES ÉCROUS DE
FIXATION LORS DU SERRAGE**

**UTILIZAR UN PAÑO O TRAPO SUAVE
PARA PROTEGER LAS TUERCAS
DURANTE EL MONTAJE**

**USARE UN PANNO O DEL TESSUTO
PER PROTEGGERE LE CALOTTE
DURANTE IL SERRAGGIO**

**USE SOFT CLOTH OR TISSUE
TO PROTECT UNION NUTS WHEN
TIGHTENING**

**VERWENDEN SIE EIN TUCH,
UM DIE MUTTER BEIM ANZIEHEN
ZU SCHUTZEN**