

### Thermostatic Mixing Valve TMV2 & TMV3

#### Standard Tail Piece Connections - Code AI090815 (15mm) & AI090822 (22mm)

1. Isolate the valve from the hot and cold water supplies.
2. Unscrew the compression inlet joint and union tail joint to remove the union tail housing from the pipework.
3. Remove and clean the filter that contained within the hot and cold water inlet tailpieces.
4. Remove and clean the insert check valves, which are contained within the hot and cold inlet housings.
5. If any of the filters or check valves are damaged they must be replaced by components supplied in the service kit.

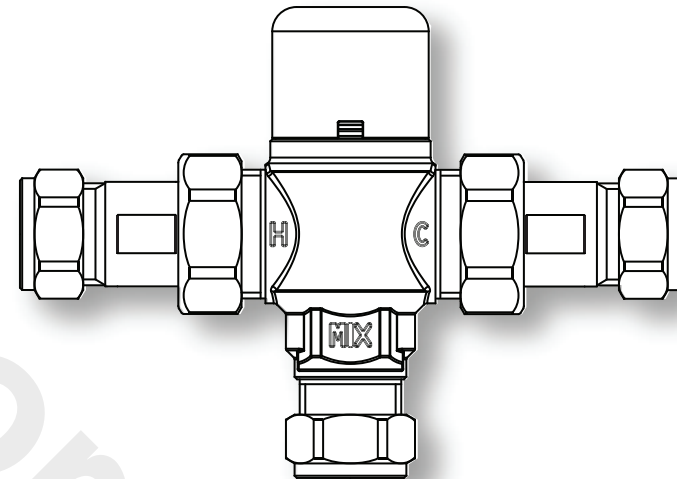
#### MX Option Tail Piece Connections - Code AI0496BAG (15mm) & AI050SBAG (22mm)

1. Isolate the valve from the hot and cold water supplies.
2. Remove the MX access filter cap using a suitably sized spanner.
3. Remove and clean the filter screens contained within the body of the MX body.
4. Unscrew the compression inlet joint and MX tailpiece union joint to remove the MX body from the pipework.
5. Remove and clean the insert check valves, which are contained within the hot and cold MX bodies.
6. If any of the filters or check valves are damaged they must be replaced by components supplied in the service kit.

#### Internal Component Service Kit - Code 60102XX

1. Isolate the valve from the hot and cold water supplies.
2. Remove the cap from the top of the valve.
3. Remove the temperature locking ring from the temperature adjustment spindle.
4. Using a suitably sized spanner, unscrew the valve head assembly from the main body taking care that the head assembly does not spring off.
5. Remove the thermostat and the internal shuttle from the valve body.
6. Clean thoroughly all components to remove any debris or scale, which may have accumulated.

### Thermostatic Mixing Valve TMV2 & TMV3

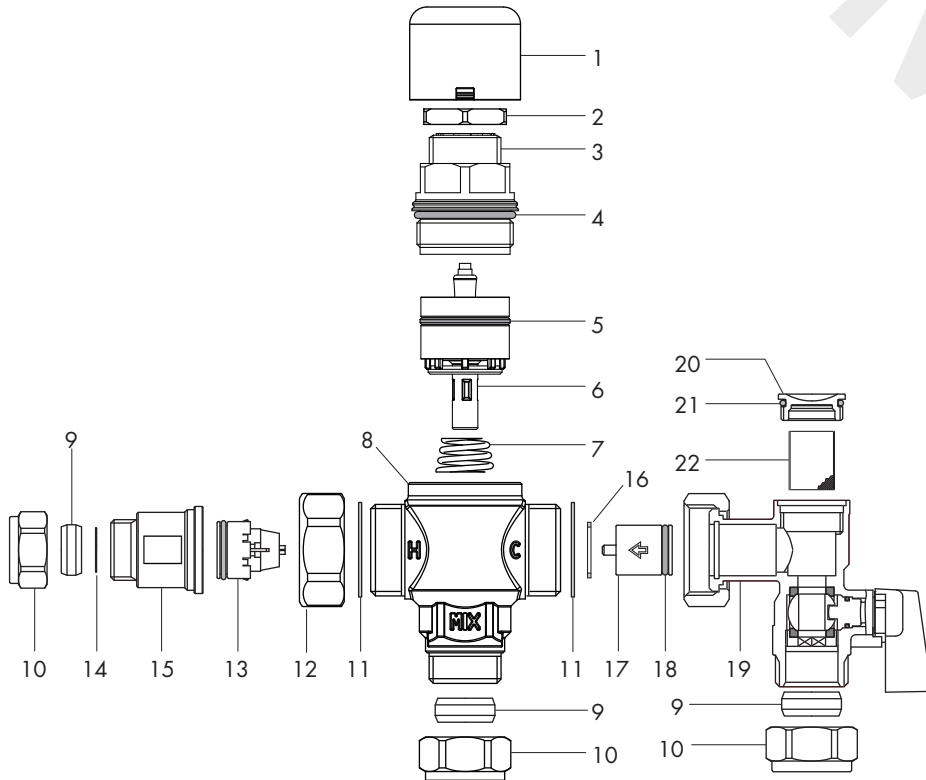


Note: These servicing instructions are for use with product codes 40015CP, 40022CP, 400MX15CP and 400MX22CP

### Thermostatic Mixing Valve TMV2 & TMV3

The following instructions should be followed in conjunction with the Installation, Commissioning and Servicing instruction supplied with the valve. These instructions cover the following products;

- 40015CP (15mm) & 40022CP (22mm) Standard 'T' Pattern TMV2/TMV3 Valve.
- AI0496BAG (15mm) & AI0503SBAG (22mm) MX Isolating Valve (Pair).
- AI090815KIT (15mm) & AI090822KIT (22mm) Standard Check Valve and Filter Service Kit.
- AI0496KIT (15mm) & AI0503SKIT (22mm) MX Check Valve and Filter Service Kit.
- 60102XX (15mm) & (22mm) Internal Component Service Kit.



### Thermostatic Mixing Valve TMV2 & TMV3

Item	Description	Quantity per Kit		
		Standard Tail Pieces 15 & 22mm	MX Tail Pieces 15 & 22mm	Internal Components 15 & 22mm
	Service Kit Code	AI090815 KIT AI090822KIT	AI0496KIT AI0503SKIT	60102XX
1	Cap			
2	Temperature Locking Ring			
3	Valve Head Assembly			
4	Valve Head Assembly 'O' Ring			1 off
5	Shutter 'O' Ring			1 off
6	Thermostat & Shuttle			1 off
7	Spring			1 off
8	Valve Body			
9	Compression Olive		2 off	
10	Compression Nut		2 off	
11	Union Joint Gasket	2 off	2 off	
12	Union Nut			
13	Check Valve Cartridge	2 off		
14	Inlet Tail Filter	2 off		
15	Inlet Tail Housing			
16	Check Valve Retaining Ring		2 off	
17	MX Check Valve Cartridge		2 off	
18	MX Check Valve 'O' Ring		2 off	
19	MX Inlet Tail Housing		2 off	
20	MX Filter Access Cap		2 off	
21	MX Filter Access Cap 'O' Ring		2 off	
22	MX Filter Screen		2 off	
23	Instruction Leaflet (Not Shown)	1 off	1 off	1 off