

Ecostat

Single lever shower mixer S pressure balance for concealed installation

Finish: **Chrome** Article Number: **04233000**



Description

product features

- 1 function
- temperature and volume control for 1 outlet
- maximum flow rate at 3 bar: 20,6 l/min
- pressure control and volume control in one unit
- bypass for use with diverter-type tub spouts
- temperature limitation adjustable
- suitable for continuous flow water heaters
- connection type: basic set

Certificates / Sustainability



Product image



Ecostat

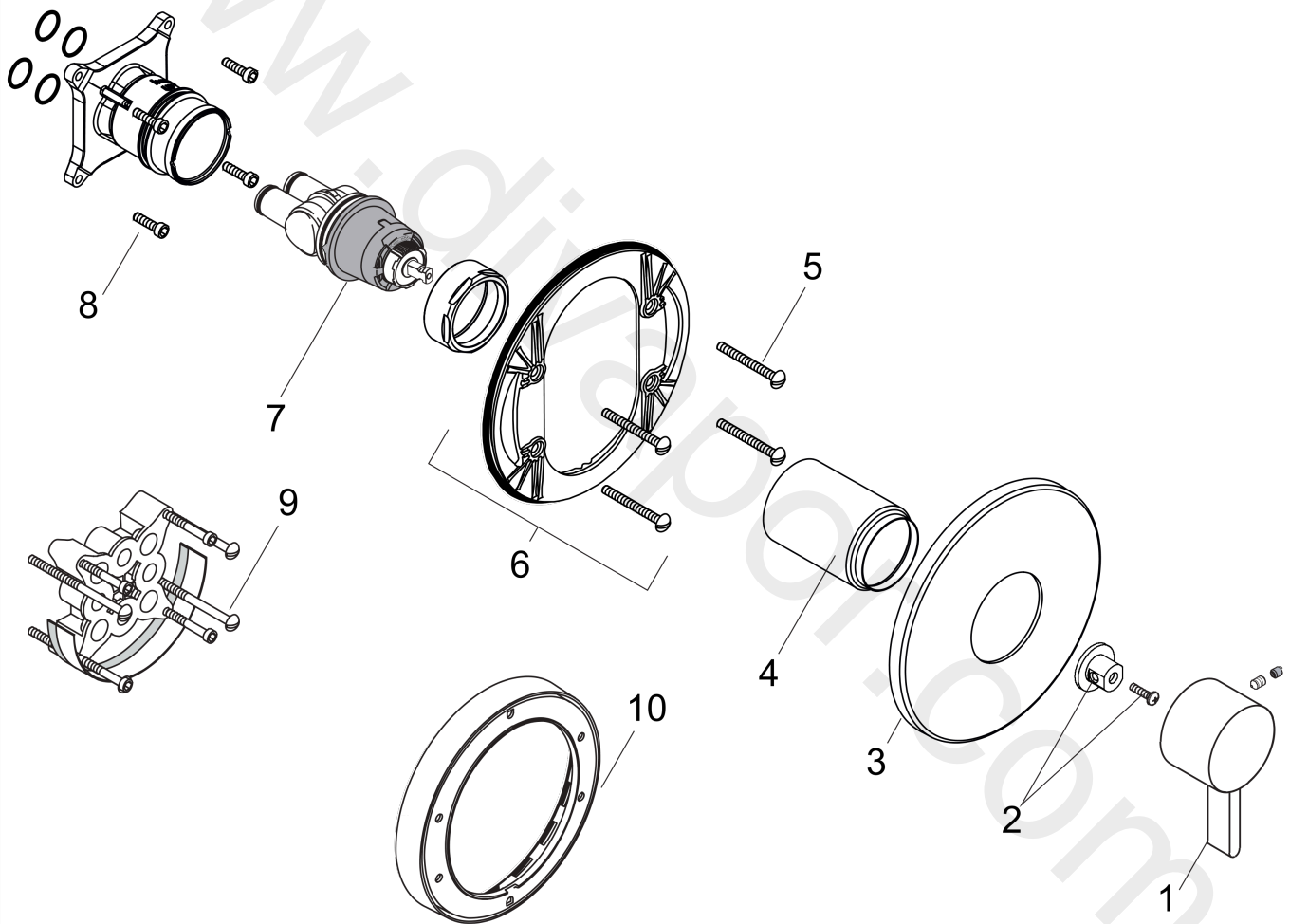
Single lever shower mixer S pressure balance for concealed installation

Finish: **Chrome** Article Number: **04233000**



Exploded Drawing

Year of production: >05/10



Ecostat**Single lever shower mixer S pressure balance for concealed installation**Finish: **Chrome** Article Number: **04233000****Spare part list**

Year of production: >05/10

Pos.	Description	Article Number	Price	PU
1	handle	88763000	£ 79,00	1
2	adapter for handle	92756000	£ 16,10	1
3	escutcheon	88760000	-	1
4	sleeve	88765000	-	1
5	set of fixing screws	96454000	£ 9,00	1
6	sub plate	96447000	£ 51,00	1
7	cartridge, assy	88727000	£ 62,05	1
8	set of screws	96525000	£ 9,00	1
9	extension 25 mm	13595000	£ 75,00	1
10	extension 22 mm (Ø 170 mm)	13596000	£ 72,00	1