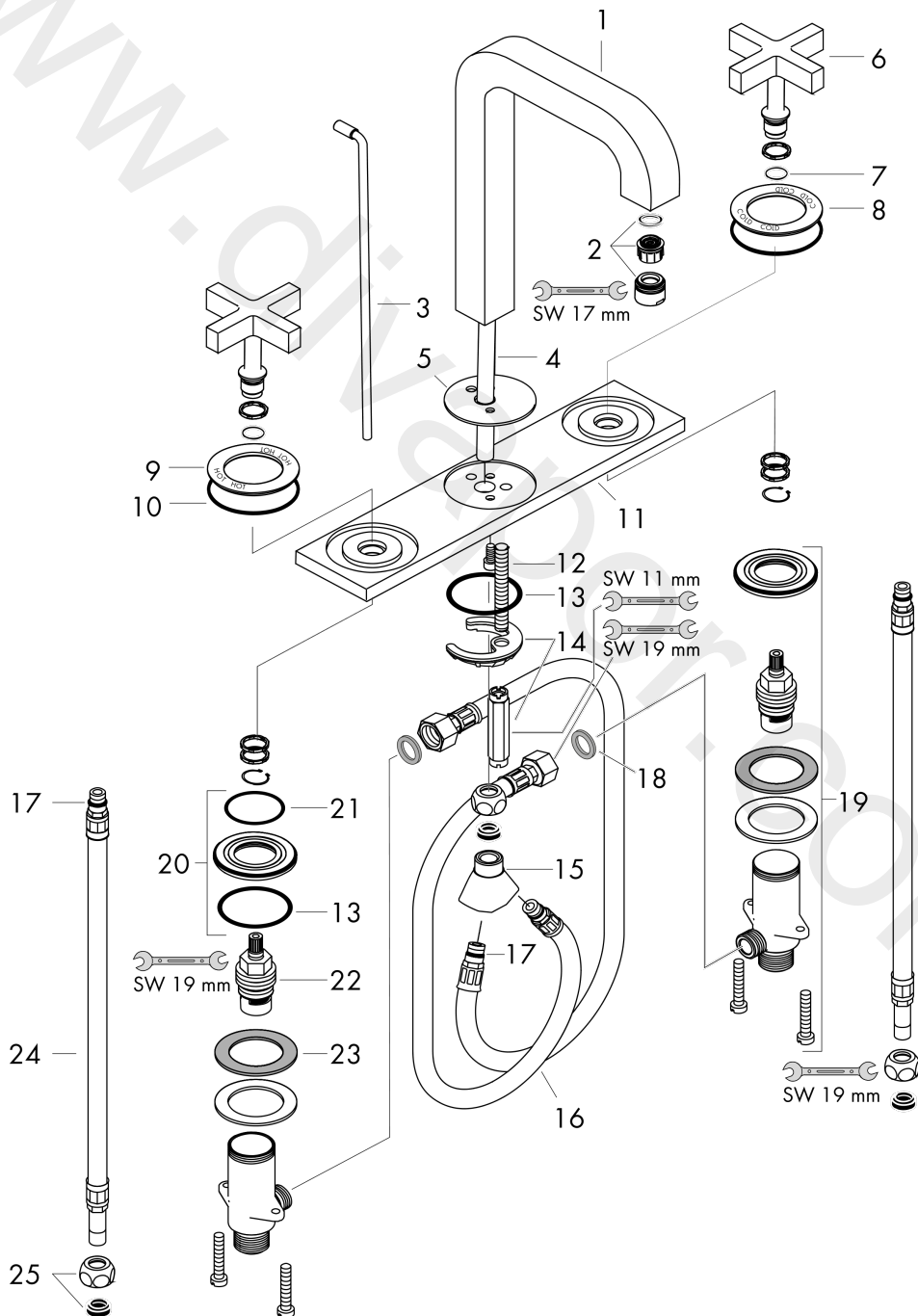


AXOR Citterio
3-hole basin mixer 170 with spout 140 mm, cross handles, plate and pop-up waste set
 Surfaces: Article Number: **39134000**



Exploded Drawing

Year of production: **04/03 - 12/09**



AXOR Citterio

3-hole basin mixer 170 with spout 140 mm, cross handles, plate and pop-up waste set

Surfaces: Article Number: **39134000**



Spare part list

Year of production: **04/03 - 12/09**

| Pos. | | Article Number | Price | PU |
|------|-----------------------------------|----------------|----------|----|
| 1 | spout 165 mm | 96674000 | £ 445,00 | 1 |
| 2 | aerator laminar M18x1 (7 l/min) | 96673000 | £ 43,00 | 1 |
| 3 | pop up rod | 96676000 | £ 25,00 | 1 |
| 4 | supply pipe | 95179000 | - | 1 |
| 5 | escutcheon for spout | 97803000 | £ 64,00 | 1 |
| 6 | handle | 39291000 | £ 79,00 | 1 |
| 7 | O-ring 11x1,5 | 98385000 | £ 3,30 | 1 |
| 8 | escutcheon cold water | 96679000 | £ 51,00 | 1 |
| 9 | escutcheon hot water | 96678000 | £ 51,00 | 1 |
| 10 | O-ring 52x1,5 | 98200000 | £ 6,10 | 1 |
| 11 | escutcheon | 96680000 | £ 224,00 | 1 |
| 12 | screw M8 x 68 | 97736000 | £ 6,10 | 1 |
| 13 | O-ring 40x3 | 92634000 | £ 3,30 | 1 |
| 14 | fixing set | 96016000 | £ 35,00 | 1 |
| 15 | hose connection angel | 97753000 | £ 51,00 | 1 |
| 16 | connection hose 450 mm M10x1 G3/8 | 96507000 | £ 43,00 | 1 |
| 17 | O-ring 8x1,75 | 97827000 | £ 3,30 | 1 |
| 18 | sealing set | 95581000 | £ 6,10 | 1 |
| 19 | stop valve cpl. | 97357000 | £ 137,00 | 1 |
| 20 | nut | 92854000 | £ 20,50 | 1 |
| 21 | O-Ring 32x2,5 | 96364000 | £ 25,00 | 1 |
| 22 | shut off unit | 94149000 | £ 35,00 | 1 |
| 23 | lever collar | 97548000 | £ 3,30 | 1 |
| 24 | connection hose 450 mm M10x1 G3/8 | 96507000 | £ 43,00 | 1 |
| 25 | squeezing connection | 94158000 | £ 9,00 | 1 |
| a | pop up waste | 94139000 | £ 96,00 | 1 |
| b | fixation extension 35 mm | 13898000 | £ 79,00 | 1 |