


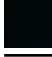



36 860 664



- 190 mm projection
- fixed spout
- circular, air-enriched flow
- hole diameter spout 37 mm
- hole diameter single-lever mixer 57 mm
- rosette for spout Ø 55mm
- rosette for mixer Ø 78mm
- max. flow 5.7 l/min
- lead-free

	Brushed Platinum	36 860 664-06
	Chrome	36 860 664-00
	Dark Chrome	36 860 664-19
	Matte Black	36 860 664-33
	Brushed Chrome	36 860 664-93

**Required miscellaneous**

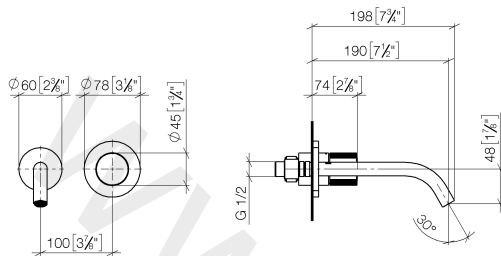


**Concealed wall-mounted single-lever mixer** 35 860 970 90

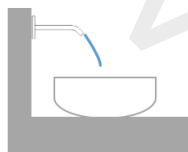
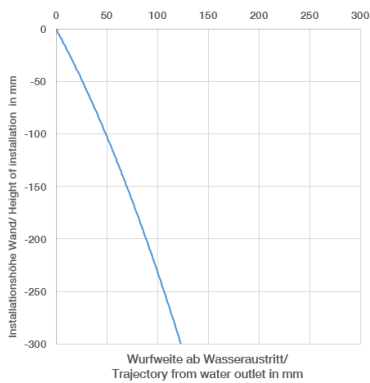
- min. recess depth 80 mm
- max. recess depth 95 mm

36 860 664

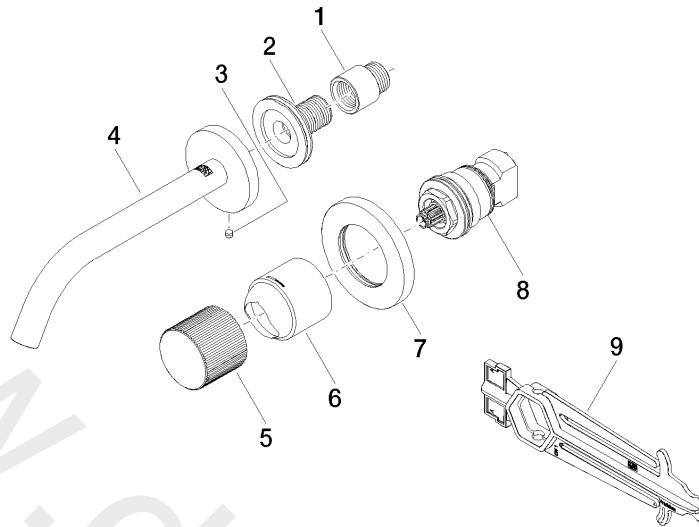
mm [inches]



**Flow rate chart**



36 860 664



**Spare parts list**

No.	Item Number	Name	Quantity used	Delivery time
1	09 24 03 072 10 90	nipple	1	2
2	90 24 03 280 00 90	nipple	1	2
3	09 31 11 112 90	pin	1	60
4	90 28 22 323 00-06	spout	1	10
5	09 20 66 010-06	handle	1	10
6	09 11 02 389-06	cover	1	10
7	90 27 62 011 00-06	rosette	1	10
8	90 90 03 169 02 90	top	1	2
9	09 30 09 064 90	key	1	2