






36 805 660



- 185 mm projection
- fixed spout
- circular, air-enriched flow
- hole diameter 35 mm
- rosette Ø 60 mm
- max. flow 5.7 l/min
- lead-free
- with single-point mounting

	Matte Black	36 805 660-33
	Chrome	36 805 660-00
	Brushed Platinum	36 805 660-06
	Dark Chrome	36 805 660-19
	Brushed Chrome	36 805 660-93

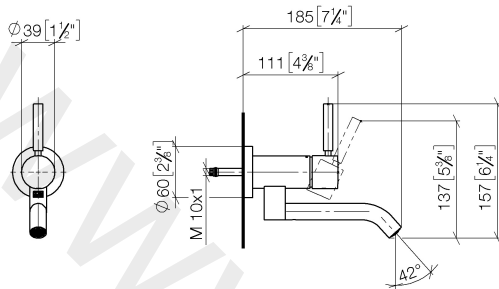
Required miscellaneous



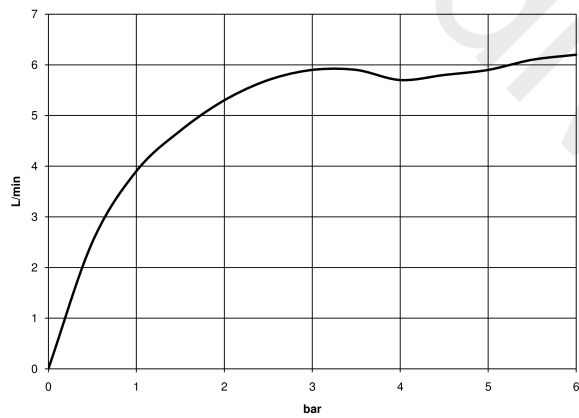
- Concealed wall mounting** 35 050 970 90
- min. recess depth 78 mm
 - max. recess depth 103 mm

36 805 660

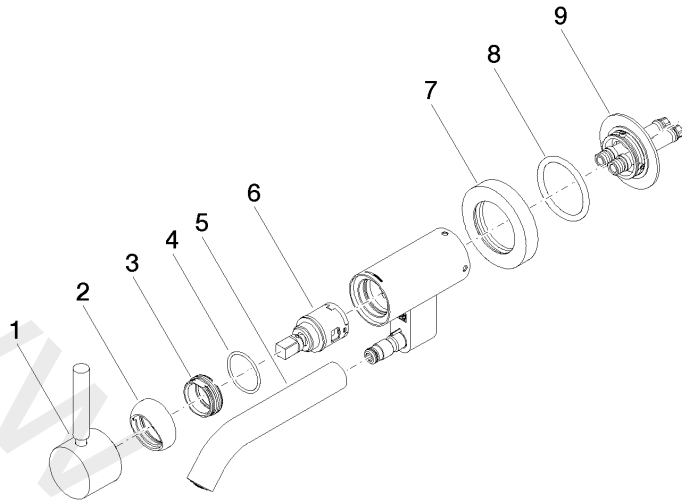
mm [inches]



Flow rate chart



36 805 660



Spare parts list

No.	Item Number	Name	Quantity used	Delivery time
1	90 20 66 030 00-33	handle	1	30
2	09 28 30 043-33	cover	1	30
3	09 24 04 266 90	nut	1	2
4	09 14 10 120 90	seal	1	2
5	90 11 06 217 00-33	spout	1	30
6	90 15 05 042 00 90	cartridge	1	2
7	09 27 89 004-33	rosette	1	30
8	09 14 10 041 90	seal	1	2
9	90 30 11 296 00 90	flange	1	2