
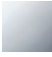

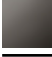



36 804 661



- 160 mm projection
- fixed spout
- circular, air-enriched flow
- hole diameter 60 mm
- rosette Ø 78 mm
- max. flow 5.7 l/min
- lead-free
- with single-point mounting

	Matte Black	36 804 661-33
	Chrome	36 804 661-00
	Brushed Platinum	36 804 661-06
	Dark Chrome	36 804 661-19
	Brushed Chrome	36 804 661-93

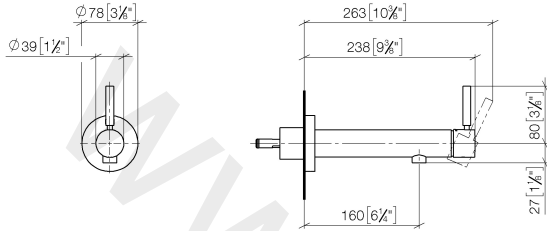
Required miscellaneous



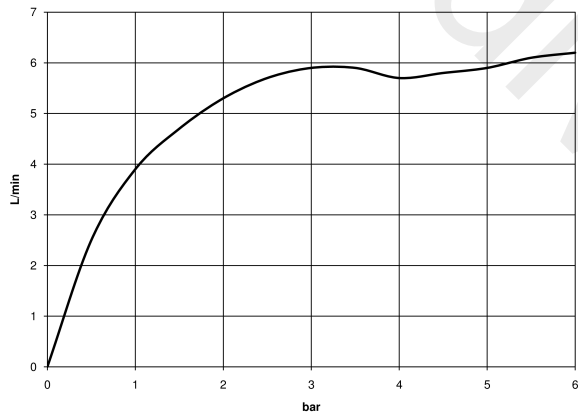
- Concealed wall mounting** 35 003 970 90
- min. recess depth 78 mm
 - max. recess depth 103 mm

36 804 661

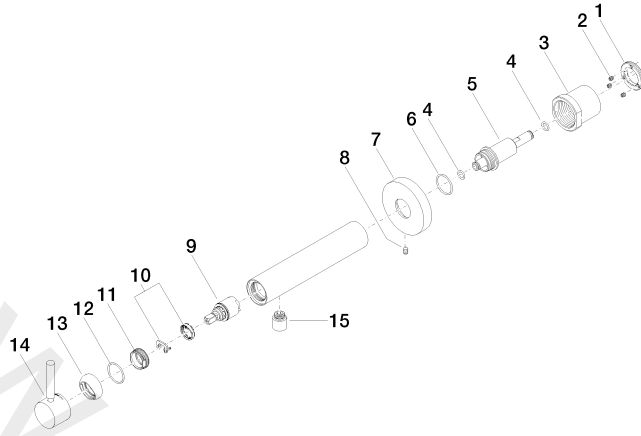
mm [inches]



Flow rate chart



36 804 661



Spare parts list

No.	Item Number	Name	Quantity used	Delivery time
1	09 24 77 002 90	nut	1	2
2	09 31 11 030 90	pin	3	2
3	09 21 02 128 90	sleeve	1	2
4	09 14 10 139 90	seal	2	2
5	09 24 04 210 10 90	nipple	1	2
6	09 14 10 063 90	seal	1	2
7	09 27 88 009-33	rosette	1	30
8	09 31 11 144 90	pin	1	2
9	90 15 05 044 00 90	cartridge	1	2
10	04 28 10 148 00 90	accessories	1	2
11	09 24 04 266 90	nut	1	2
12	09 14 10 120 90	seal	1	2
13	09 28 30 043-33	cover	1	30
14	90 20 66 024 00-33	handle	1	30
15	90 23 01 168 00-33	aerator	1	30