
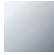
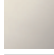
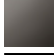





36 501 985



- cover plate 120 x 120 mm
- temperature control handle with safety limit stop at 38°C
- thermostat cartridge

Fits: IMO, MEM, CL.1, CYO

|   |                                   |               |
|---|-----------------------------------|---------------|
|  | Brushed Platinum                  | 36 501 985-06 |
|  | Chrome                            | 36 501 985-00 |
|  | Platinum                          | 36 501 985-08 |
|  | Dark Chrome                       | 36 501 985-19 |
|  | Brushed Durabronze<br>(23kt Gold) | 36 501 985-28 |
|  | Matte Black                       | 36 501 985-33 |
|  | Brushed Dark<br>Platinum          | 36 501 985-99 |

**Required miscellaneous**



**xTOOL Concealed thermostat module without volume control** 35 503 970 90  
 •min. recess depth 95 mm  
 •max. recess depth 160 mm

**Recommended miscellaneous**



**xGRID Attachment set for integrating in the dry wall construction** 12 340 970 90

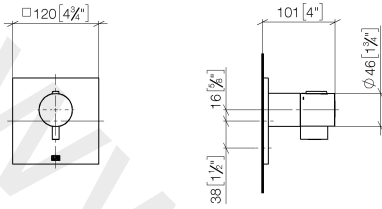
**Required miscellaneous**



**xGRID Installation track 555 mm** 12 360 970 90

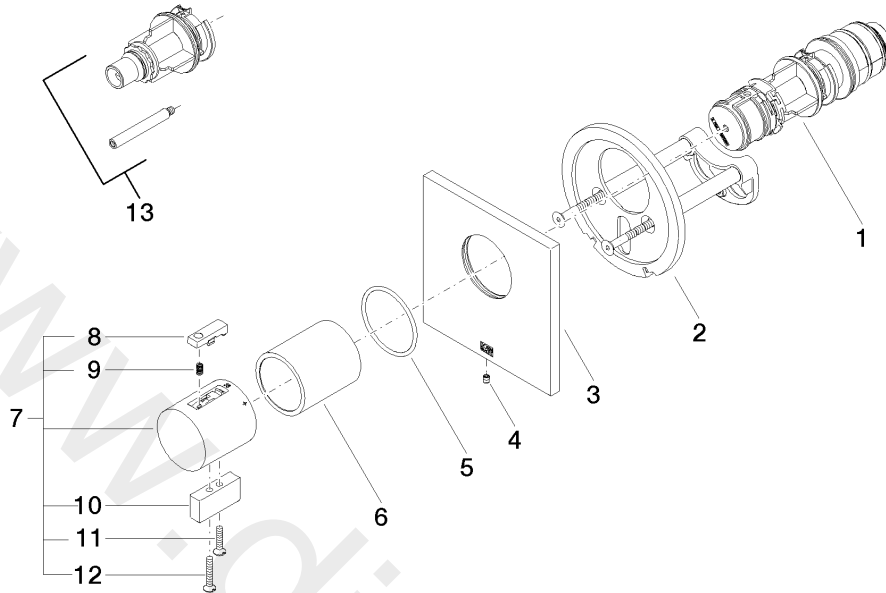
36 501 985

mm [inches]



www.divapor.com

36 501 985



### Spare parts list

| No. | Item Number        | Name            | Quantity used | Delivery time |
|-----|--------------------|-----------------|---------------|---------------|
| 1   | 90 15 02 063 00 90 | cartridge       | 1             | 2             |
| 2   | 90 11 01 196 00 90 | base            | 1             | 2             |
| 3   | 09 11 02 533-06    | cover           | 1             | 10            |
| 4   | 09 31 11 044 90    | pin             | 1             | 2             |
| 5   | 09 14 10 049 90    | seal            | 1             | 2             |
| 6   | 09 21 02 112-06    | sleeve          | 1             | 10            |
| 7   | 04 17 33 006 00-06 | handle          | 1             | 10            |
| 8   | 90 21 33 010 00-13 | handle          | 1             | 2             |
| 9   | 90 16 02 027 00 90 | spring          | 1             | 2             |
| 10  | 09 20 33 006-06    | handle          | 1             | 10            |
| 11  | 09 30 30 159-06    | screw           | 1             | 10            |
| 12  | 09 30 30 160-06    | screw           | 1             | 10            |
| 13  | 12 178 970 90      | Extension 46 mm | 1             | 2             |