

36 426 970



- rotary diverter with volume control and shut-off function
- cover plate Ø 150 mm
- temperature control handle with safety limit stop at 38°C
- hot water temperature limiter, can be preset
- WRAS: 1906098

Fits: TARA, VAIA, META

|   |                                |               |
|---|--------------------------------|---------------|
|    | Matte Black                    | 36 426 970-33 |
|    | Chrome                         | 36 426 970-00 |
|    | Brushed Platinum               | 36 426 970-06 |
|    | Platinum                       | 36 426 970-08 |
|    | Matte White                    | 36 426 970-10 |
|    | Dark Chrome                    | 36 426 970-19 |
|    | Brushed Durabronze (23kt Gold) | 36 426 970-28 |
|    | Brushed Champagne (22kt Gold)  | 36 426 970-46 |
|    | Champagne (22kt Gold)          | 36 426 970-47 |
|   | Brushed Chrome                 | 36 426 970-93 |
|  | Brushed Dark Platinum          | 36 426 970-99 |

Required miscellaneous



**Concealed thermostat with built-in isolators** 35 426 970 90

- min. recess depth 80 mm
- max. recess depth 136 mm

Recommended miscellaneous



**xGRID Attachment set for integrating in the dry wall construction** 12 340 970 90

Required miscellaneous



**Concealed thermostat** 35 425 970 90

- min. recess depth 80 mm
- max. recess depth 136 mm

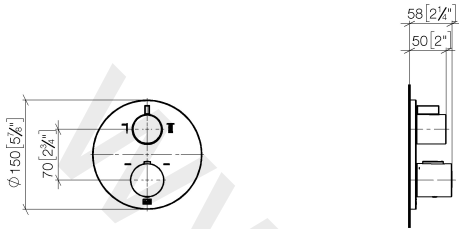
Required miscellaneous



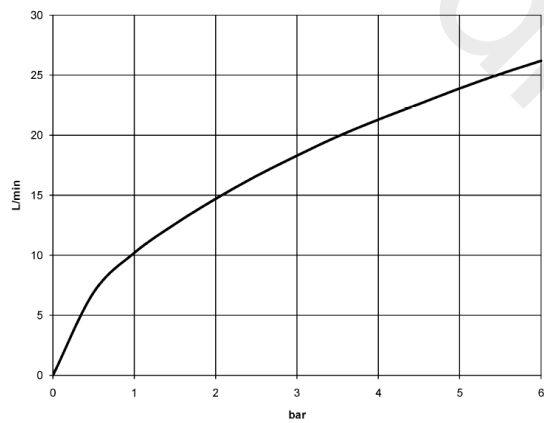
**xGRID Installation track 555 mm** 12 360 970 90

36 426 970

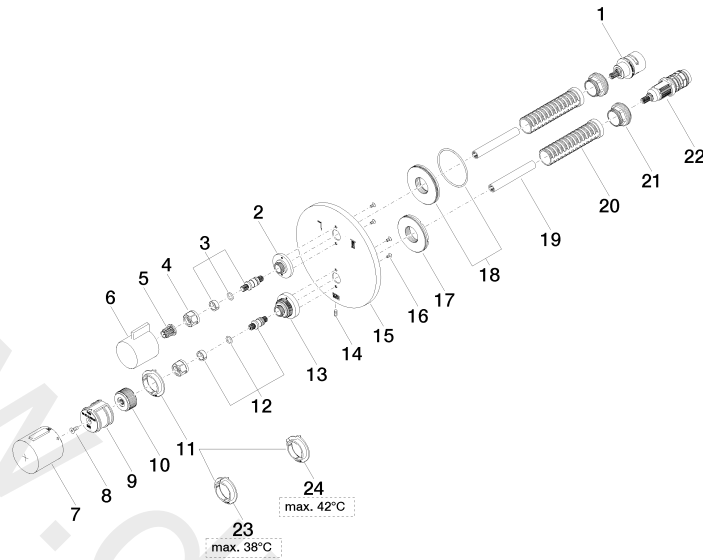
mm [inches]



Flow rate chart



36 426 970



36 426 970

Spare parts list

| No. | Item Number        | Name       | Quantity used | Delivery time |
|-----|--------------------|------------|---------------|---------------|
| 1   | 90 90 03 163 00 90 | diverter   | 1             | 2             |
| 2   | 09 12 12 053-33    | base       | 1             | 30            |
| 3   | 04 29 06 111 00-00 | spindle    | 1             | 60            |
| 4   | 09 23 30 023 90    | nut        | 2             | 2             |
| 5   | 90 12 12 002 00 90 | fixing cap | 1             | 2             |
| 6   | 09 20 67 006-33    | handle     | 1             | 30            |
| 7   | 90 17 33 017 00-33 | handle     | 1             | 30            |
| 8   | 09 30 30 124 90    | screw      | 1             | 2             |
| 9   | 09 12 12 052 90    | base       | 1             | 2             |
| 10  | 09 12 12 054 90    | base       | 1             | 2             |
| 11  | 09 28 10 187 90    | regulator  | 1             | 2             |
| 12  | 04 29 06 024 00-00 | spindle    | 1             | 60            |
| 13  | 09 12 12 051-33    | base       | 1             | 30            |
| 14  | 09 31 11 134 90    | pin        | 1             | 2             |
| 15  | 09 11 02 243-33    | plate      | 1             | 30            |
| 16  | 09 30 30 157 90    | screw      | 4             | 2             |
| 17  | 09 30 01 296 90    | disc       | 1             | 2             |
| 18  | 90 30 01 190 00 90 | disc       | 1             | 2             |
| 19  | 09 23 01 124 90    | sleeve     | 2             | 2             |
| 20  | 09 18 40 077 90    | sleeve     | 2             | 2             |
| 21  | 09 24 04 257 90    | nut        | 2             | 2             |
| 22  | 90 15 02 013 00 90 | cartridge  | 1             | 2             |
| 23  | 09 28 10 188 90    | regulator  | 1             | 2             |
| 24  | 09 28 10 189 90    | regulator  | 1             | 2             |