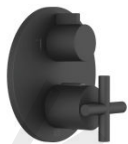


36 426 892



- rotary diverter with volume control and shut-off function
- cover plate Ø 150 mm
- temperature control handle with safety limit stop at 38°C
- hot water temperature limiter, can be preset

	Matte Black	36 426 892-33
	Chrome	36 426 892-00
	Brushed Platinum	36 426 892-06
	Platinum	36 426 892-08
	Matte White	36 426 892-10
	Dark Chrome	36 426 892-19
	Brushed Durabronze (23kt Gold)	36 426 892-28
	Brushed Champagne (22kt Gold)	36 426 892-46
	Champagne (22kt Gold)	36 426 892-47
	Brushed Chrome	36 426 892-93
	Brushed Dark Platinum	36 426 892-99

Required miscellaneous



Concealed thermostat with built-in isolators 35 426 970 90
 •min. recess depth 80 mm
 •max. recess depth 136 mm

Required miscellaneous



Concealed thermostat 35 425 970 90
 •min. recess depth 80 mm
 •max. recess depth 136 mm

Required miscellaneous



Drybox Concealed thermostat 39 426 970 90

Required miscellaneous



xGRID Installation track 555 mm 12 360 970 90

Required miscellaneous



Concealed thermostat with built-in isolators 35 426 970 90
 •min. recess depth 80 mm
 •max. recess depth 136 mm

Required miscellaneous



Drybox Concealed thermostat 39 426 970 90

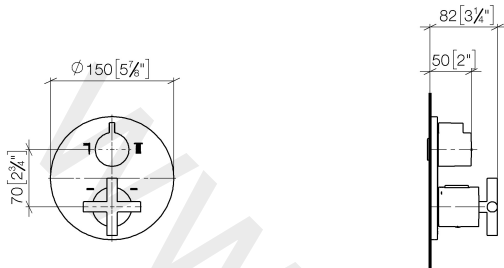
Recommended miscellaneous



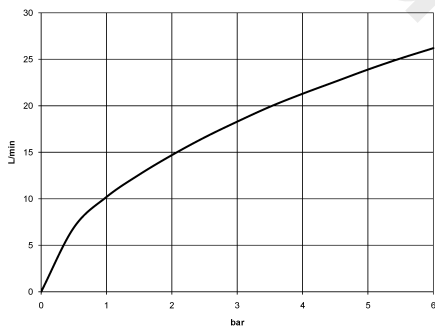
xGRID Attachment set for integrating in the dry wall construction 12 340 970 90

36 426 892

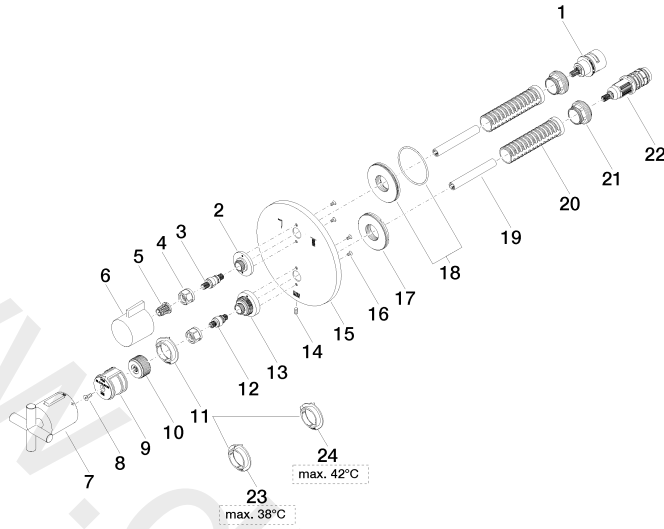
mm [inches]



Flow rate chart



36 426 892



36 426 892

Spare parts list

No.	Item Number	Name	Quantity used	Delivery time
1	90 90 03 163 00 90	diverter	1	2
2	09 12 12 053-33	base	1	30
3	04 29 06 111 00-00	spindle	1	60
4	09 23 30 023 90	nut	2	2
5	90 12 12 002 00 90	fixing cap	1	2
6	09 20 67 006-33	handle	1	30
7	90 17 33 022 00-33	handle	1	30
8	09 30 30 124 90	screw	1	2
9	09 12 12 052 90	base	1	2
10	09 12 12 054 90	base	1	2
11	09 28 10 187 90	regulator	1	2
12	04 29 06 024 00-00	spindle	1	60
13	09 12 12 051-33	base	1	30
14	09 31 11 134 90	pin	1	2
15	09 11 02 243-33	plate	1	30
16	09 30 30 157 90	screw	4	2
17	09 30 01 296 90	disc	1	2
18	90 30 01 190 00 90	disc	1	2
19	09 23 01 124 90	sleeve	2	2
20	09 18 40 077 90	sleeve	2	2
21	09 24 04 257 90	nut	2	2
22	90 15 02 013 00 90	cartridge	1	2
23	09 28 10 188 90	regulator	1	2
24	09 28 10 189 90	regulator	1	2