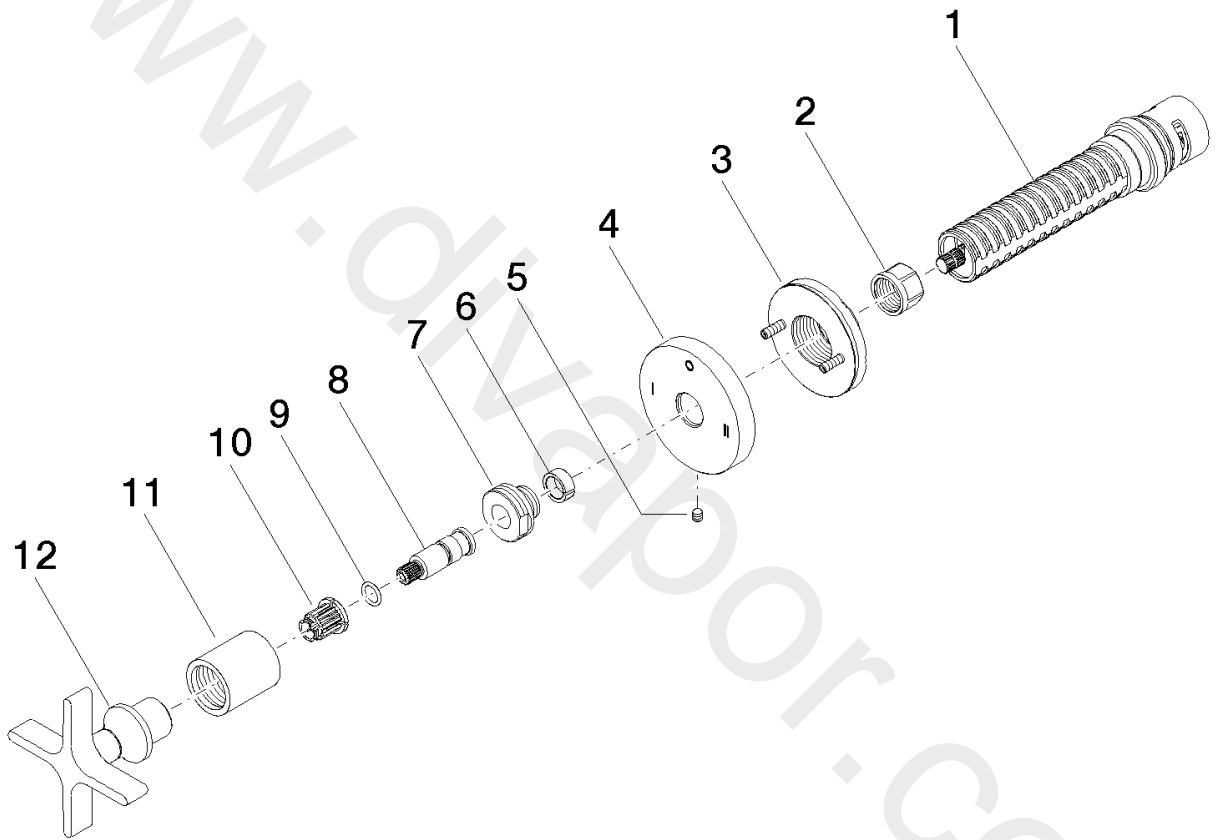


Bathtub - VAIA  
Wall mounted two-way diverter - Chrome  
Article number: 36 200 809-00 0010  
Date of manufacture from 4/1/2022





Bathtub - VAIA

Wall mounted two-way diverter - Chrome

Article number: 36 200 809-00 0010

Date of manufacture from 4/1/2022

## Spare parts list

Position	Number of units	Item Number	Spare part	Lead time
1	1	90 90 03 306 10 90	diverter	2
2	1	09 23 30 023 90	nut	2
3	1	90 21 02 181 00 90	disc	2
4	1	09 27 89 120-00	rosette	60
5	1	09 31 11 294 90	pin	2
6	1	09 14 15 020 90	ring	2
7	1	09 24 05 002 90	nipple	2
8	1	09 29 06 022 90	spindle	2
9	1	09 14 10 060 90	seal	2
10	1	90 12 12 002 00 90	fixing cap	2
11	1	09 21 02 070-00	cover	10
12	1	90 20 80 014 01-00	handle	10