

AXOR Citterio M

3-hole basin mixer for concealed installation wall-mounted with spout 166 mm, lever handles and escutcheons

Finish: **Chrome** Article Number: **34313000**



product features

- consists of: 3-hole basin mixer for concealed installation wall-mounted, waste set
- projection: 166 mm
- handle variant: lever handle
- spray type: normal spray
- maximum flow rate at 3 bar: 5 l/min
- ceramic valves hot/cold 90°
- suitable for continuous flow water heaters
- non-closing waste set
- connection type: basic set
- connection dimension: DN15
- WRAS 1811004
- WRAS 1811004 - Approval letter

Article Details

Price excl. VAT

483,33 £

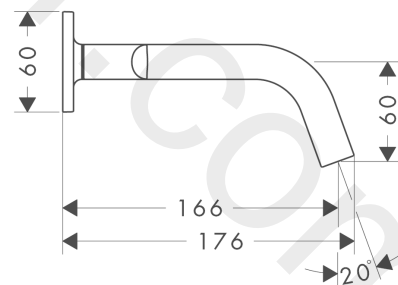
Technology



Product image



Scale drawing



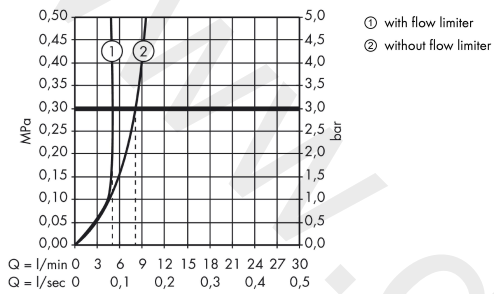
AXOR Citterio M

3-hole basin mixer for concealed installation wall-mounted with spout 166 mm, lever handles and escutcheons



Finish: **Chrome** Article Number: **34313000**

Flowchart



AXOR Citterio M

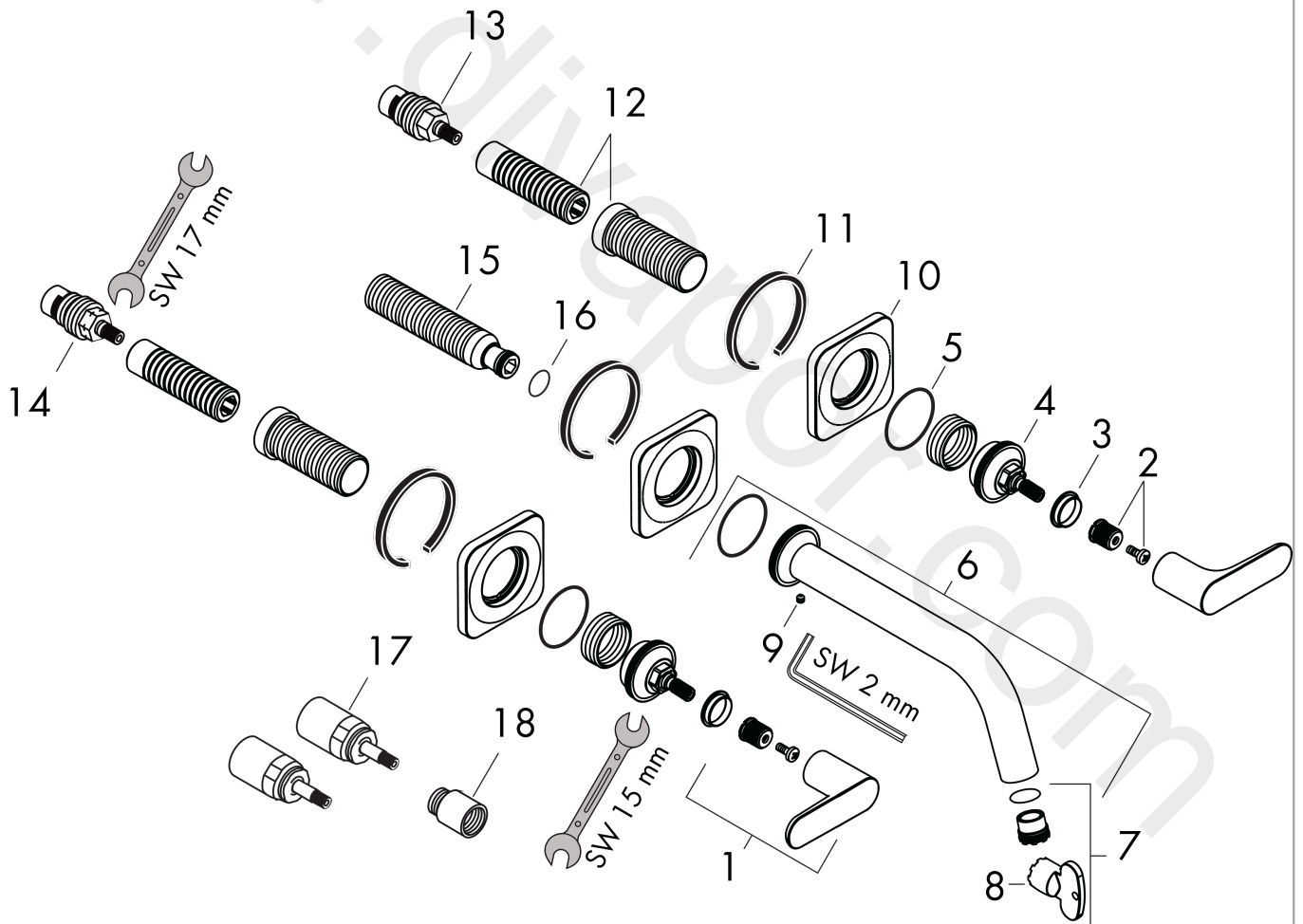
3-hole basin mixer for concealed installation wall-mounted with spout 166 mm, lever handles and escutcheons

Finish: **Chrome** Article Number: **34313000**



Exploded Drawing

Year of production: >01/10



AXOR Citterio M

3-hole basin mixer for concealed installation wall-mounted with spout 166 mm, lever handles and escutcheons



Finish: **Chrome** Article Number: **34313000**

Spare part list

Year of production: >01/10

| Pos. | | Article Number | Price | PU |
|------|-------------------------------------|----------------|----------|----|
| 1 | handle | 34095000 | £ 64,00 | 1 |
| 2 | handle fixing set | 98932000 | £ 16,10 | 1 |
| 3 | set of color-rings cold / hot water | 98927000 | £ 20,50 | 1 |
| 4 | nut | 98929000 | £ 64,00 | 1 |
| 5 | O-ring 30x1,5 | 98433000 | £ 3,30 | 1 |
| 6 | spout 165 mm | 98934000 | £ 173,00 | 1 |
| 7 | aerator cpl. | 93118000 | £ 25,00 | 1 |
| 8 | special tool | 98987000 | £ 9,00 | 1 |
| 9 | hollow set screw M4x5 | 92846000 | £ 13,30 | 1 |
| 10 | escutcheon | 98930000 | £ 64,00 | 1 |
| 11 | seal | 97530000 | £ 6,10 | 1 |
| 12 | fixing set | 96393000 | £ 35,00 | 1 |
| 13 | shut off unit right closing | 96350000 | £ 51,00 | 1 |
| 14 | shut off unit left closing | 96351000 | £ 51,00 | 1 |
| 15 | connecting thread G½ | 98933000 | £ 64,00 | 1 |
| 16 | O-ring 11x2 | 98127000 | £ 3,30 | 1 |
| 17 | extension 25 mm | 96259000 | £ 79,00 | 1 |
| 18 | extension 25 mm | 95413000 | £ 79,00 | 1 |
| a | waste | 50001000 | £ 71,00 | 1 |
| b | base body | 10303180 | £ 300,00 | 1 |