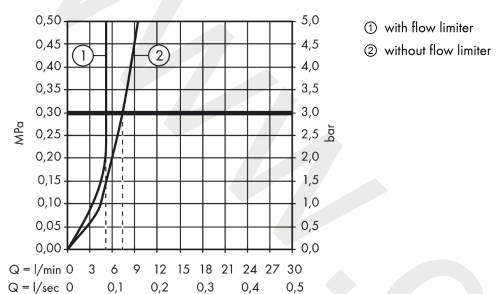




**AXOR Citterio M**  
**3-hole basin mixer 160 with lever handles, escutcheons and pop-up waste set**  
 Finish: **Chrome** Article Number: **34133000**



## Flowchart

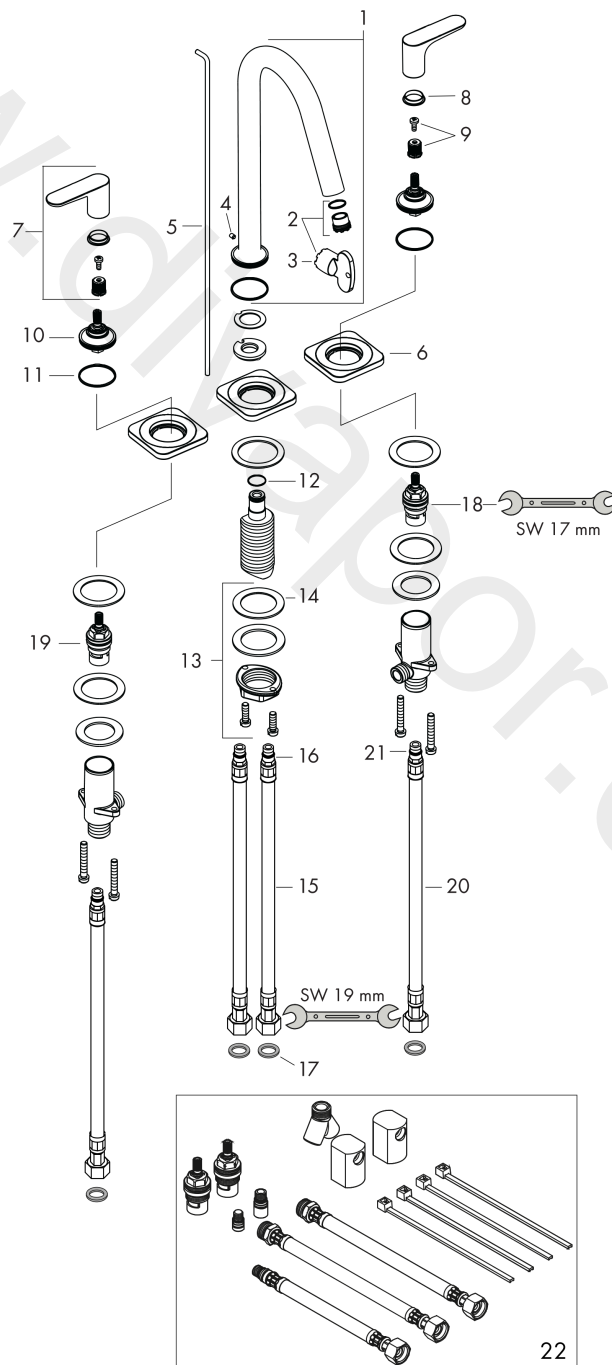


**AXOR Citterio M**  
**3-hole basin mixer 160 with lever handles, escutcheons and pop-up waste set**  
Finish: **Chrome** Article Number: **34133000**



## Exploded Drawing

Year of production: >10/10



## AXOR Citterio M

**3-hole basin mixer 160 with lever handles, escutcheons and pop-up waste set**

Finish: **Chrome** Article Number: **34133000**



### Spare part list

Year of production: >10/10

| Pos. |   | Article Number | Price    | PU |
|------|---|----------------|----------|----|
| 1    | spout cpl.                                | 98928000       | £ 445,00 | 1  |
| 2    | aerator cpl.                              | 93118000       | £ 25,00  | 1  |
| 3    | special tool                              | 98987000       | £ 9,00   | 1  |
| 4    | hollow set screw M4x5                     | 92846000       | £ 13,30  | 1  |
| 5    | pull rod                                  | 95701000       | £ 43,00  | 1  |
| 6    | escutcheon                                | 98930000       | £ 64,00  | 1  |
| 7    | handle                                    | 34095000       | £ 64,00  | 1  |
| 8    | set of color-rings cold / hot water       | 98927000       | £ 20,50  | 1  |
| 9    | handle fixing set                         | 98932000       | £ 16,10  | 1  |
| 10   | nut                                       | 98929000       | £ 64,00  | 1  |
| 11   | O-ring 30x1,5                             | 98433000       | £ 3,30   | 1  |
| 12   | O-ring 11x2                               | 98127000       | £ 3,30   | 1  |
| 13   | fixing set (Ø 32)                         | 13961000       | £ 25,00  | 1  |
| 14   | lever collar                              | 97548000       | £ 3,30   | 1  |
| 15   | connection hose 450 mm M8x0,75 G3/8       | 97206000       | £ 35,00  | 1  |
| 16   | O-ring 7x1,5                              | 98422000       | £ 3,30   | 1  |
| 17   | sealing set                               | 95581000       | £ 6,10   | 1  |
| 18   | shut off unit left closing                | 94008000       | £ 43,00  | 1  |
| 19   | shut off unit right closing               | 94009000       | £ 43,00  | 1  |
| 20   | connection hose 450 mm M10x1 G3/8         | 96507000       | £ 43,00  | 1  |
| 21   | O-ring 8x1,75                             | 97827000       | £ 3,30   | 1  |
| 22   | Hose extension set for 3-Hole Basin Mixer | 38959000       | £ 147,00 | 1  |
| a    | pop up waste                              | 94139000       | £ 96,00  | 1  |
| b    | fixation extension 35 mm                  | 13898000       | £ 79,00  | 1  |